

# MTRI Developmental Harmful and Nuisance Algal Bloom Map

**MichiganTech**  
Research Institute  
[www.mtri.org](http://www.mtri.org)

great lakes  
observing system

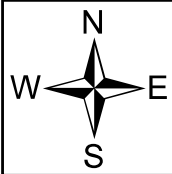
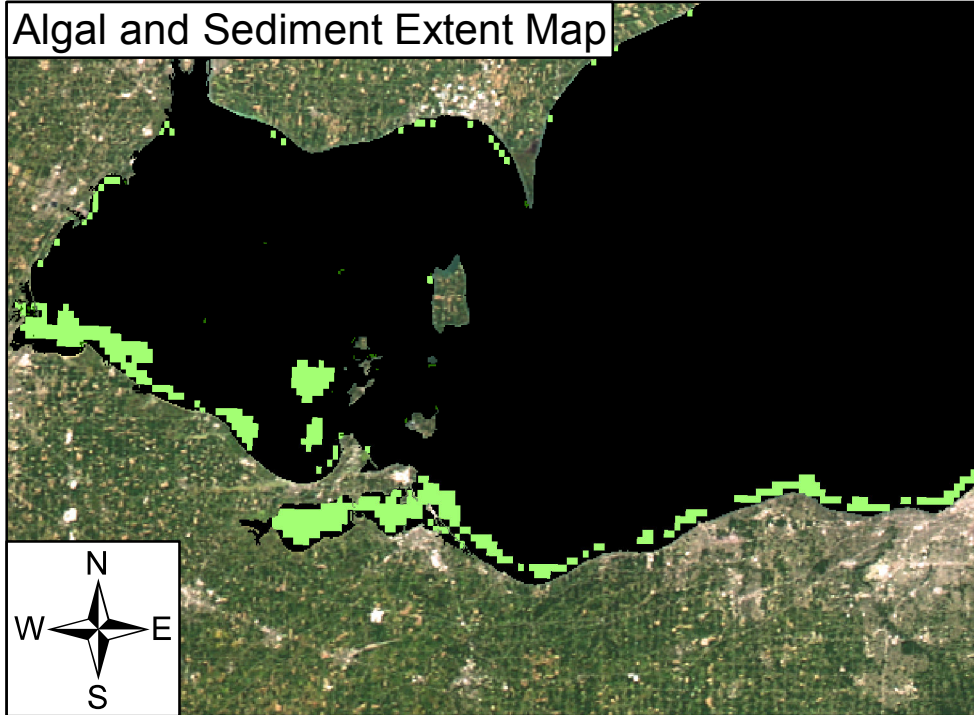


October 14, 2018  
Lake Erie

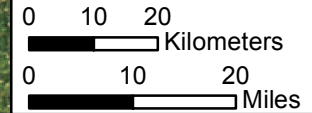
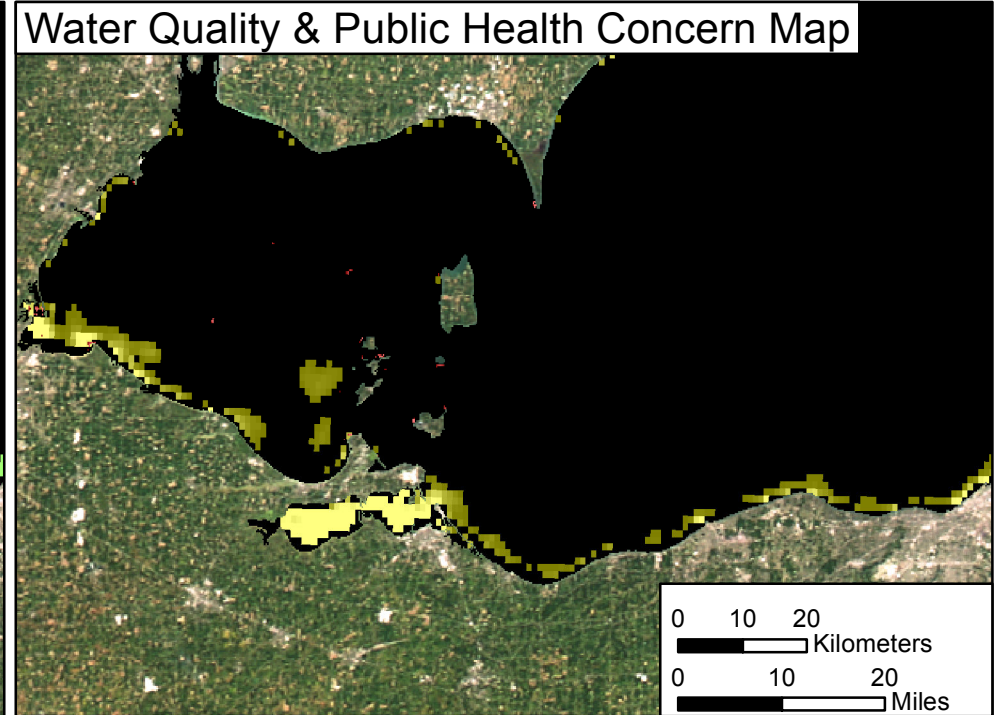
GLERL

Great Lakes  
RESTORATION

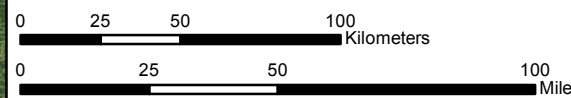
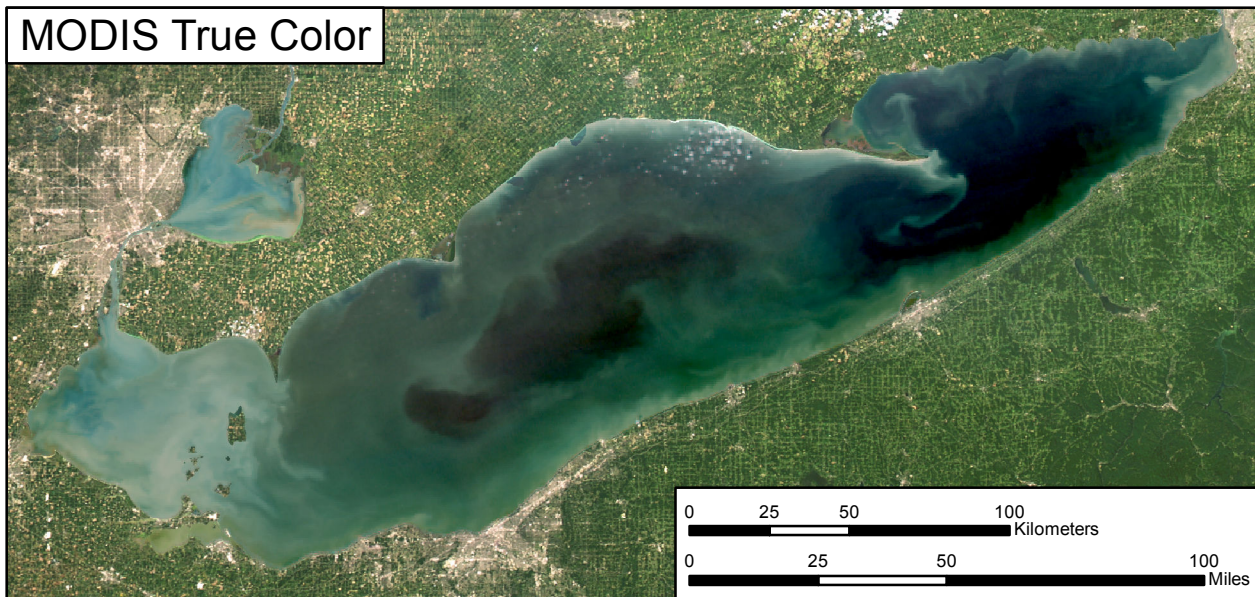
Algal and Sediment Extent Map









Water Quality & Public Health Concern Map



MODIS True Color



**Area**

	Surface Algal Mat Area:	4.75 Sq Km.
	High Algal Concentration Area:	222.82 Sq Km.
	Higher Concern Possible HAB Related Public Health Concern: (microcystin assumed > 20 µg/L based on surface scum analysis and historical observations, Water Temp > 18°C)	
	Lower Concern Detected Area:	4.75 Sq Km.
	Higher Concern Possible HAB Related Water Quality Concern: (Chlorophyll > 20 µg/L, Water Temp > 18°C)	
	Lower Concern Detected Area:	222.82 Sq Km.