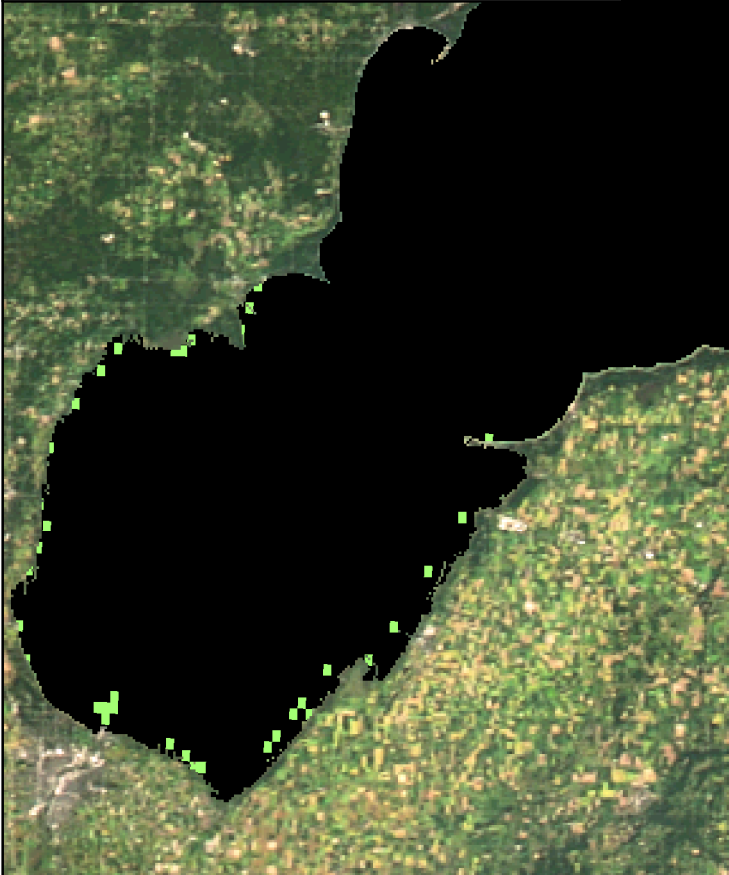
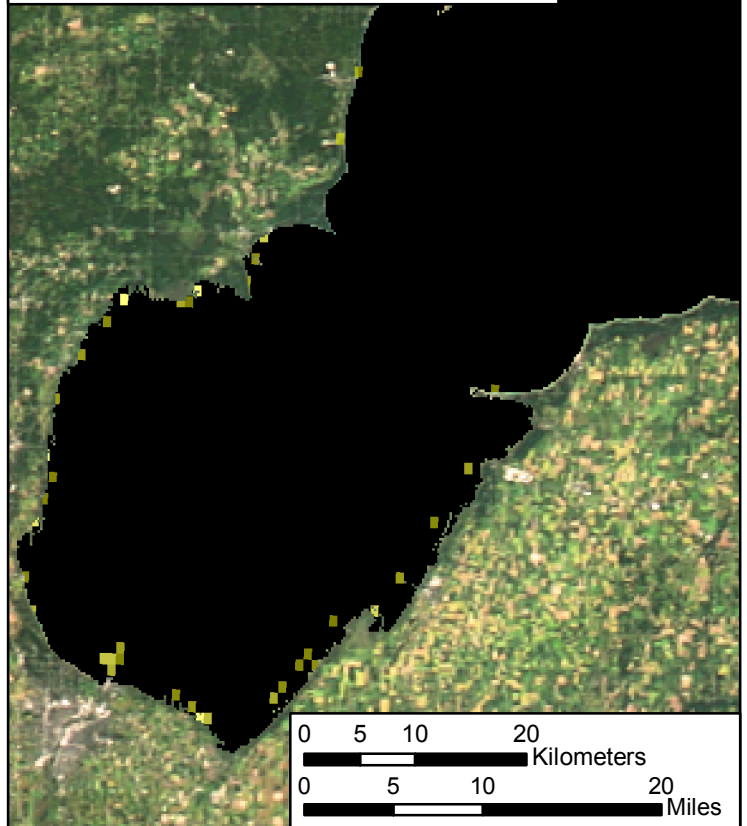


MTRI Developmental Harmful and Nuisance Algal Bloom Map

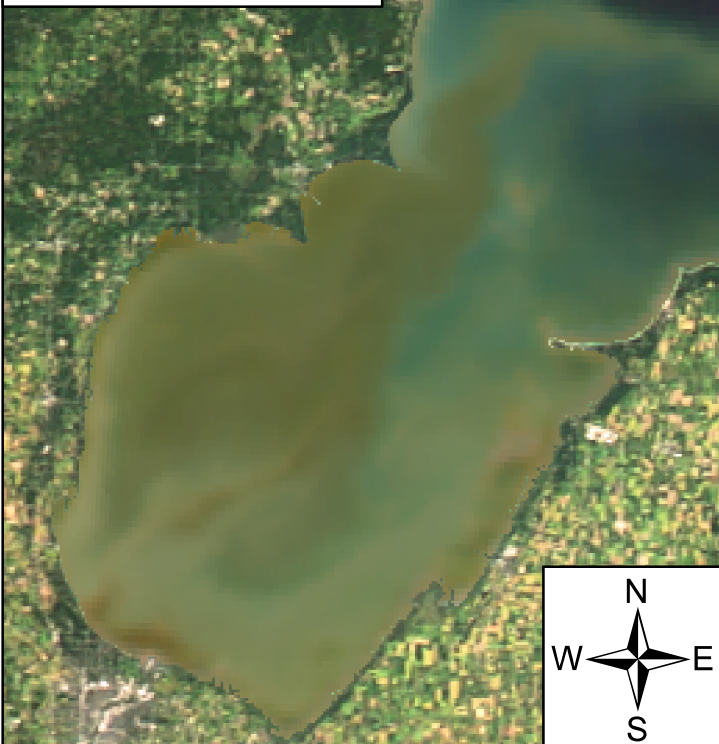
Algal and Sediment Extent Map




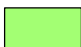


Water Quality & Public Health Concern Map



MODIS True Color



Area

| | | |
|---|--|---------------|
|  | Surface Algal Mat | N/A Sq Km. |
|  | High Algal Concentration: (Chlorophyll > 20 µg/L) | 34.38 Sq. Km. |
|  | Higher Concern Possible HAB Related Public Health Concern: (microcystin assumed > 20 µg/L based on surface scum analysis and historical observations Water Temp > 18°C) | |
| | Lower Concern Detected Area: | N/A Sq Km. |
|  | Higher Concern Possible HAB Related Water Quality Concern: (Chlorophyll > 20 µg/L Water Temp > 18°C) | |
| | Lower Concern Detected Area: | 34.38 Sq. Km. |