

MTRI Developmental Harmful and Nuisance Algal Bloom Map

MichiganTech
Research Institute
www.mtri.org

great lakes
observing system

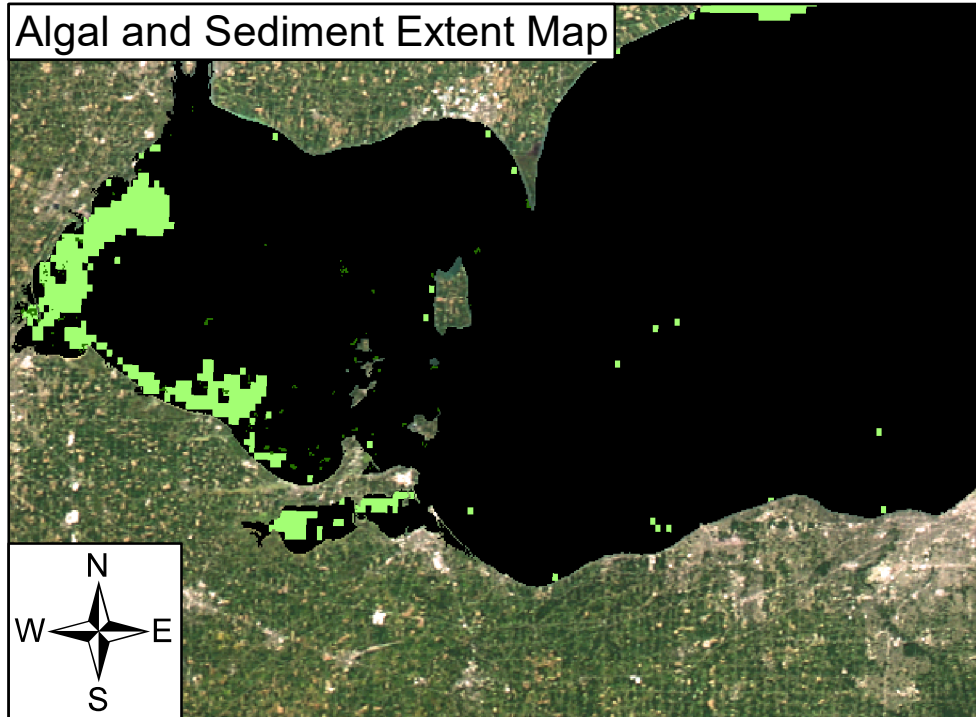


September 5, 2018
Lake Erie

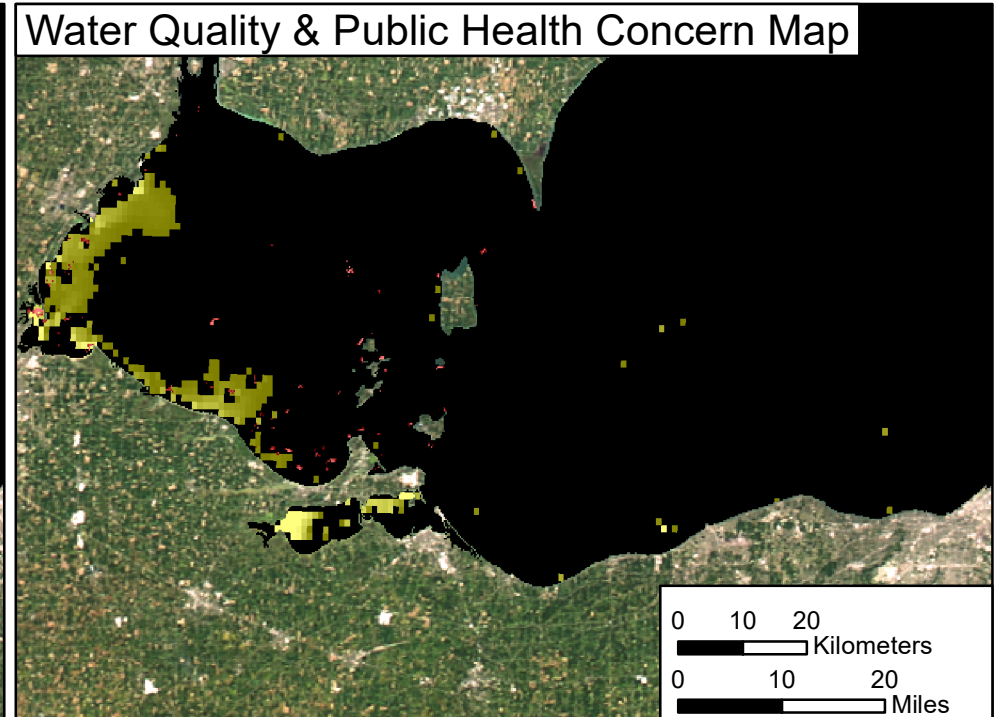
GLERL

Great Lakes
RESTORATION

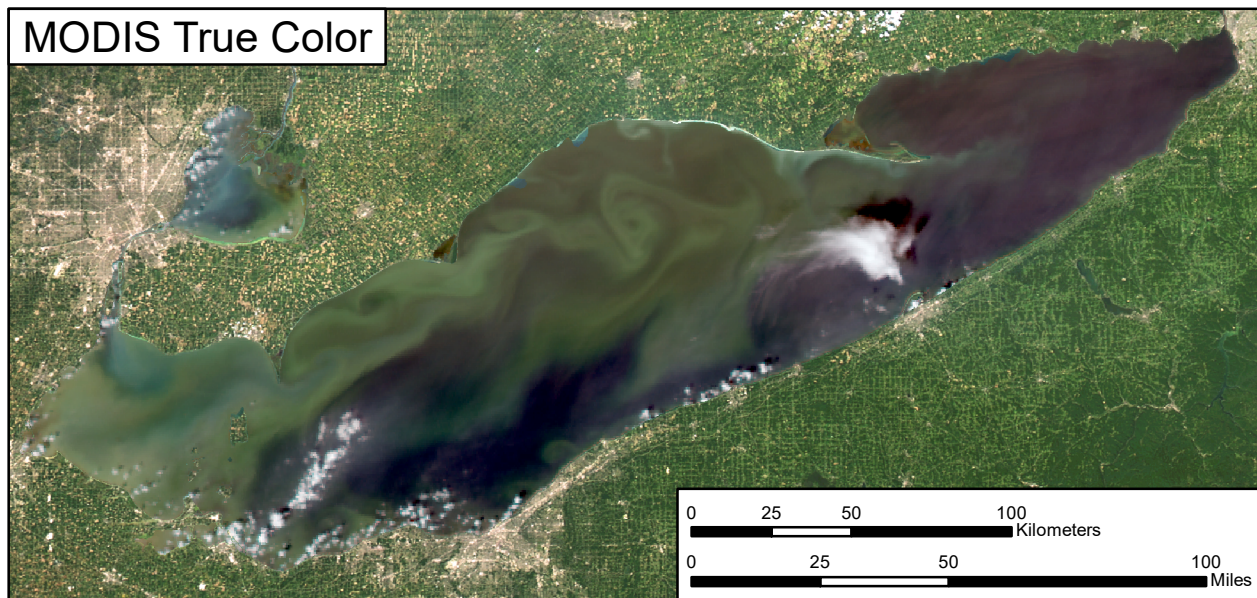
Algal and Sediment Extent Map









Water Quality & Public Health Concern Map



MODIS True Color



Area

	Surface Algal Mat Area:	17.69 Sq Km.
	High Algal Concentration Area:	356.44 Sq Km.
	Higher Concern	Possible HAB Related Public Health Concern: (microcystin assumed > 20 µg/L based on surface scum analysis and historical observations, Water Temp > 18°C)
	Lower Concern	Detected Area: 17.69 Sq Km.
	Higher Concern	Possible HAB Related Water Quality Concern: (Chlorophyll > 20 µg/L, Water Temp > 18°C)
	Lower Concern	Detected Area: 356.44 Sq Km.