

# MTRI Developmental Harmful and Nuisance Algal Bloom Map

**MichiganTech**  
 Research Institute  
[www.mtri.org](http://www.mtri.org)

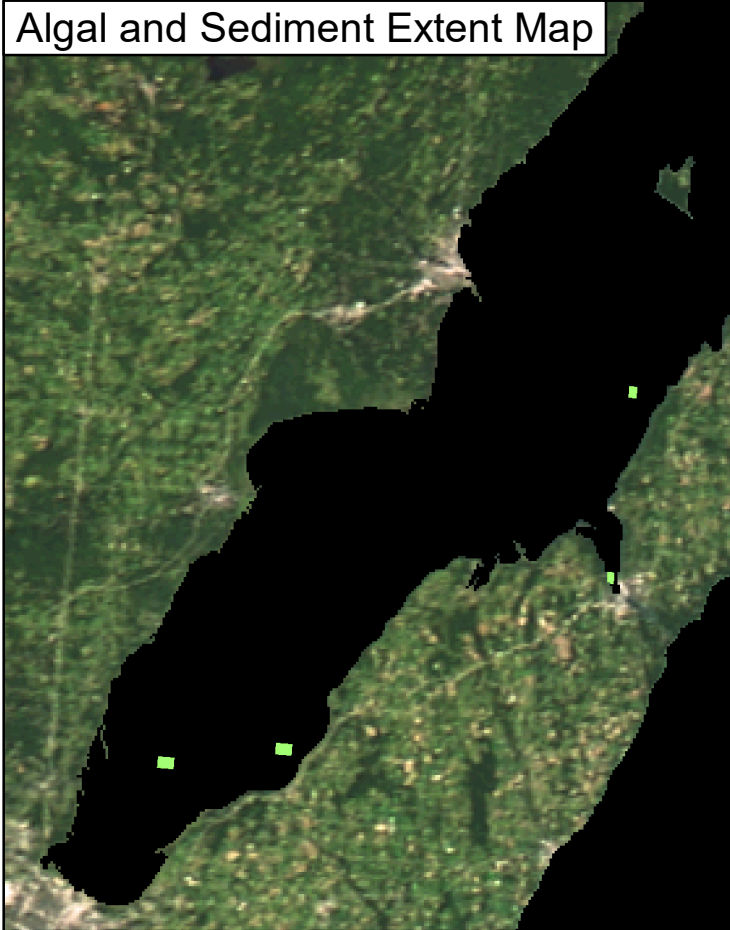
great lakes  
 observing system



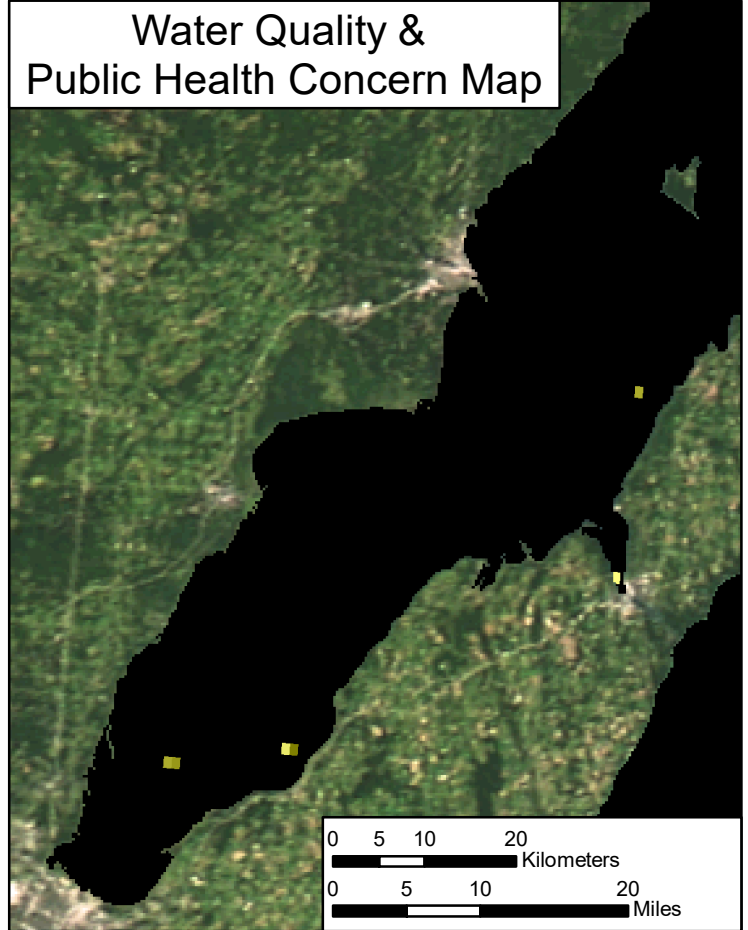
Green Bay  
 August 30, 2018



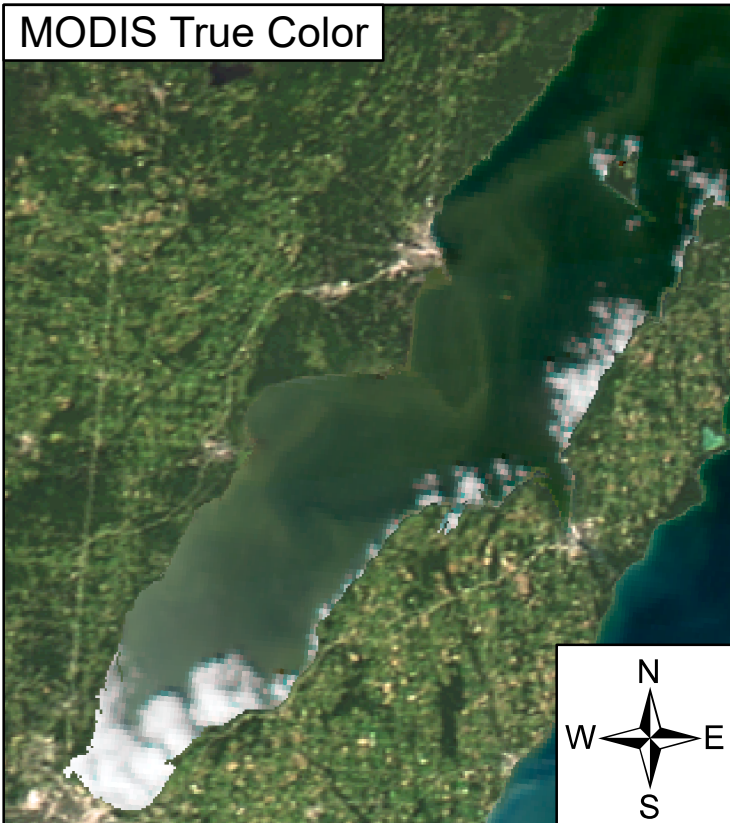
Algal and Sediment Extent Map





Water Quality & Public Health Concern Map







MODIS True Color



## Area

-  Surface Algal Mat      N/A Sq. Km.
-  High Algal Concentration:      6.63 Sq. Km.  
 (Chlorophyll > 20 µg/L)

-  Higher Concern      Possible HAB Related Public Health Concern: (microcystin assumed > 20 µg/L based on surface scum analysis and historical observations Water Temp > 18°C)
-  Lower Concern      Detected Area:      N/A Sq. Km.

-  Higher Concern      Possible HAB Related Water Quality Concern: (Chlorophyll > 20 µg/L Water Temp > 18°C)
-  Lower Concern      Detected Area:      6.63 Sq. Km.