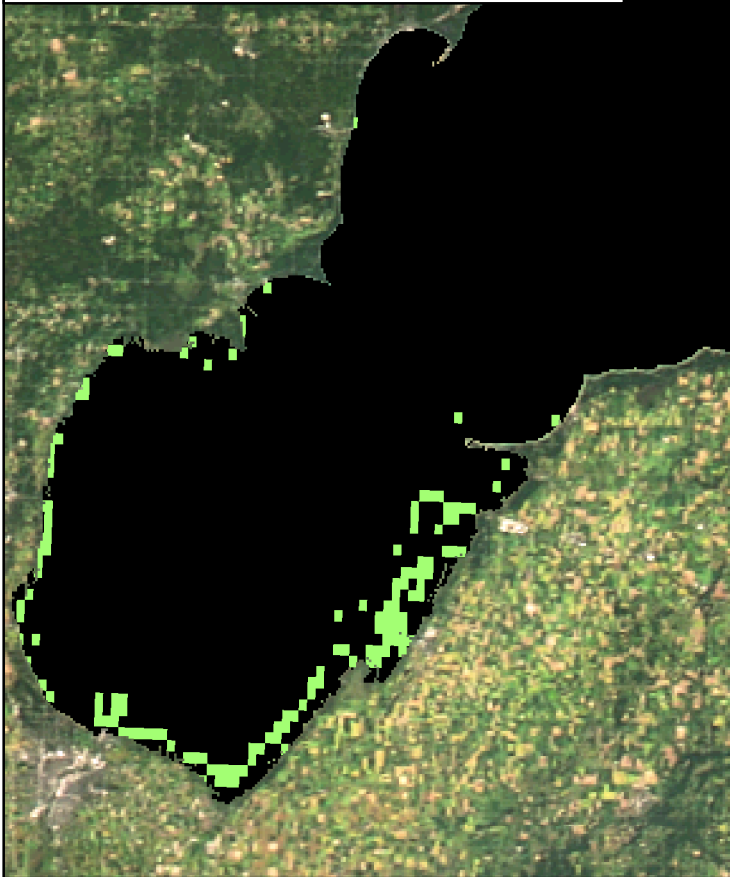
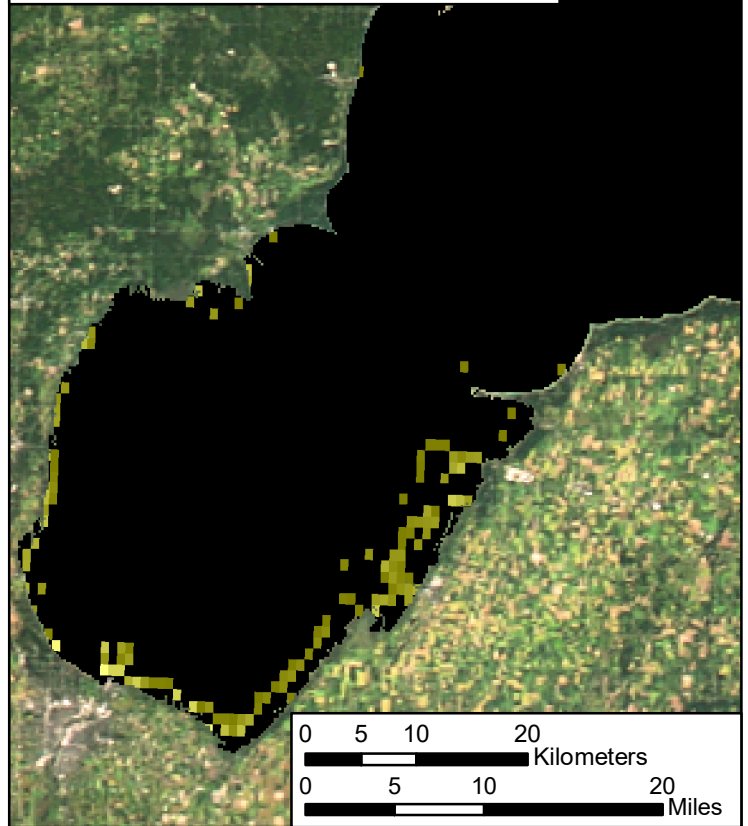


MTRI Developmental Harmful and Nuisance Algal Bloom Map

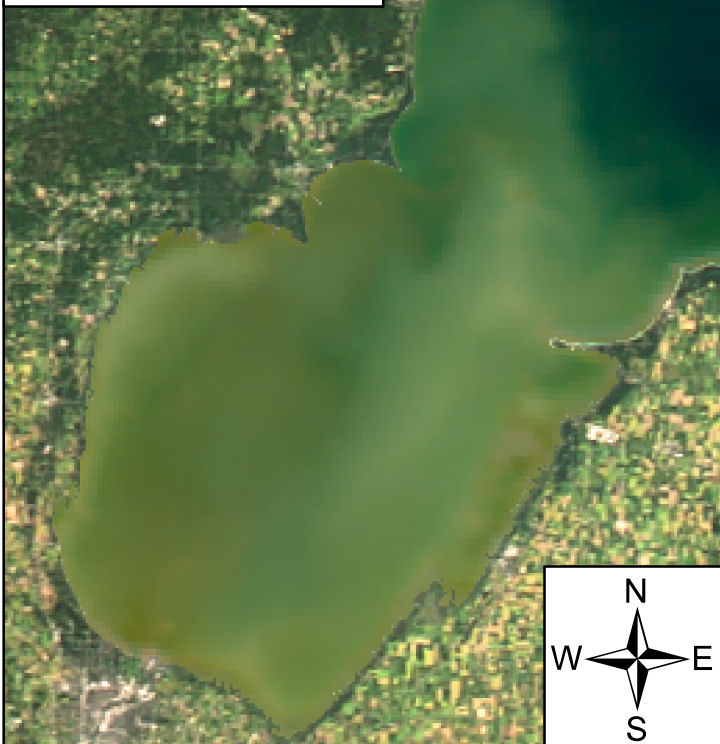
Algal and Sediment Extent Map







Water Quality & Public Health Concern Map



MODIS True Color



Area

	Surface Algal Mat	N/A Sq Km.
	High Algal Concentration: (Chlorophyll > 20 µg/L)	136.44 Sq. Km.
	Higher Concern Possible HAB Related Public Health Concern: (microcystin assumed > 20 µg/L based on surface scum analysis and historical observations Water Temp > 18°C)	
	Lower Concern Detected Area:	N/A Sq Km.
	Higher Concern Possible HAB Related Water Quality Concern: (Chlorophyll > 20 µg/L Water Temp > 18°C)	
	Lower Concern Detected Area:	136.44 Sq. Km.