

MTRI Developmental Harmful and Nuisance Algal Bloom Map

MichiganTech
 Research Institute
www.mtri.org

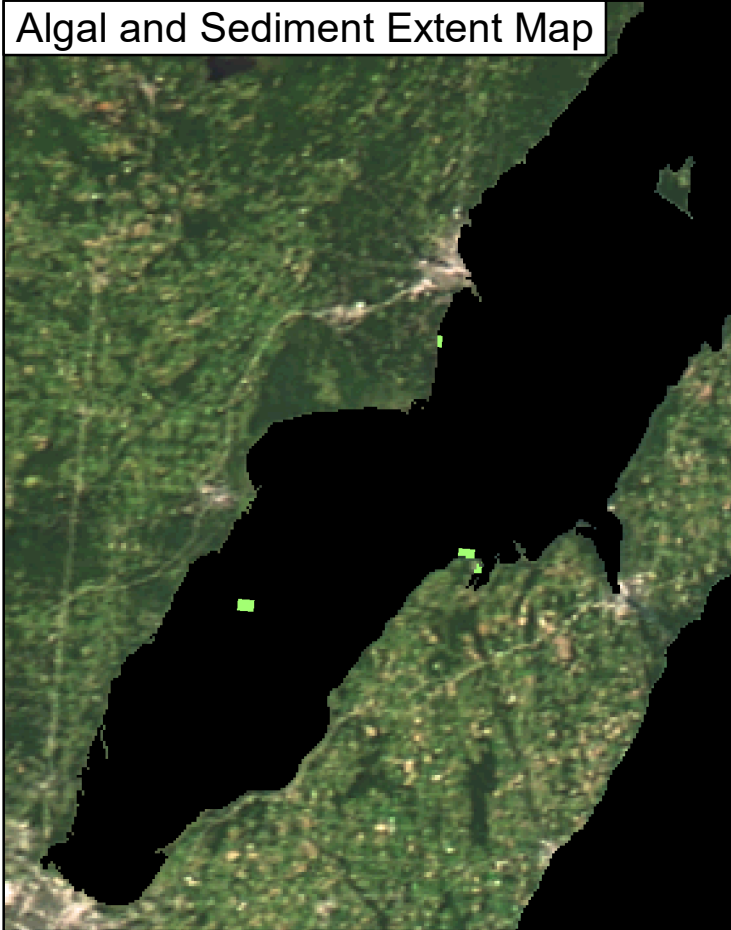
great lakes
 observing system



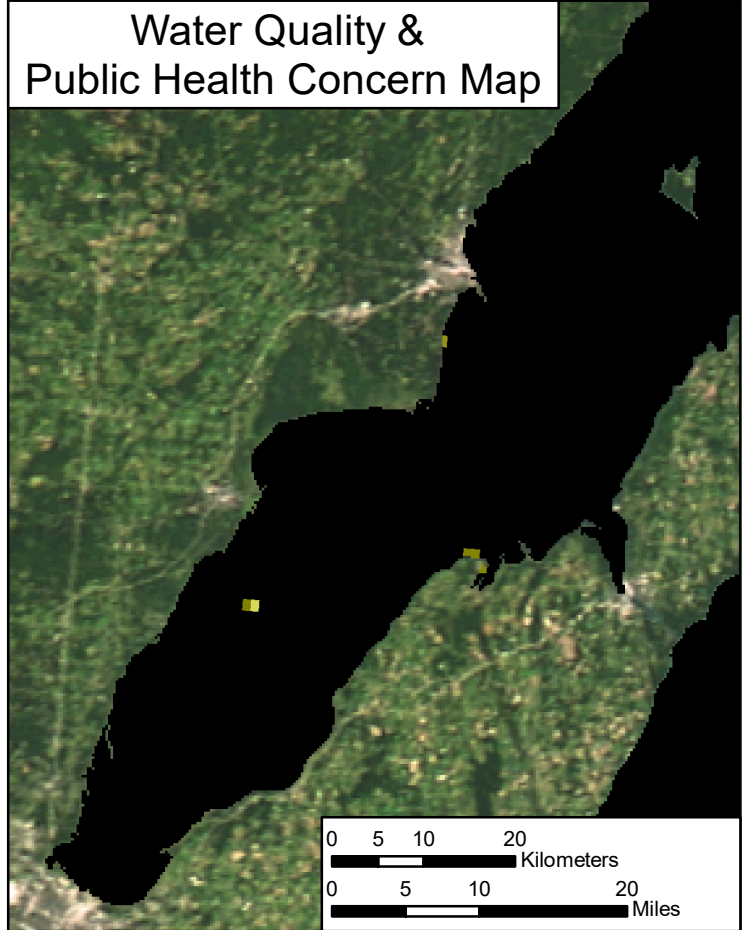
Green Bay
 July 29, 2018



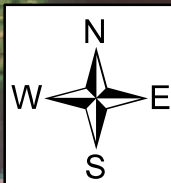
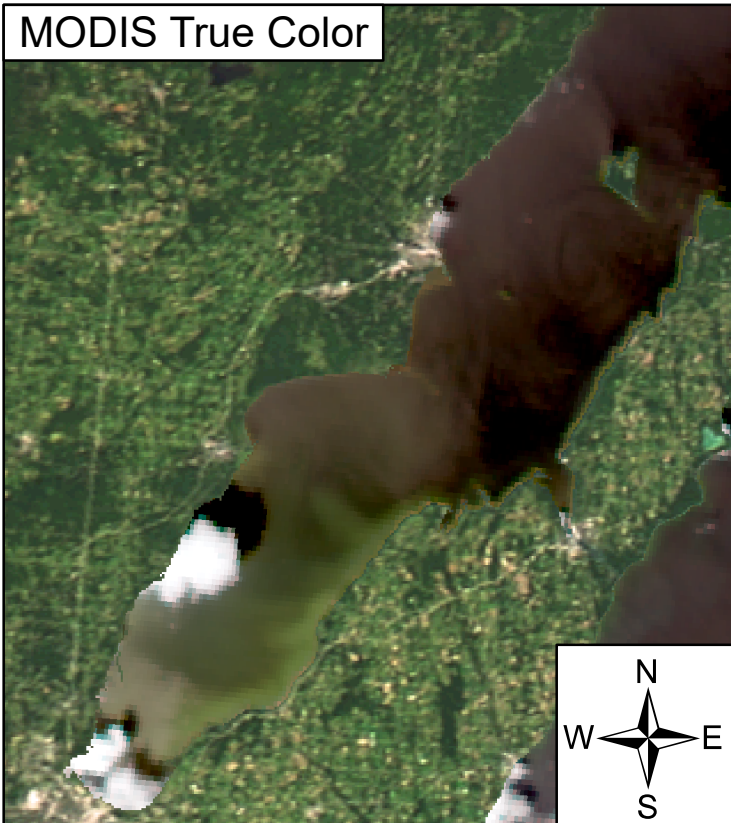
Algal and Sediment Extent Map






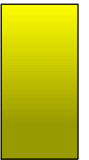
Water Quality & Public Health Concern Map



MODIS True Color



Area

	Surface Algal Mat	N/A Sq. Km.
	High Algal Concentration: (Chlorophyll > 20 µg/L)	7.38 Sq. Km.
	Higher Concern Possible HAB Related Public Health Concern: (microcystin assumed > 20 µg/L based on surface scum analysis and historical observations Water Temp > 18°C)	
	Lower Concern Detected Area:	N/A Sq. Km.
	Higher Concern Possible HAB Related Water Quality Concern: (Chlorophyll > 20 µg/L Water Temp > 18°C)	
	Lower Concern Detected Area:	7.38 Sq. Km.