

MTRI Developmental Harmful and Nuisance Algal Bloom Map

MichiganTech
 Research Institute
www.mtri.org

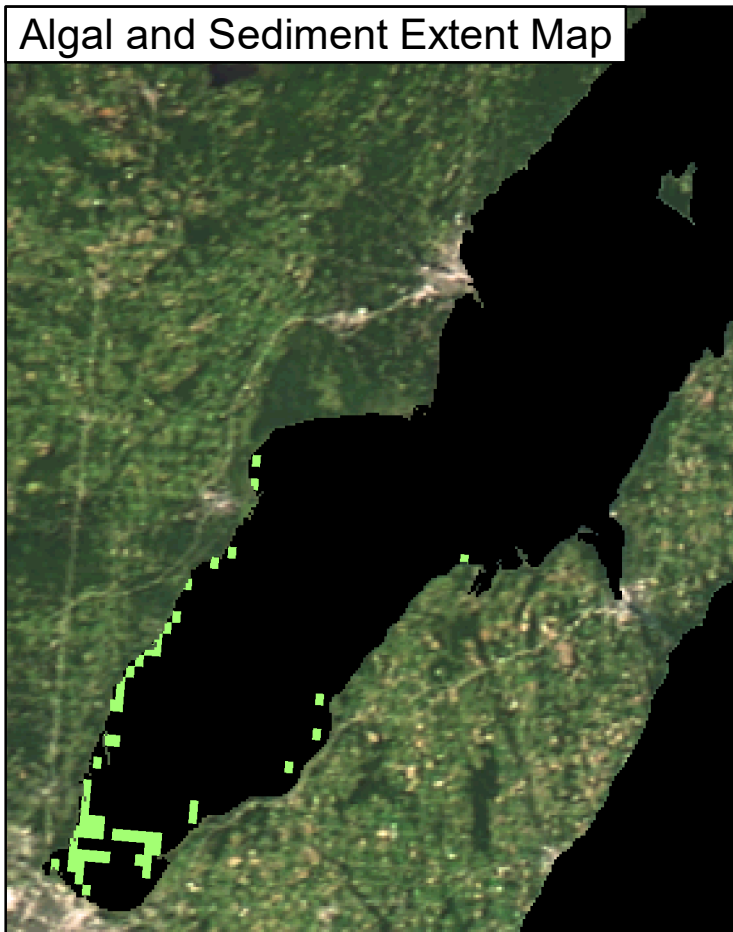
 **great lakes**
 observing system



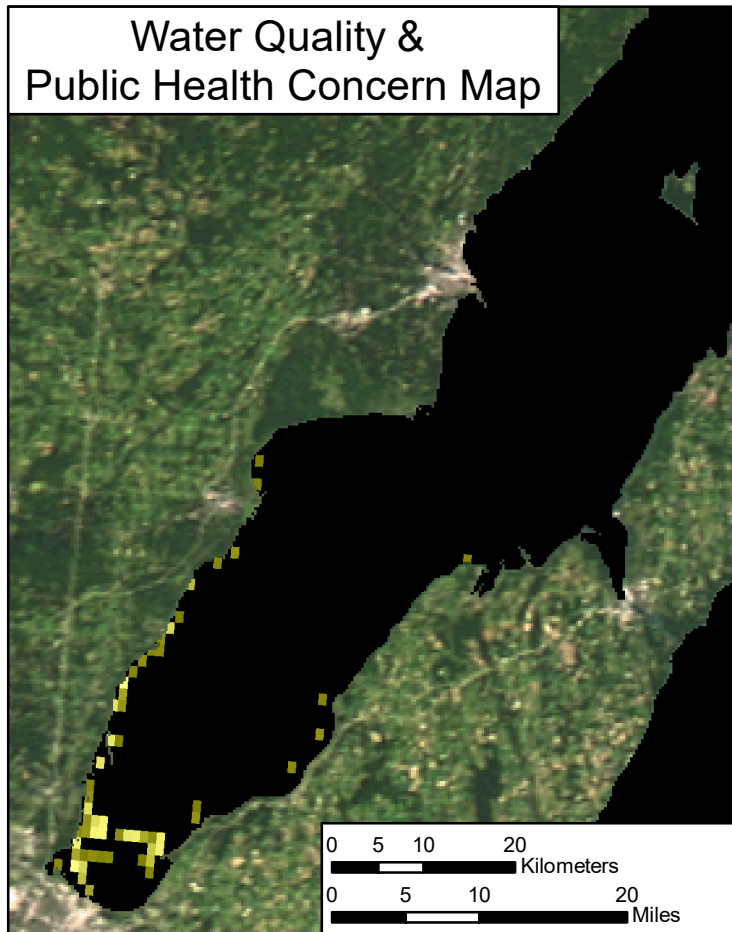
Green Bay
 June 23, 2018



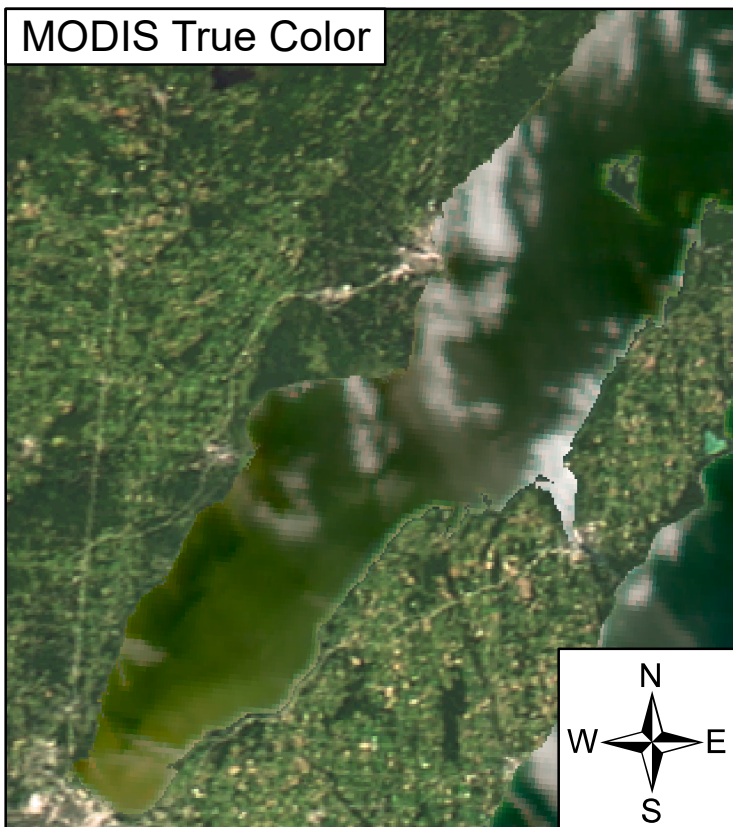
Algal and Sediment Extent Map



Water Quality & Public Health Concern Map





MODIS True Color





Area

 Surface Algal Mat N/A Sq. Km.

 High Algal Concentration: 55.5 Sq. Km.
 (Chlorophyll > 20 µg/L)

 Higher Concern Possible HAB Related Public Health
 Concern: (microcystin assumed
 > 20 µg/L based on surface scum
 analysis and historical observations
 Water Temp > 18°C)

 Lower Concern Detected Area: N/A Sq. Km.

 Higher Concern Possible HAB Related Water Quality
 Concern: (Chlorophyll > 20 µg/L
 Water Temp > 18°C)

 Lower Concern Detected Area: 55.5 Sq. Km.