

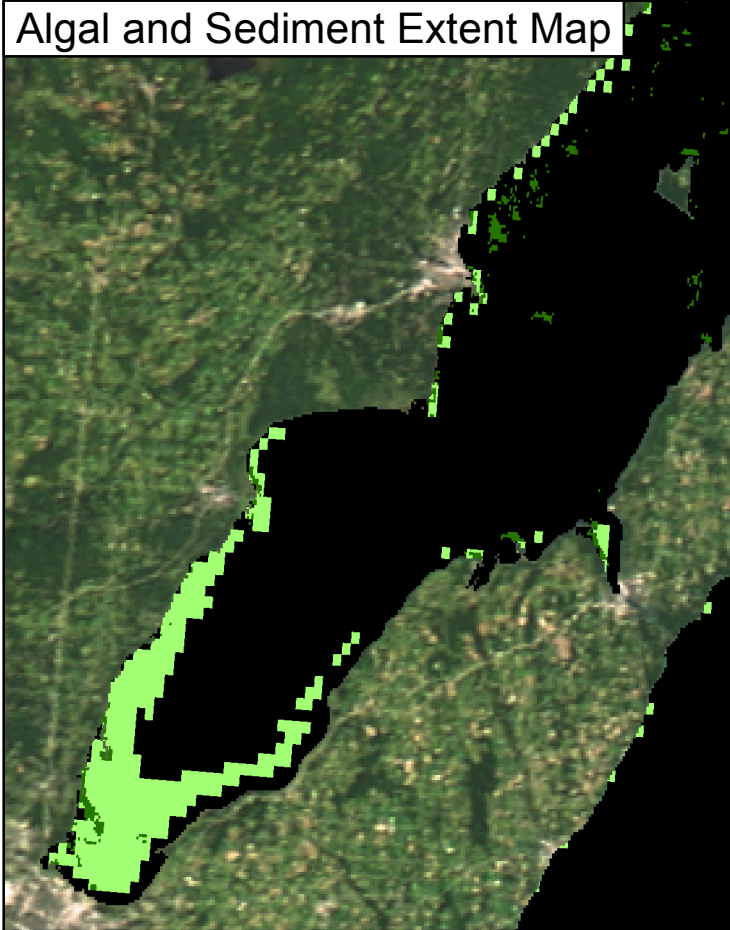
# MTRI Developmental Harmful and Nuisance Algal Bloom Map



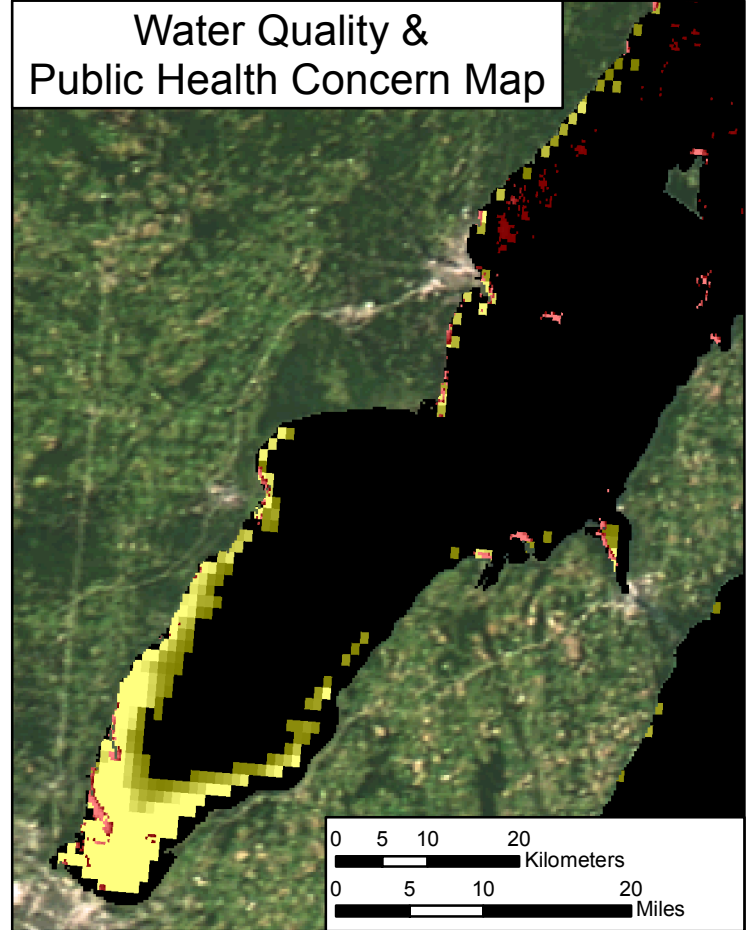
Green Bay  
September 23, 2014



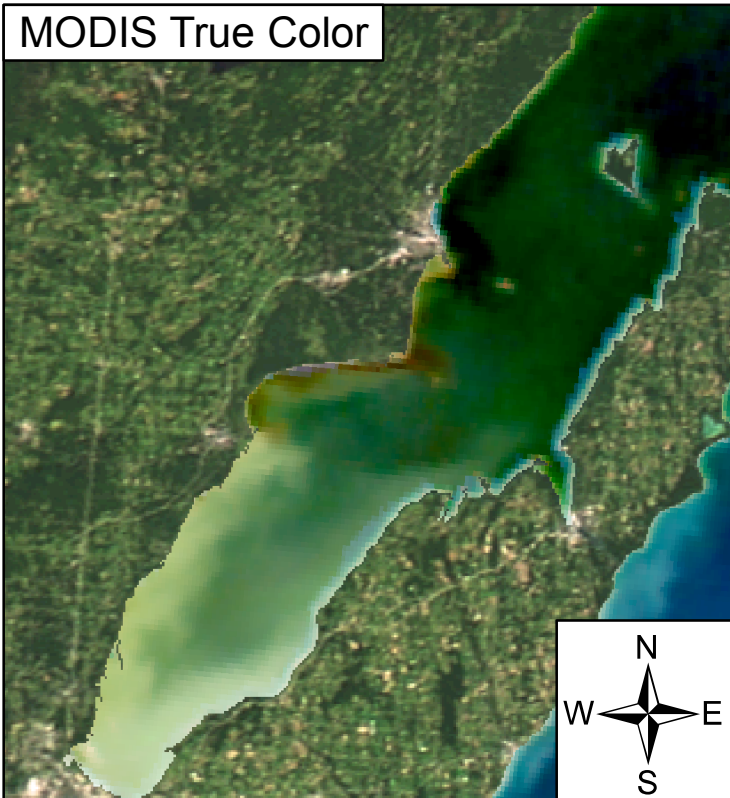
Algal and Sediment Extent Map






Water Quality & Public Health Concern Map







MODIS True Color



## Area

	Surface Algal Mat	165.25 Sq. Km.
	High Algal Concentration: (Chlorophyll > 20 µg/L)	276.88 Sq. Km.
	Heavy Sediment Plume	N/A Sq. Km.

	Higher Concern	Possible HAB Related Public Health Concern: (microcystin assumed > 20 µg/L based on surface scum analysis and historical observations Water Temp > 18°C)
	Lower Concern	Detected Area: 165.25 Sq Km.

	Higher Concern	Possible HAB Related Water Quality Concern: (Chlorophyll > 20 µg/L Water Temp > 18°C)
	Lower Concern	Detected Area: 276.88 Sq Km.