

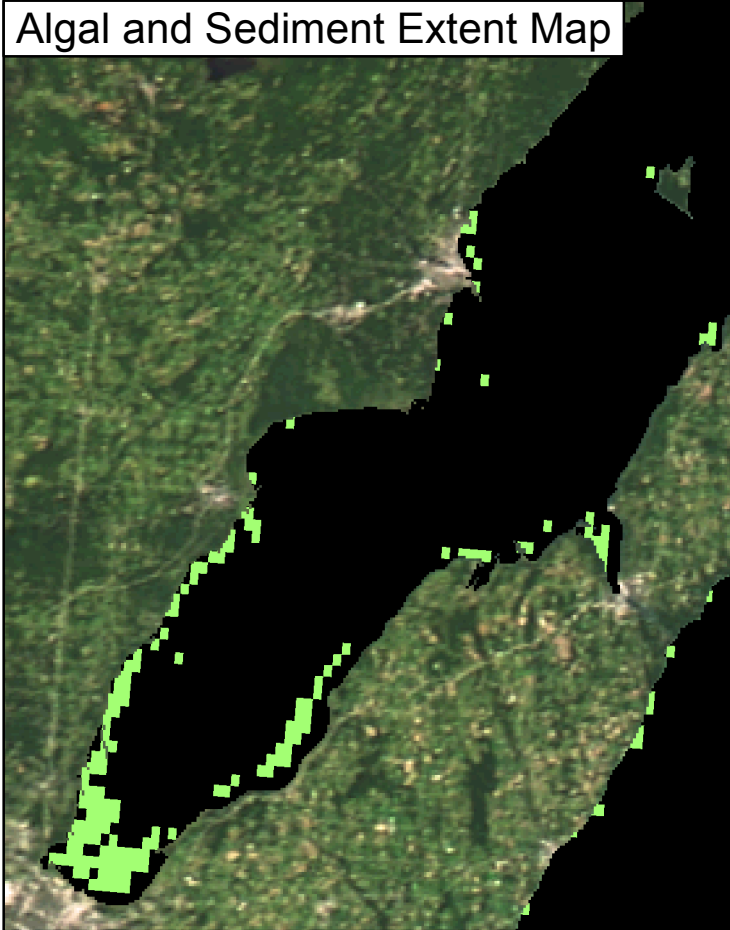
MTRI Developmental Harmful and Nuisance Algal Bloom Map



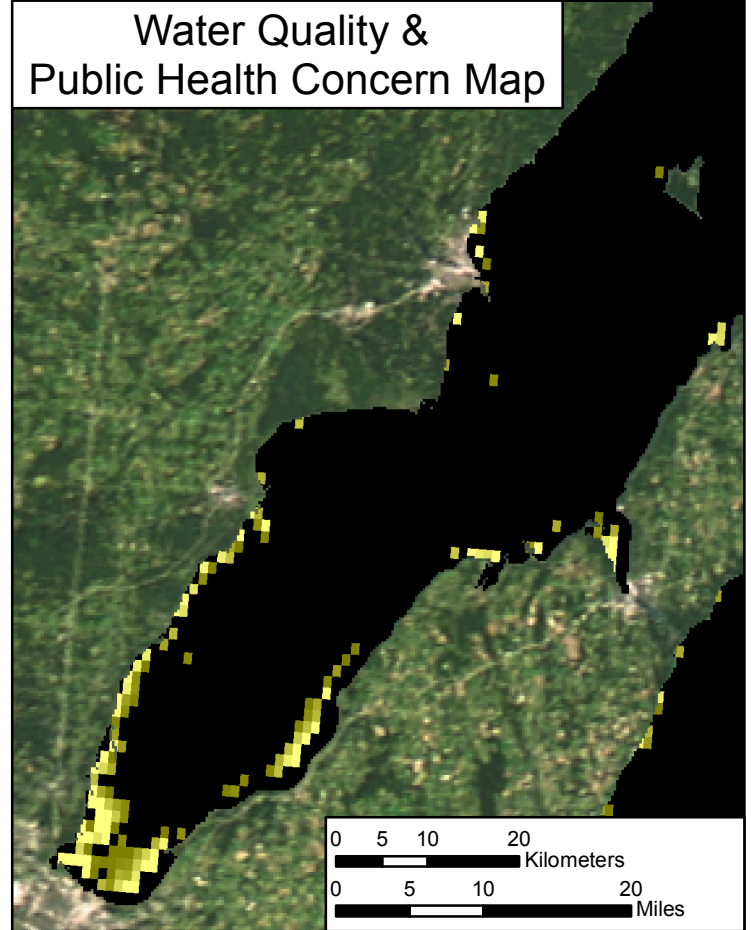
Green Bay
October 9, 2014



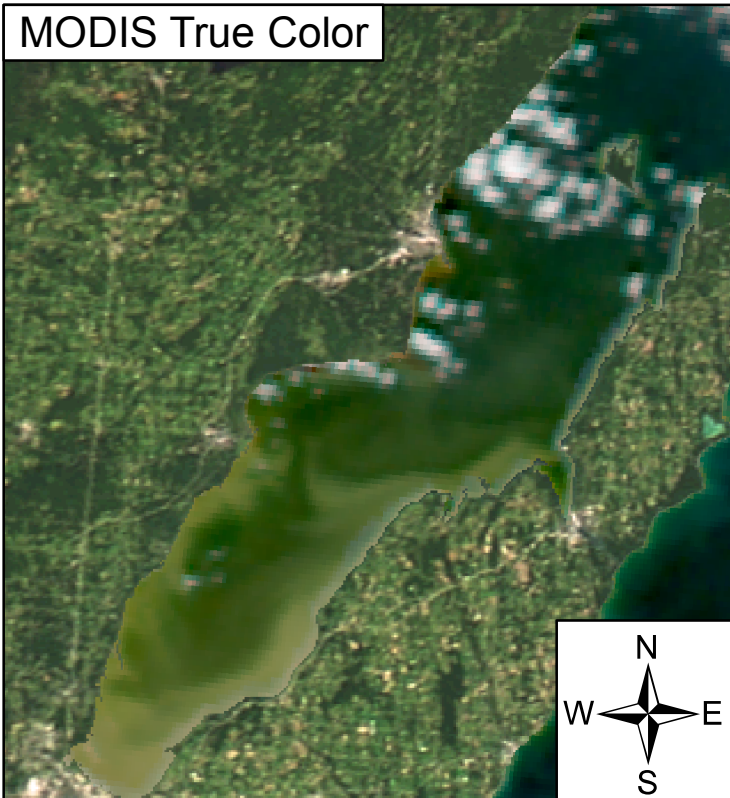
Algal and Sediment Extent Map






Water Quality & Public Health Concern Map







MODIS True Color



Area

| | | |
|---|--|----------------|
|  | Surface Algal Mat | N/A Sq. Km. |
|  | High Algal Concentration: (Chlorophyll > 20 µg/L) | 123.63 Sq. Km. |
|  | Heavy Sediment Plume | N/A Sq. Km. |

| | | | |
|---|----------------|--|------------|
|  | Higher Concern | Possible HAB Related Public Health Concern: (microcystin assumed > 20 µg/L based on surface scum analysis and historical observations Water Temp > 18°C) | |
|  | Lower Concern | Detected Area: | N/A Sq Km. |

| | | | |
|---|----------------|---|---------------|
|  | Higher Concern | Possible HAB Related Water Quality Concern: (Chlorophyll > 20 µg/L Water Temp > 18°C) | |
|  | Lower Concern | Detected Area: | 123.63 Sq Km. |