

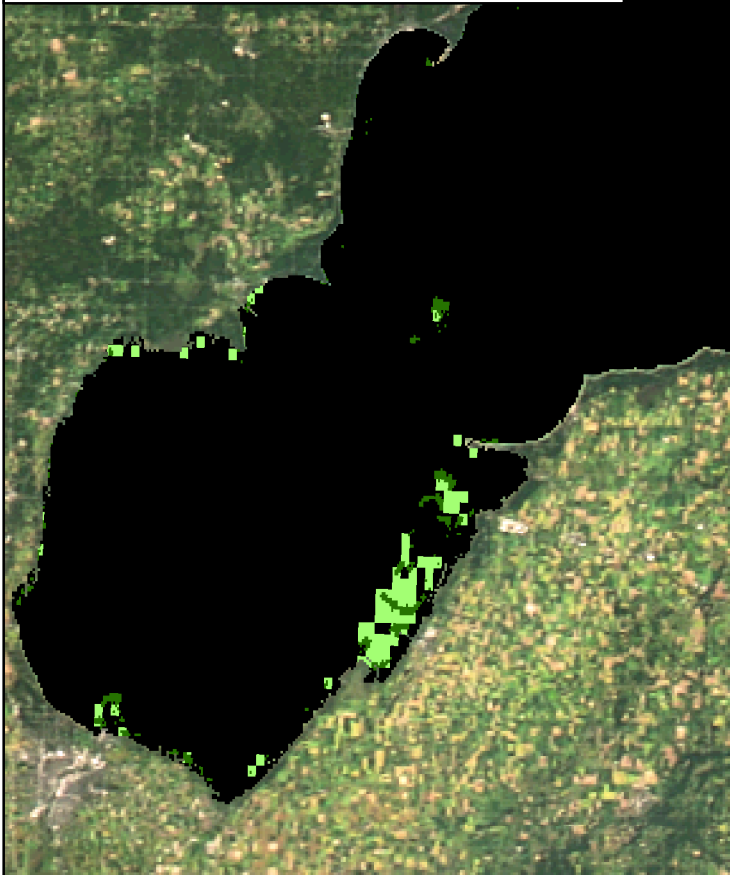
MTRI Developmental Harmful and Nuisance Algal Bloom Map



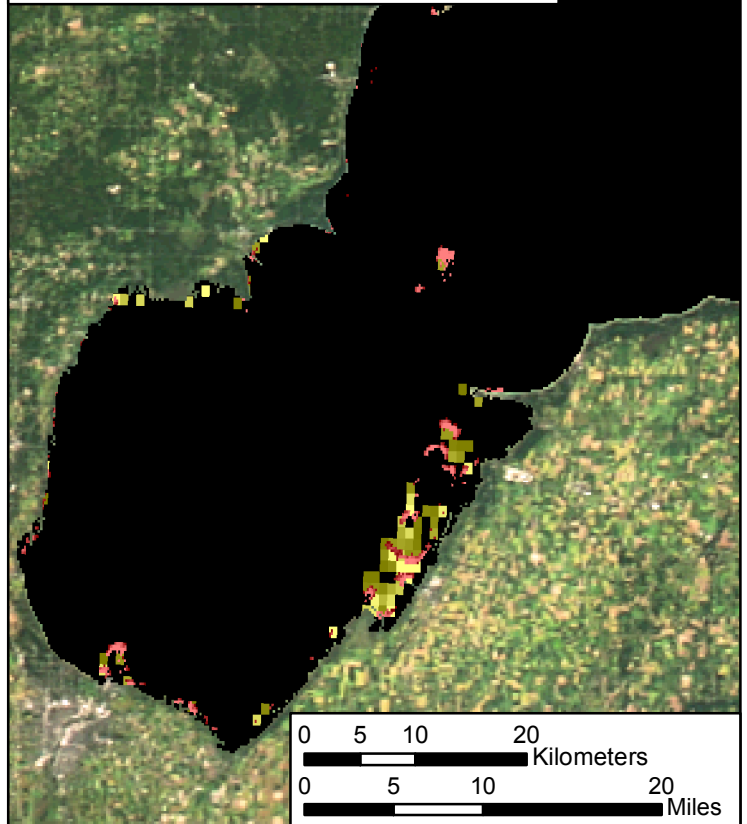
Saginaw Bay
September 26, 2014



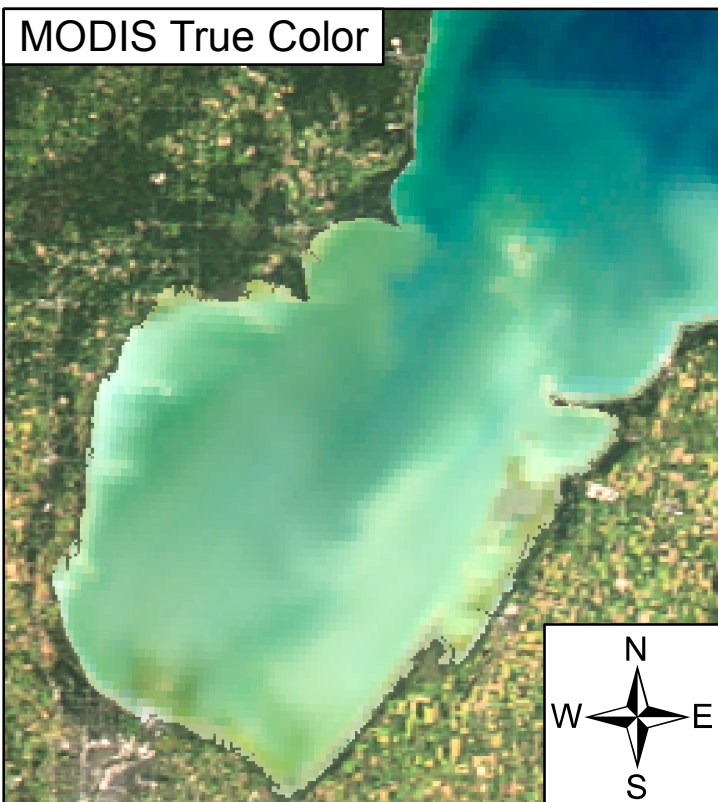
Algal and Sediment Extent Map






Water Quality & Public Health Concern Map






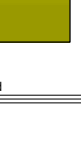
MODIS True Color



Area

	Surface Algal Mat	33.94 Sq. Km.
	High Algal Concentration: (Chlorophyll > 20 µg/L)	55.25 Sq. Km.
	Heavy Sediment Plume	N/A Sq. Km.

	Higher Concern	Possible HAB Related Public Health Concern: (microcystin assumed > 20 µg/L based on surface scum analysis and historical observations Water Temp > 18°C)
	Lower Concern	Detected Area: 33.94 Sq Km.

	Higher Concern	Possible HAB Related Water Quality Concern: (Chlorophyll > 20 µg/L Water Temp > 18°C)
	Lower Concern	Detected Area: 55.25 Sq Km.