

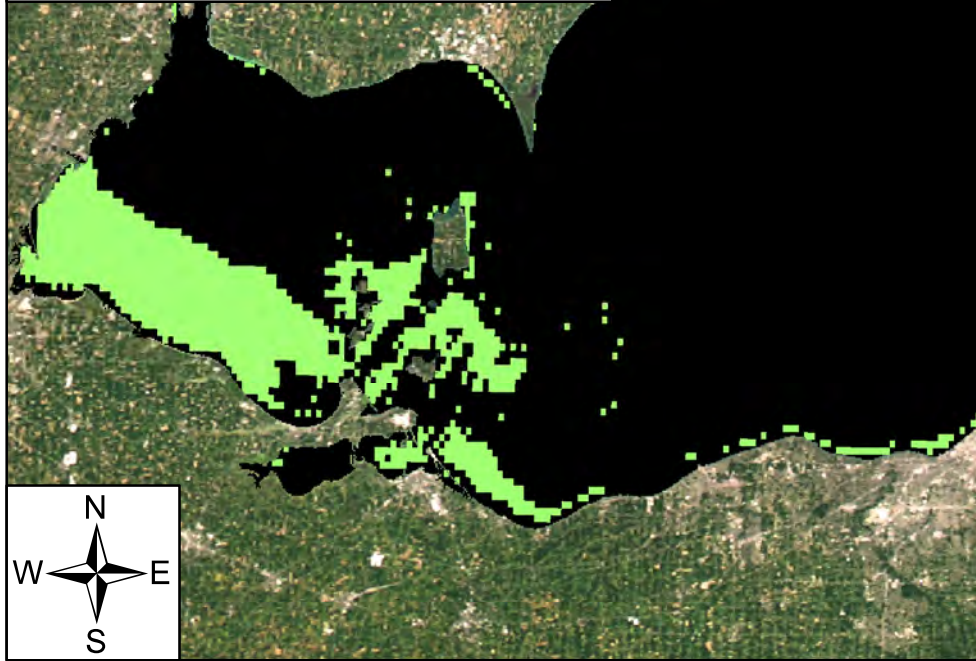
MTRI Developmental Harmful and Nuisance Algal Bloom Map



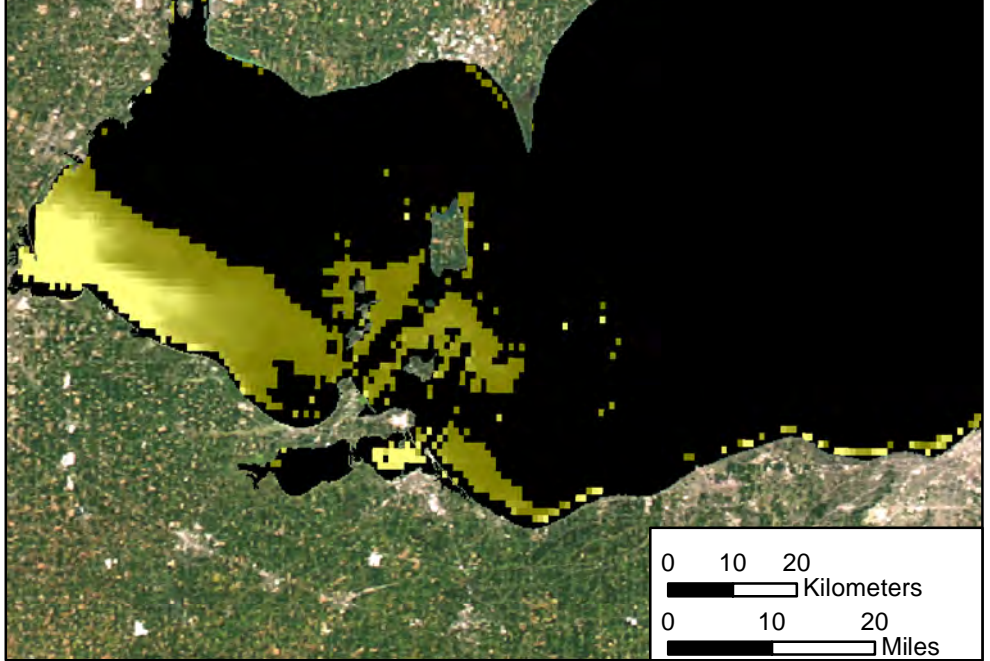
August 28, 2014
Lake Erie



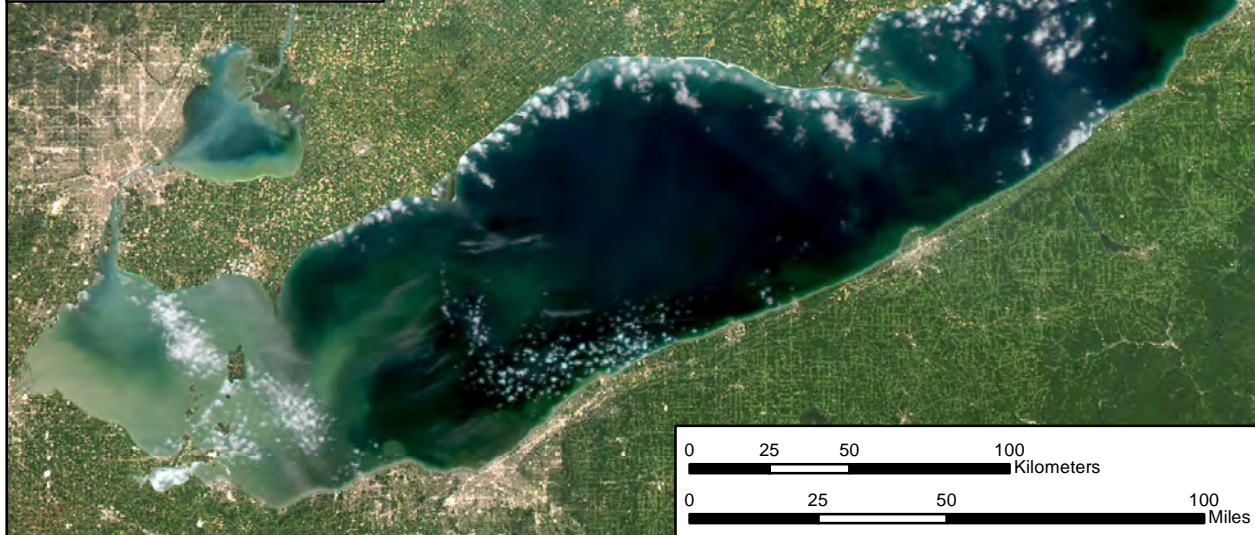
Algal and Sediment Extent Map










Water Quality & Public Health Concern Map



MODIS True Color



Area

	Surface Algal Mat Area:	N/A Sq Km.
	High Algal Concentration Area: (Chlorophyll > 20 µg/L)	1046.38 Sq Km.
	Heavy Sediment Plume Area:	N/A Sq Km.
	Higher Concern	Possible HAB Related Public Health Concern: (microcystin assumed > 20 µg/L based on surface scum analysis and historical observations, Water Temp > 18°C)
	Lower Concern	Detected Area:
		N/A Sq Km.
	Higher Concern	Possible HAB Related Water Quality Concern: (Chlorophyll > 20 µg/L, Water Temp > 18°C)
	Lower Concern	Detected Area:
		1046.38 Sq Km.