

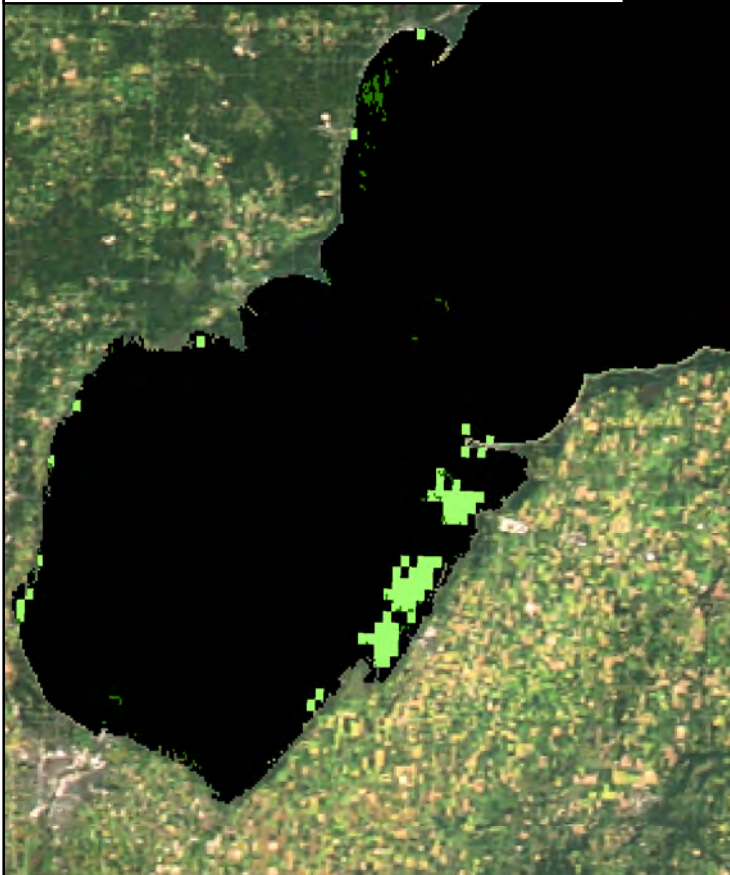
# MTRI Developmental Harmful and Nuisance Algal Bloom Map



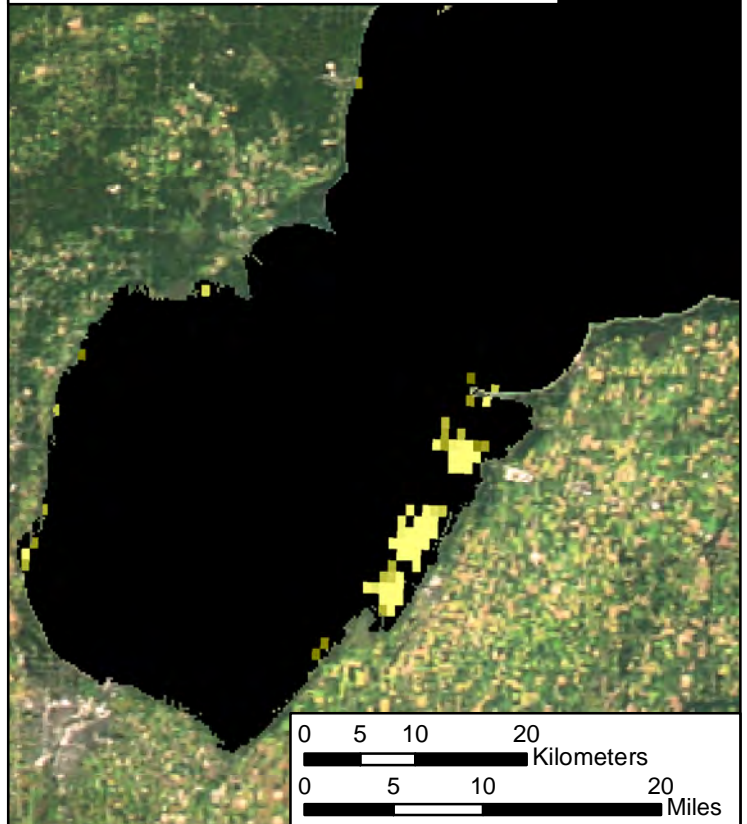
Saginaw Bay  
May 24, 2014



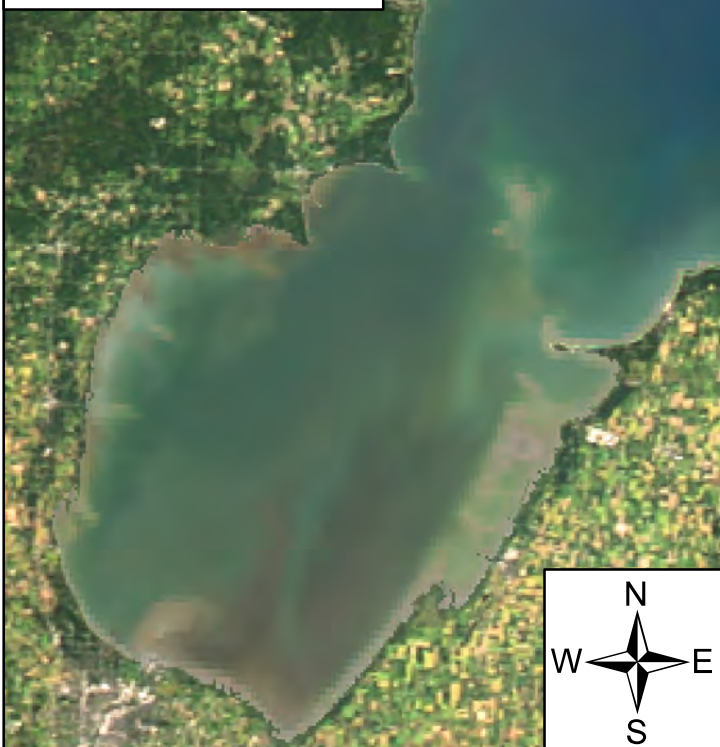
Algal and Sediment Extent Map



Water Quality & Public Health Concern Map




MODIS True Color





## Area

 Surface Algal Mat N/A Sq. Km.

 High Algal Concentration:  
(Chlorophyll > 20 µg/L) 59.19 Sq. Km.

 Heavy Sediment Plume N/A Sq. Km.

 Higher Concern Possible HAB Related Public Health Concern: (microcystin assumed > 20 µg/L based on surface scum analysis and historical observations Water Temp > 18°C)  
Lower Concern Detected Area: N/A Sq. Km.

 Higher Concern Possible HAB Related Water Quality Concern: (Chlorophyll > 20 µg/L Water Temp > 18°C)  
Lower Concern Detected Area: 59.19 Sq. Km.