

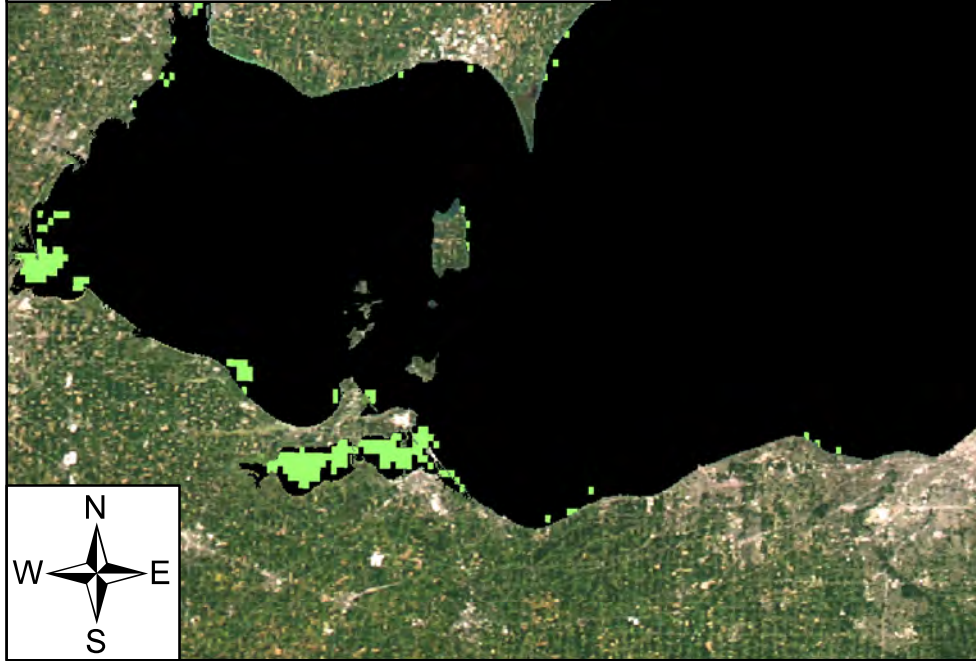
# MTRI Developmental Harmful and Nuisance Algal Bloom Map



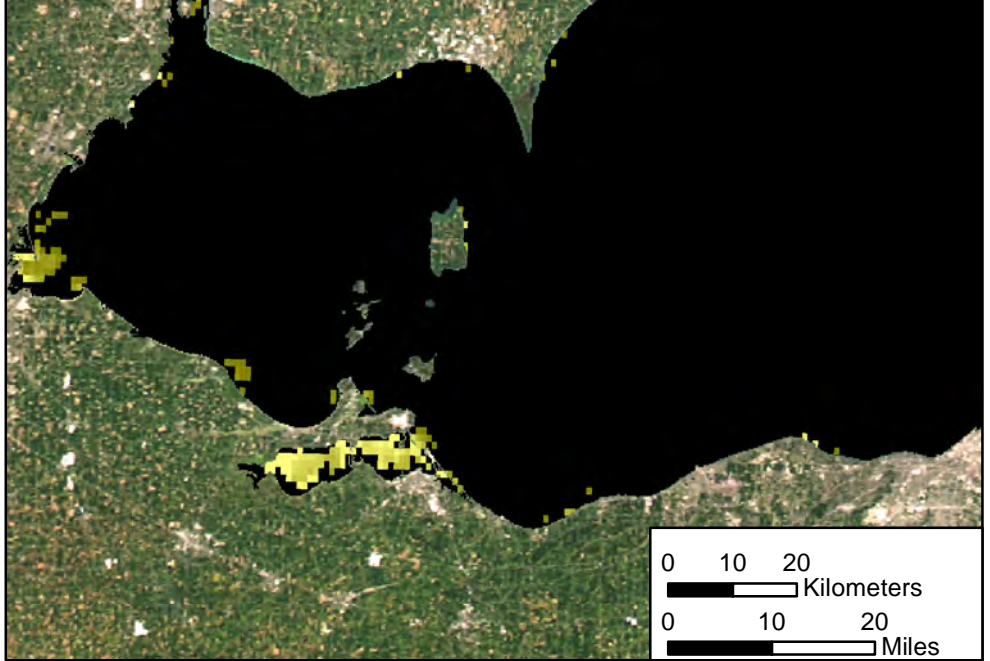
June 7, 2014  
Lake Erie



Algal and Sediment Extent Map








Water Quality & Public Health Concern Map



MODIS True Color



**Area**

	Surface Algal Mat Area:	N/A Sq Km.
	High Algal Concentration Area: (Chlorophyll > 20 µg/L)	64.44 Sq Km.
	Heavy Sediment Plume Area:	N/A Sq Km.
	Higher Concern Possible HAB Related Public Health Concern: (microcystin assumed > 20 µg/L based on surface scum analysis and historical observations, Water Temp > 18°C)	
	Higher Concern Possible HAB Related Water Quality Concern: (Chlorophyll > 20 µg/L, Water Temp > 18°C)	
	Lower Concern Detected Area:	N/A Sq Km.
	Lower Concern Detected Area:	64.44 Sq Km.