

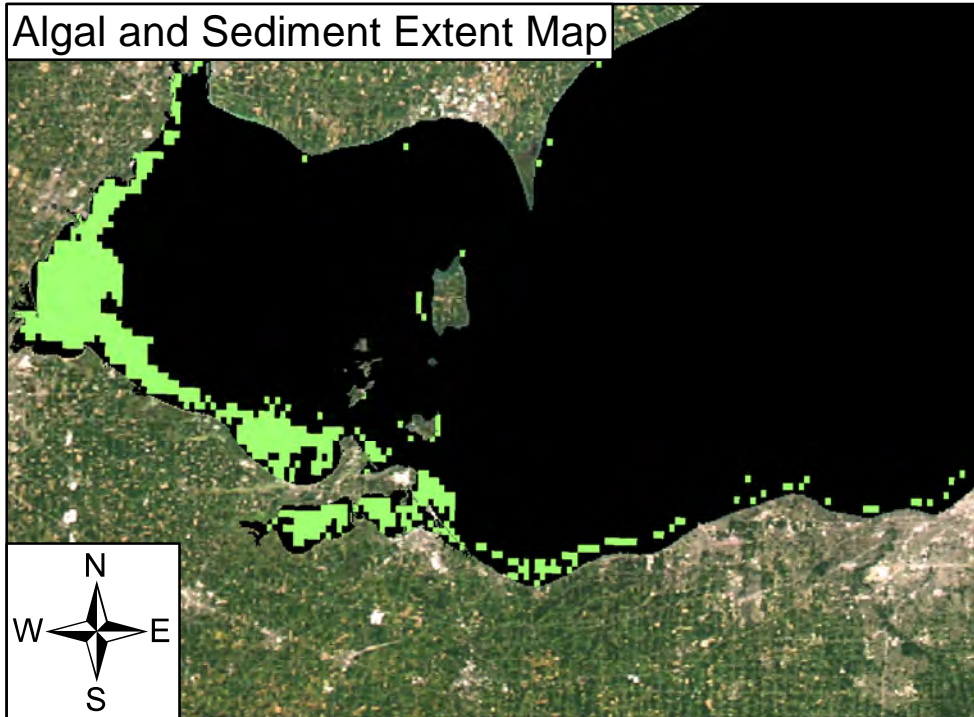
MTRI Developmental Harmful and Nuisance Algal Bloom Map



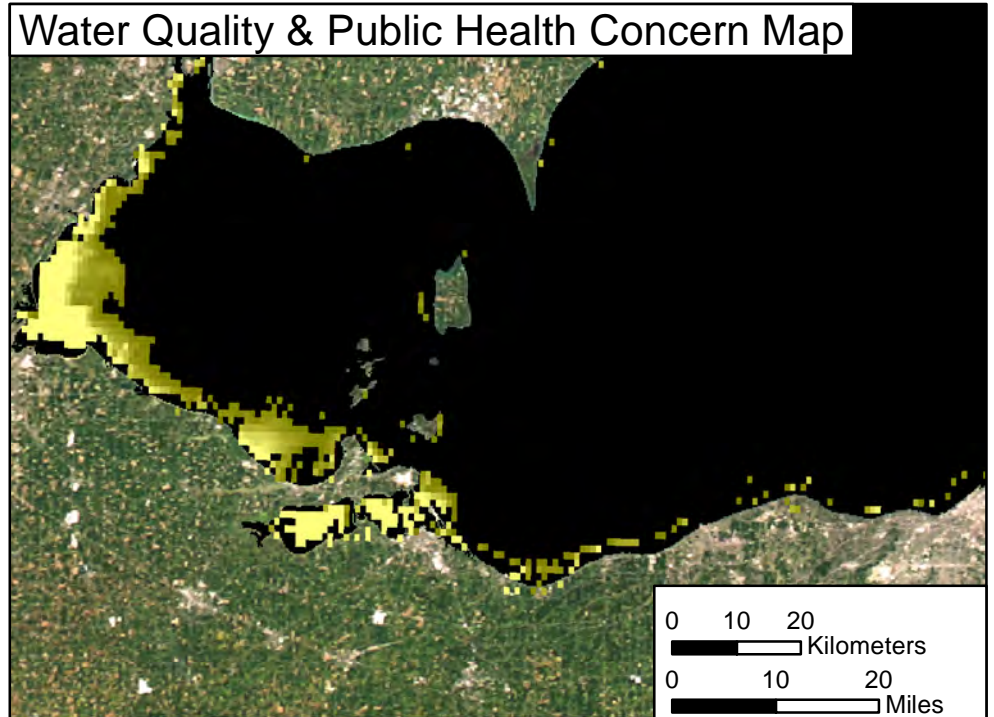
June 5, 2014
Lake Erie



Algal and Sediment Extent Map










Water Quality & Public Health Concern Map



MODIS True Color



Area

	Surface Algal Mat Area:	N/A Sq Km.
	High Algal Concentration Area: (Chlorophyll > 20 µg/L)	487.19 Sq Km.
	Heavy Sediment Plume Area:	N/A Sq Km.
	Higher Concern Possible HAB Related Public Health Concern: (microcystin assumed > 20 µg/L based on surface scum analysis and historical observations, Water Temp > 18°C)	
	Lower Concern Detected Area:	N/A Sq Km.
	Higher Concern Possible HAB Related Water Quality Concern: (Chlorophyll > 20 µg/L, Water Temp > 18°C)	
	Lower Concern Detected Area:	487.19 Sq Km.