

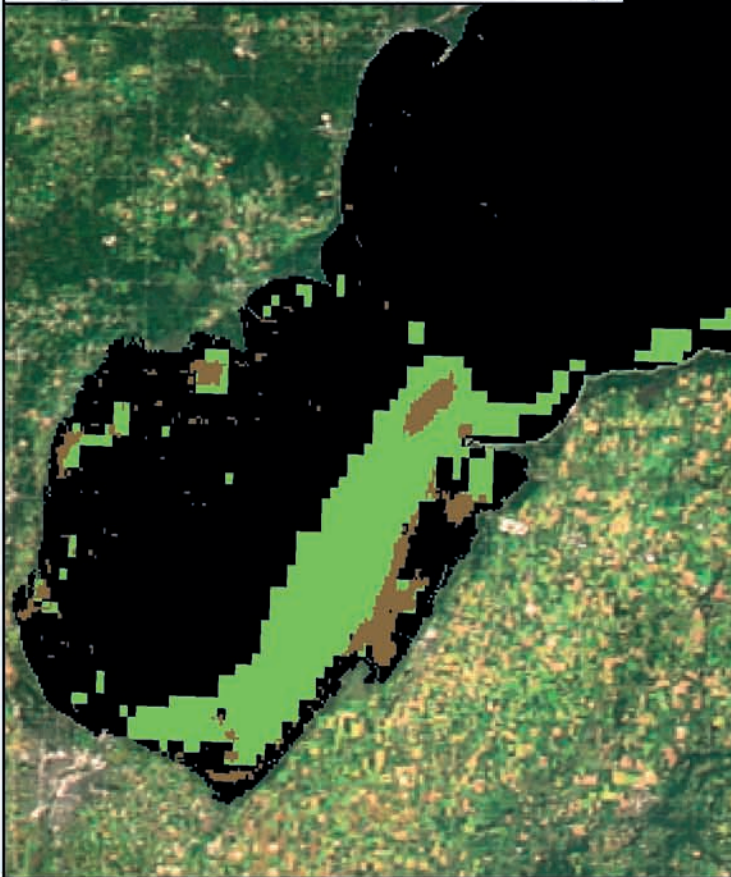
MTRI Developmental Harmful and Nuisance Algal Bloom Map



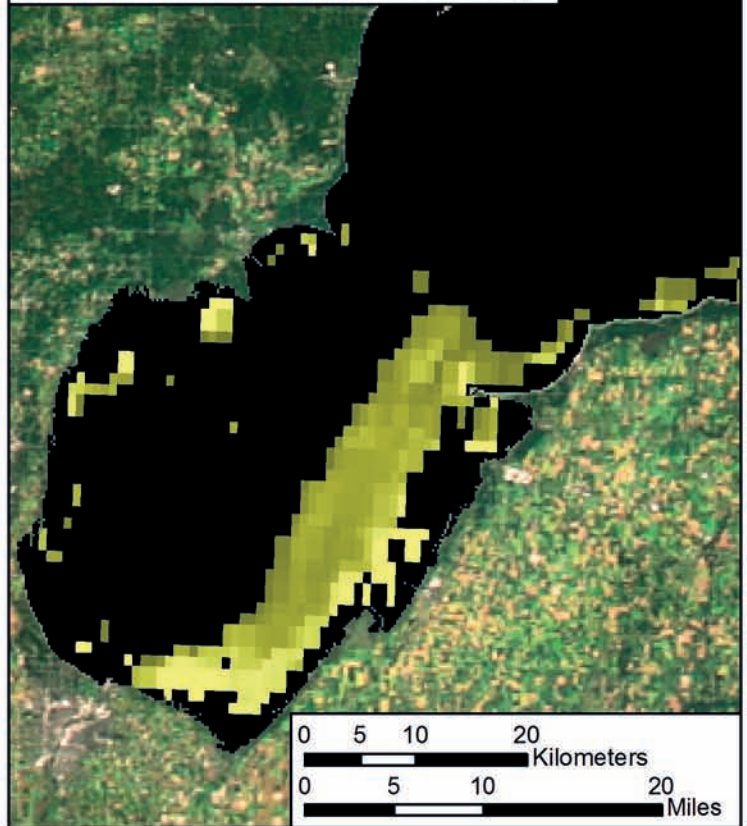
Saginaw Bay
August 7, 2013



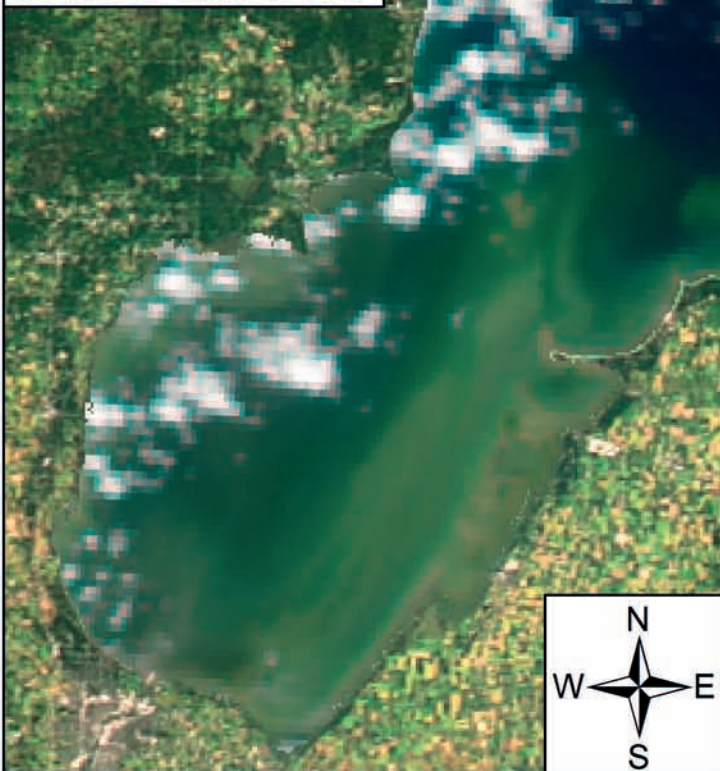
Algal and Sediment Extent Map



Water Quality & Public Health Concern Map



MODIS True Color



Area

	Surface Algal Mat	0 Sq. Km.
	High Algal Concentration: (Chlorophyll > 20 µg/L)	591 Sq. Km.
	Heavy Sediment Plume	116 Sq. Km.

	Higher Concern	Possible HAB Related Public Health Concern: (microcystin assumed > 20 µg/L based on surface scum analysis and historical observations Water Temp > 18°C)
	Lower Concern	Detected Area: 0 Sq. Km.

	Higher Concern	Possible HAB Related Water Quality Concern: (Chlorophyll > 20 µg/L Water Temp > 18°C)
	Lower Concern	Detected Area: 591 Sq. Km.