

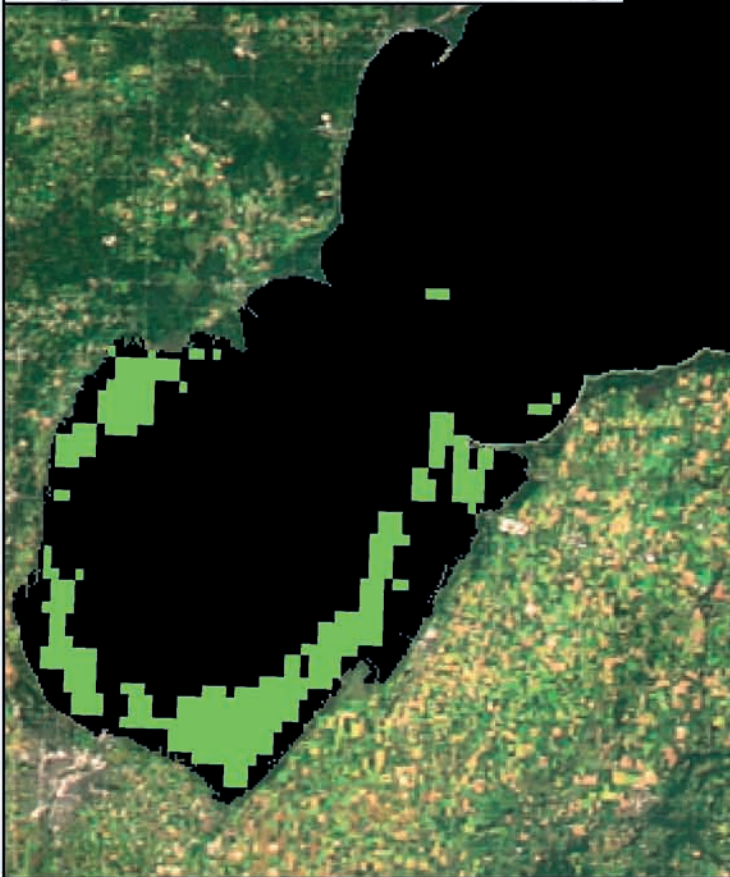
# MTRI Developmental Harmful and Nuisance Algal Bloom Map



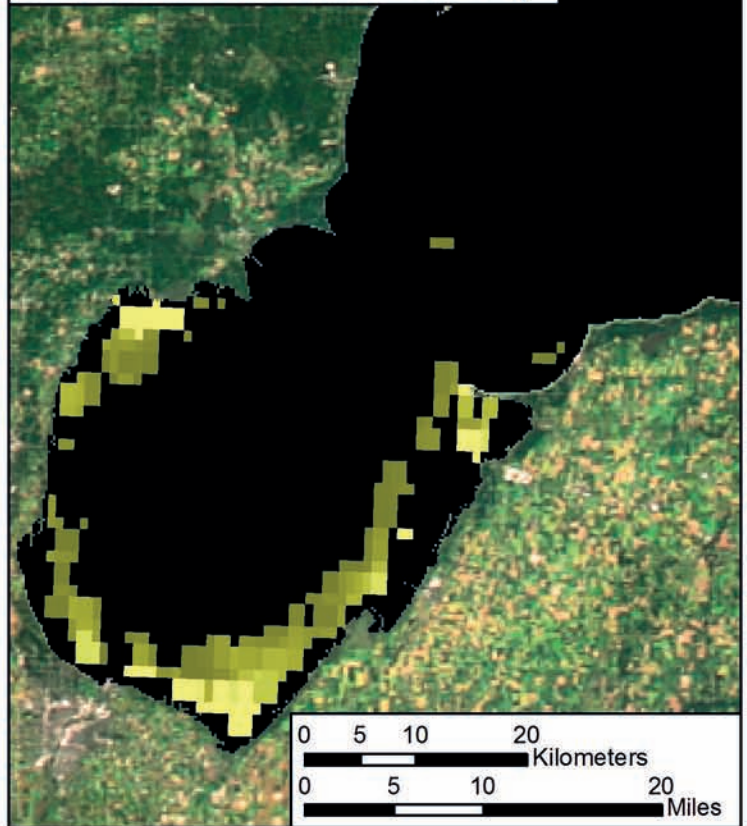
Saginaw Bay  
July 13, 2013



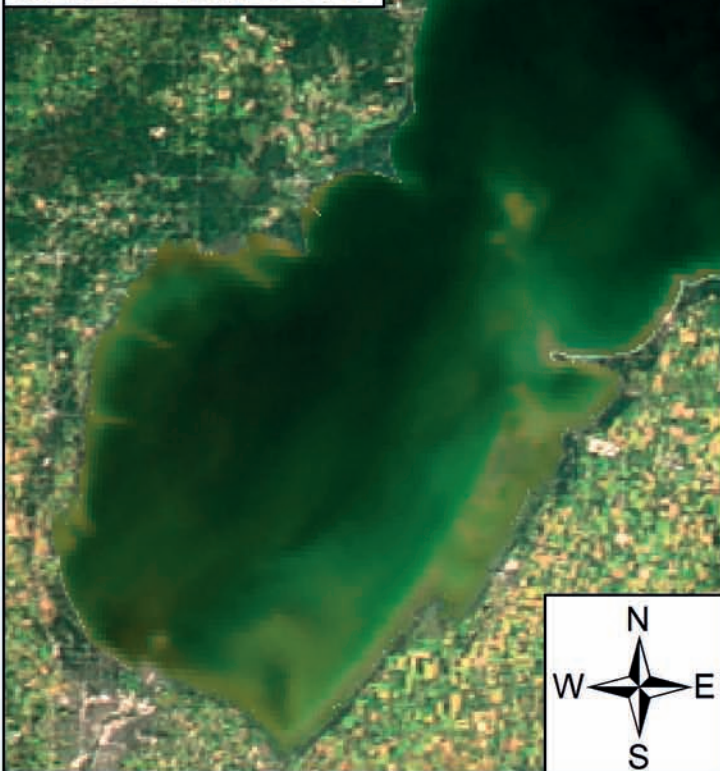
Algal and Sediment Extent Map






Water Quality & Public Health Concern Map





MODIS True Color



## Area

|   |  |             |
|---|--|-------------|
|  | Surface Algal Mat                                    | 0 Sq. Km.   |
|  | High Algal Concentration:<br>(Chlorophyll > 20 µg/L) | 366 Sq. Km. |
|  | Heavy Sediment Plume                                 | 0 Sq. Km.   |

|   |                |  |
|---|----------------|--|
|  | Higher Concern | Possible HAB Related Public Health Concern: (microcystin assumed > 20 µg/L based on surface scum analysis and historical observations Water Temp > 18°C) |
|   | Lower Concern  | Detected Area: 0 Sq. Km.   |

|   |                |   |
|---|----------------|---|
|  | Higher Concern | Possible HAB Related Water Quality Concern: (Chlorophyll > 20 µg/L Water Temp > 18°C) |
|   | Lower Concern  | Detected Area: 366 Sq. Km.  |