

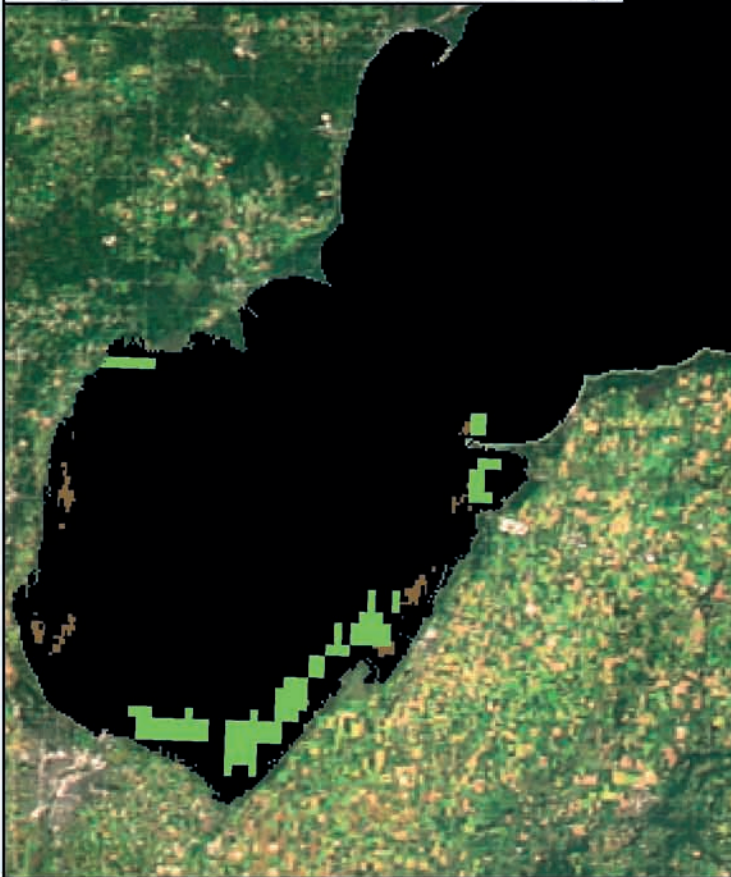
MTRI Developmental Harmful and Nuisance Algal Bloom Map



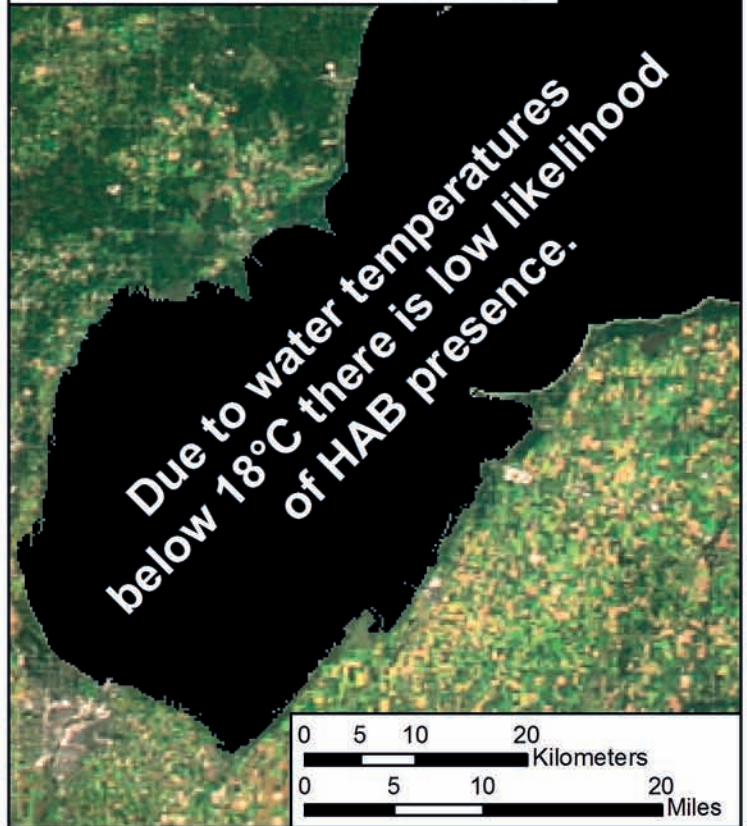
Saginaw Bay
June 18, 2013



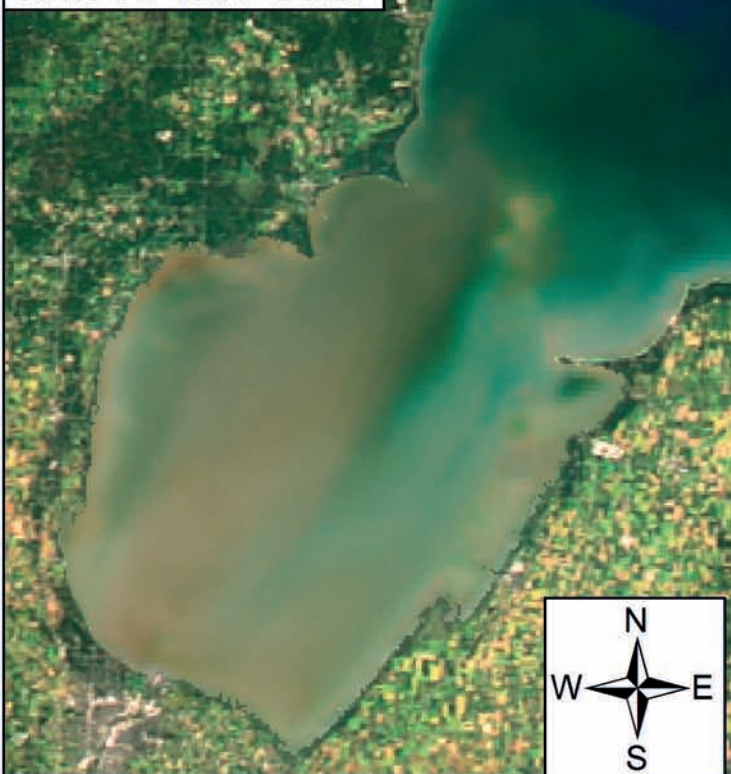
Algal and Sediment Extent Map






Water Quality & Public Health Concern Map







MODIS True Color



Area

	Surface Algal Mat	0 Sq. Km.
	High Algal Concentration: (Chlorophyll > 20 µg/L)	128 Sq. Km.
	Heavy Sediment Plume	43 Sq. Km.

	Higher Concern	Possible HAB Related Public Health Concern: (microcystin assumed > 20 µg/L based on surface scum analysis and historical observations Water Temp > 18°C)	
	Lower Concern	Detected Area:	0 Sq Km.

	Higher Concern	Possible HAB Related Water Quality Concern: (Chlorophyll > 20 µg/L Water Temp > 18°C)	
	Lower Concern	Detected Area:	0 Sq Km.