

MTRI Developmental Harmful and Nuisance Algal Bloom Map

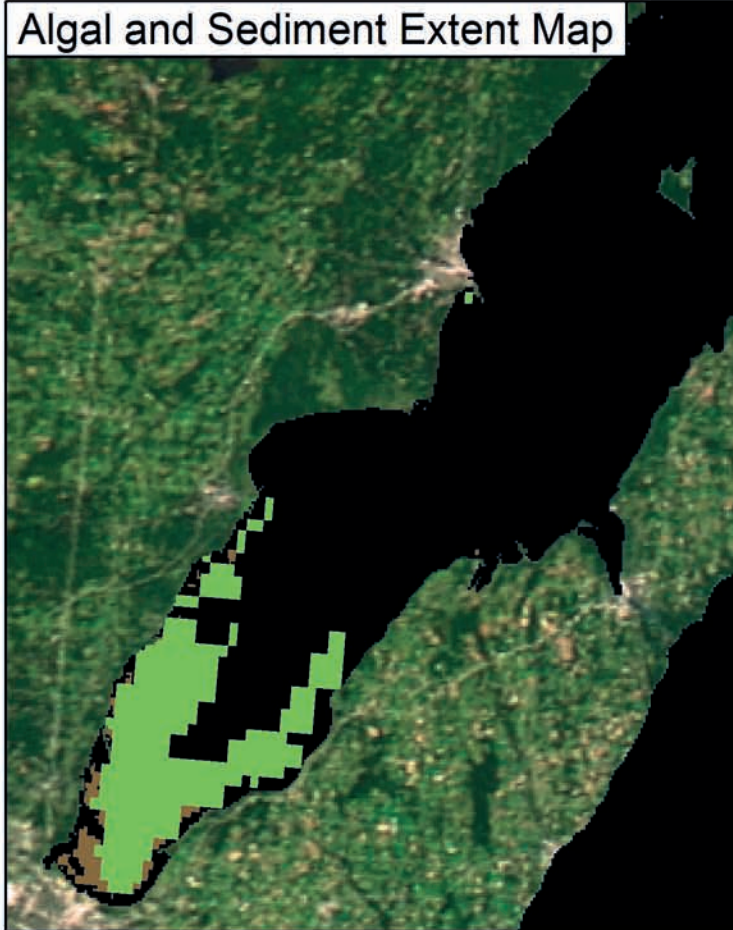
MichiganTech
Research Institute
www.mtri.org



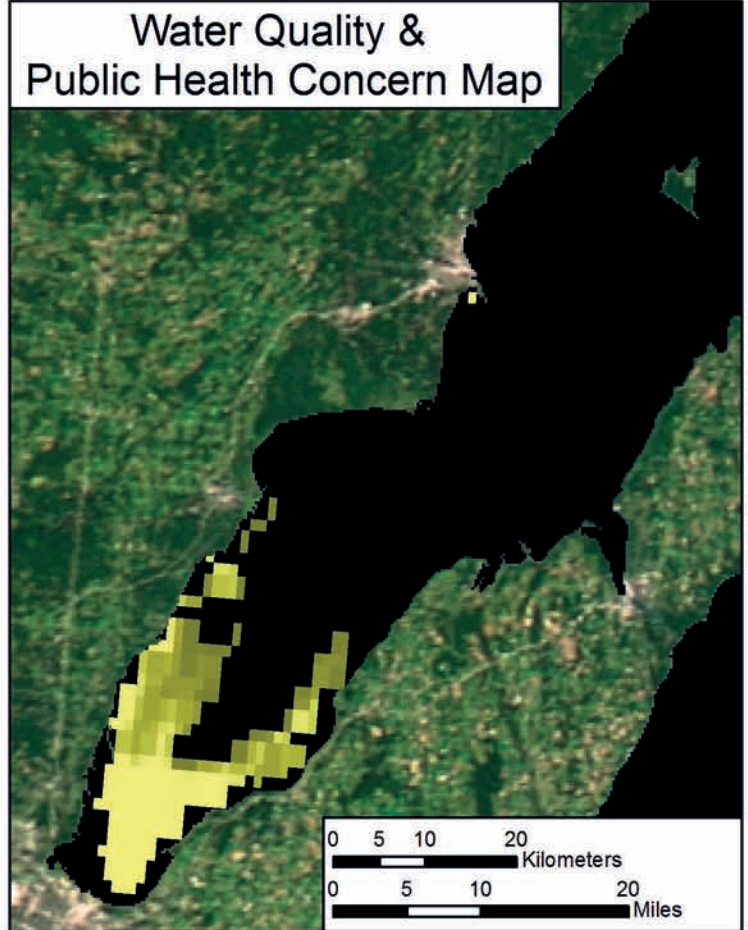
Green Bay
September 13, 2013



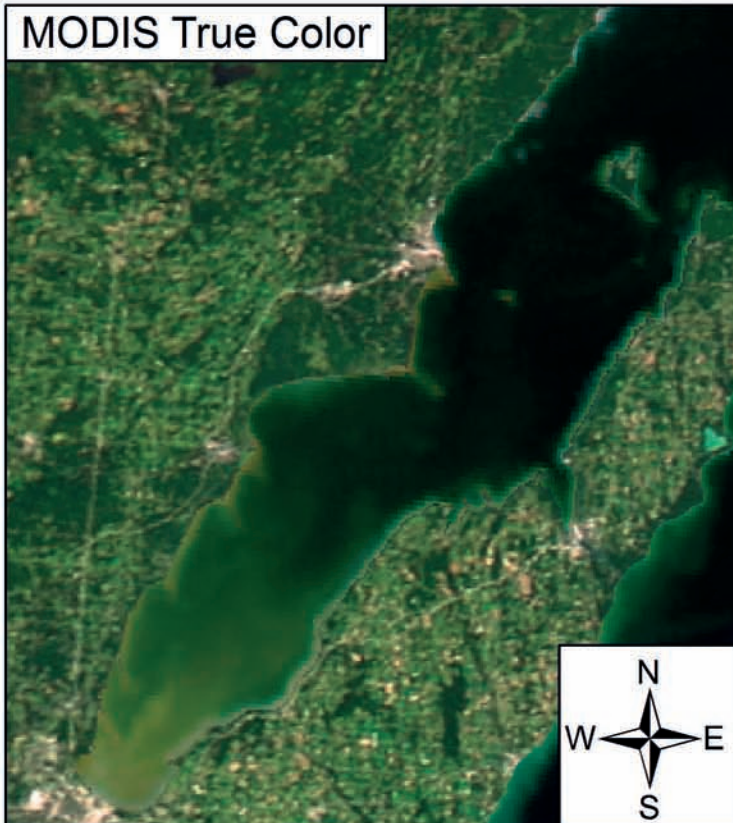
Algal and Sediment Extent Map






Water Quality & Public Health Concern Map





MODIS True Color




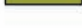
Area

	Surface Algal Mat	0 Sq. Km.
	High Algal Concentration: (Chlorophyll > 20 µg/L)	307 Sq. Km.
	Heavy Sediment Plume	123 Sq. Km.

 Higher Concern Possible HAB Related Public Health Concern: (microcystin assumed > 20 µg/L based on surface scum analysis and historical observations Water Temp > 18°C)

 Lower Concern Detected Area: 0 Sq Km.

 Higher Concern Possible HAB Related Water Quality Concern: (Chlorophyll > 20 µg/L Water Temp > 18°C)

 Lower Concern Detected Area: 307 Sq Km.