

# MTRI Developmental Harmful and Nuisance Algal Bloom Map

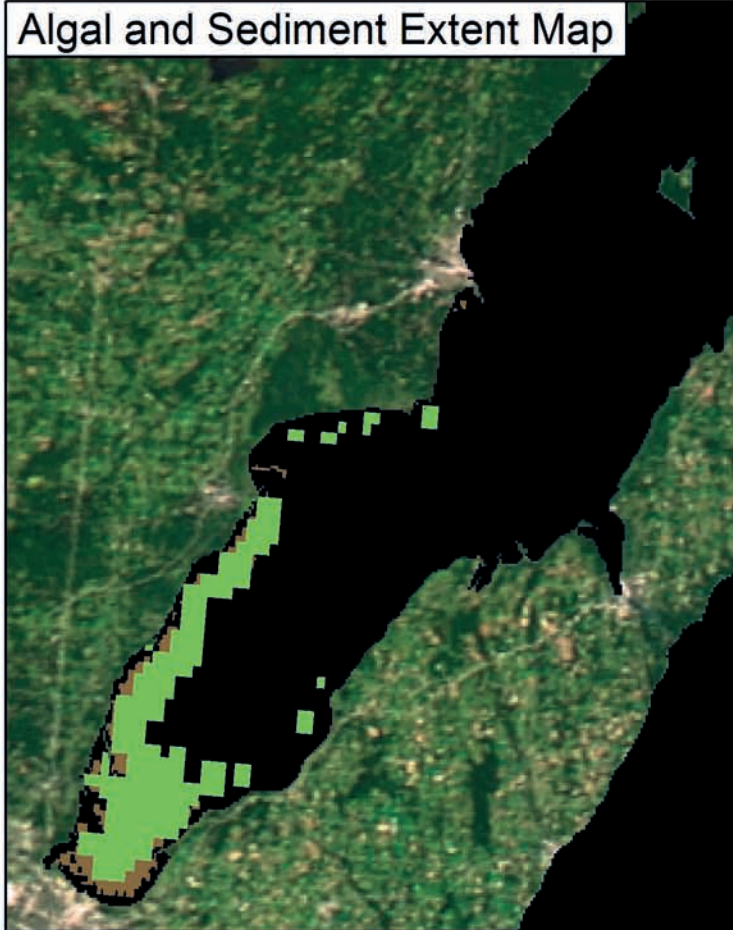
**MichiganTech**  
Research Institute  
[www.mtri.org](http://www.mtri.org)



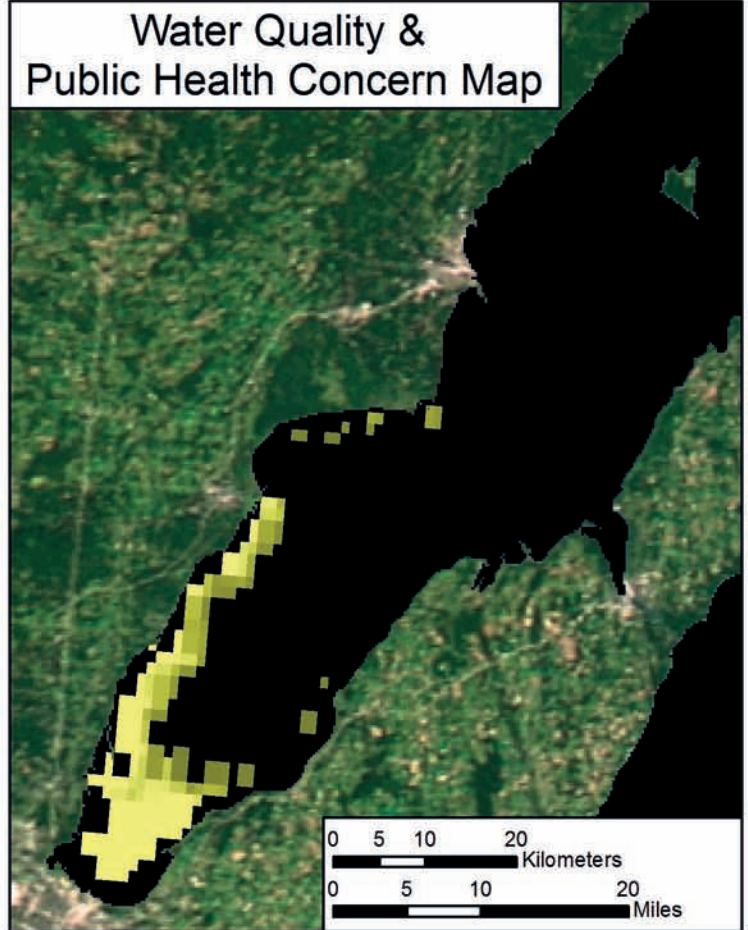
Green Bay  
September 29, 2013



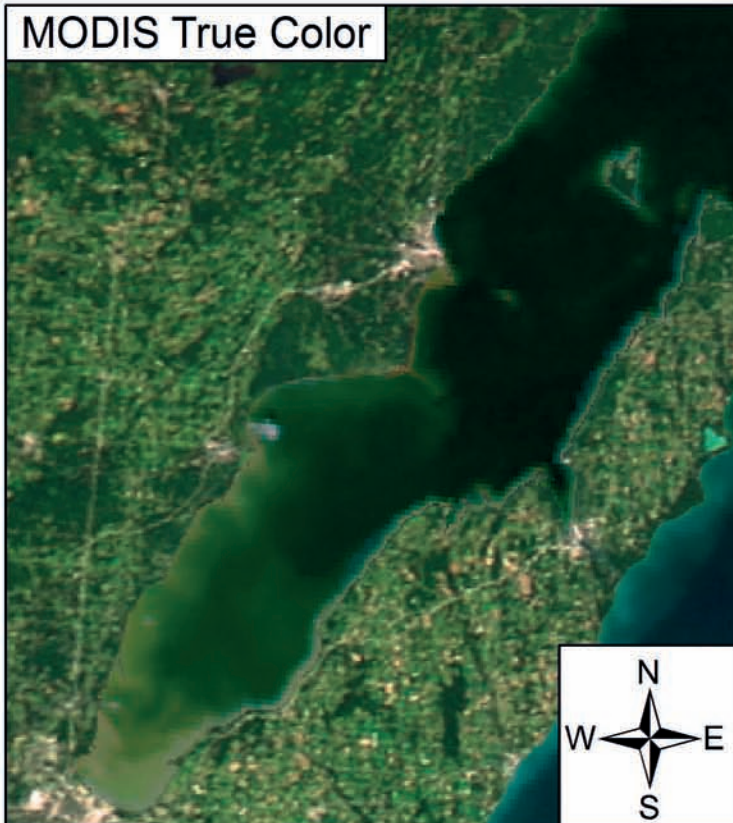
Algal and Sediment Extent Map






Water Quality & Public Health Concern Map





MODIS True Color




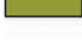
## Area

	Surface Algal Mat	0 Sq. Km.
	High Algal Concentration: (Chlorophyll > 20 µg/L)	236 Sq. Km.
	Heavy Sediment Plume	128 Sq. Km.

 Higher Concern Possible HAB Related Public Health Concern: (microcystin assumed > 20 µg/L based on surface scum analysis and historical observations Water Temp > 18°C)

 Lower Concern Detected Area: 0 Sq Km.

 Higher Concern Possible HAB Related Water Quality Concern: (Chlorophyll > 20 µg/L Water Temp > 18°C)

 Lower Concern Detected Area: 236 Sq Km.