

MTRI Developmental Harmful and Nuisance Algal Bloom Map

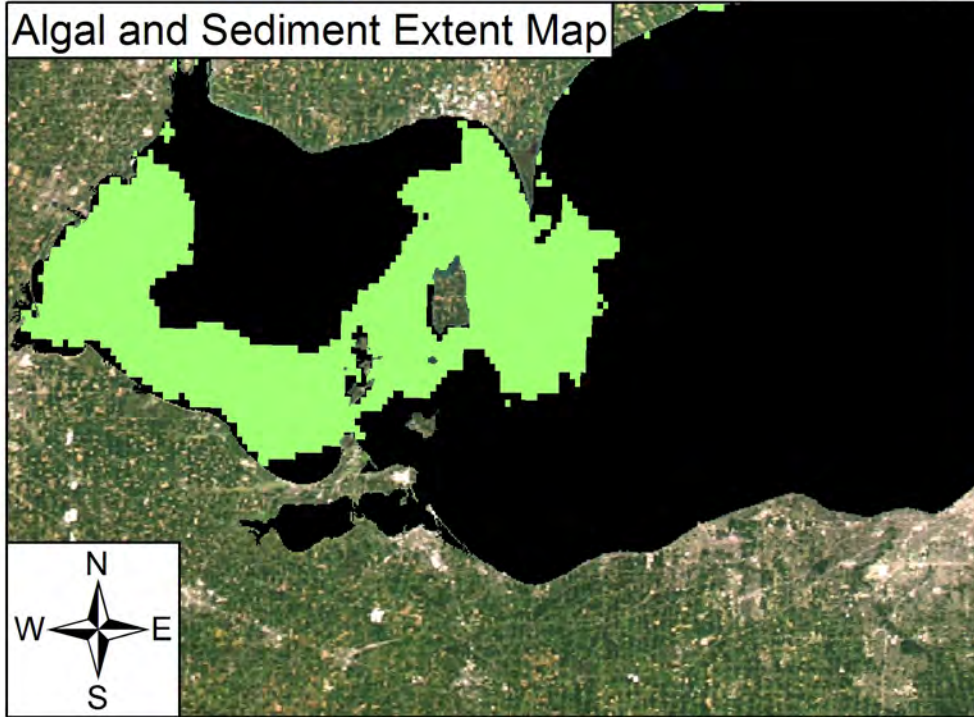
MichiganTech
Research Institute
www.mtri.org



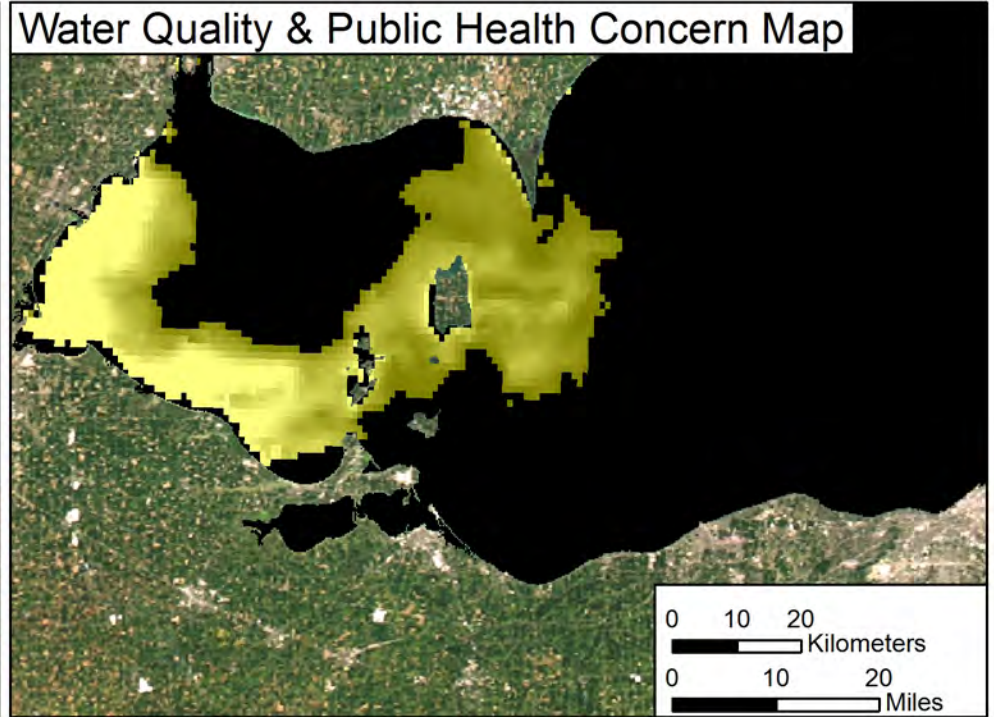
October 09, 2013
Lake Erie



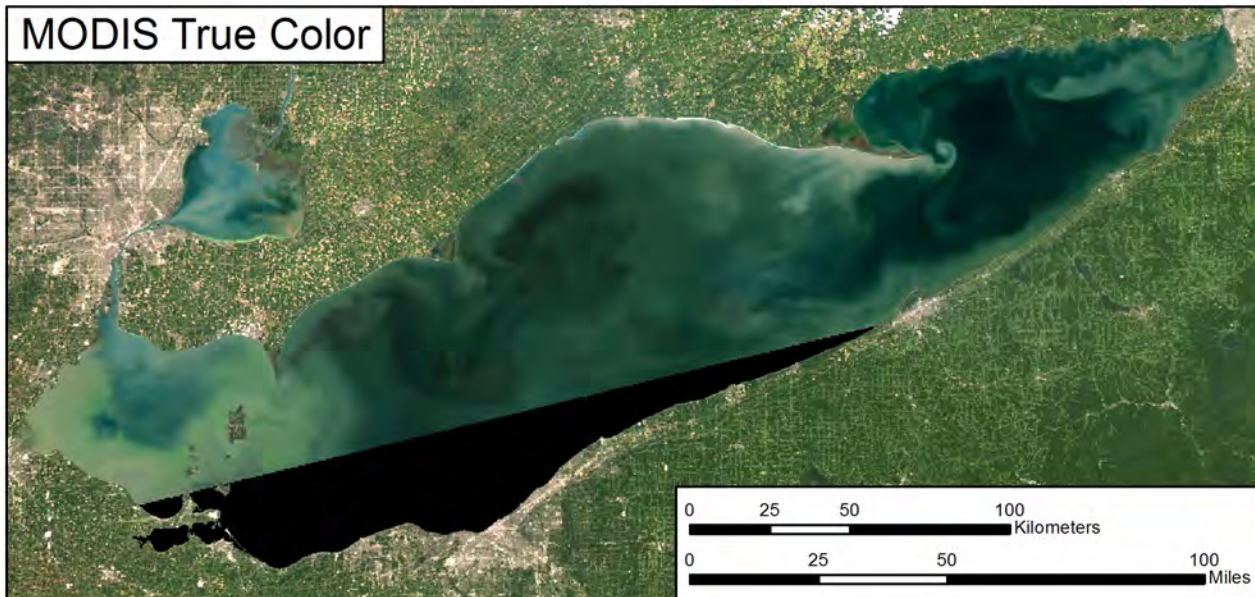
Algal and Sediment Extent Map










Water Quality & Public Health Concern Map



MODIS True Color



Area

	Surface Algal Mat Area:	0 Sq Km.
	High Algal Concentration Area: (Chlorophyll > 18 µg/L)	2886 Sq Km.
	Heavy Sediment Plume Area:	0 Sq Km.
	Higher Concern	Possible HAB Related Public Health Concern: (microcystin assumed > 18 µg/L based on surface scum analysis and historical observations, Water Temp > 18°C)
	Lower Concern	Detected Area: 0 Sq Km.
	Higher Concern	Possible HAB Related Water Quality Concern: (Chlorophyll > 18 µg/L, Water Temp > 18°C)
	Lower Concern	Detected Area: 2886 Sq Km.