

# MTRI Developmental Harmful and Nuisance Algal Bloom Map

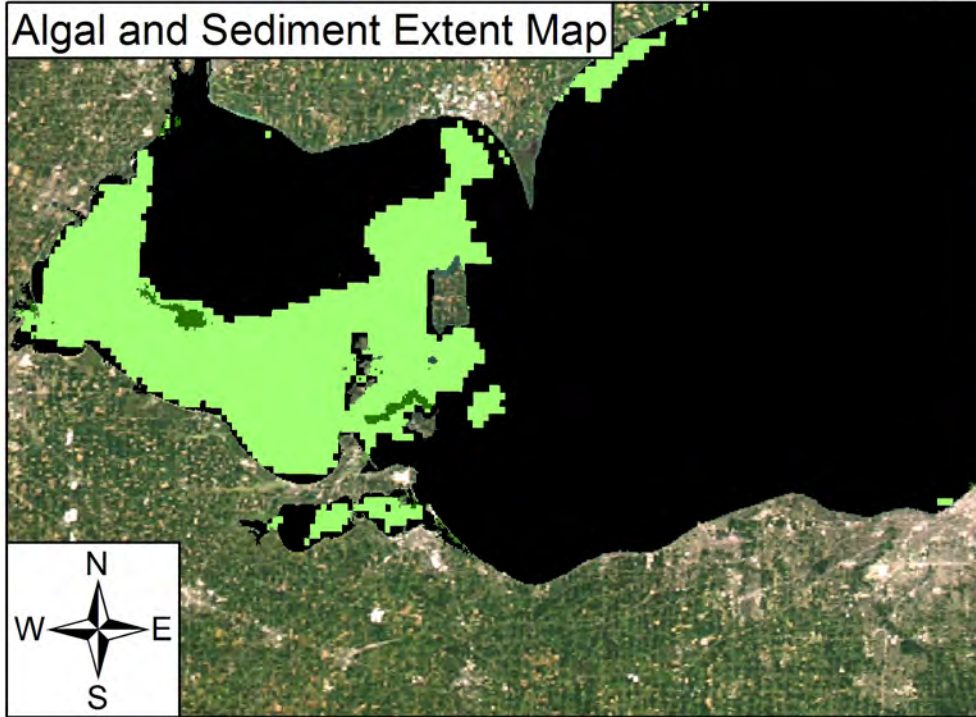
**MichiganTech**  
Research Institute  
[www.mtri.org](http://www.mtri.org)



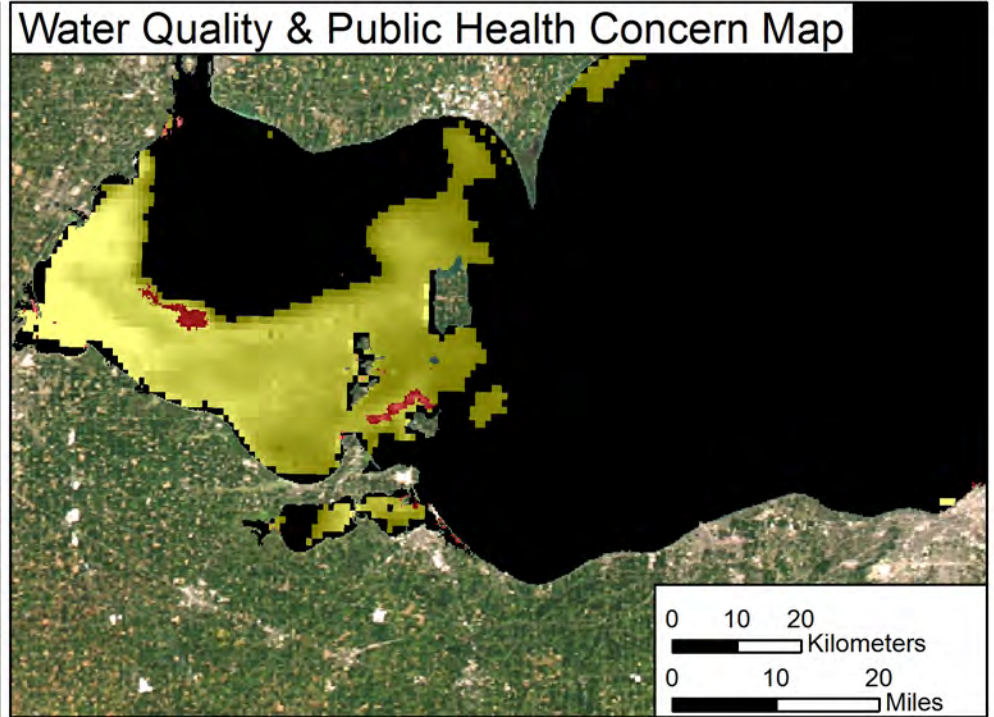
October 02, 2013  
Lake Erie



Algal and Sediment Extent Map





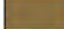
Water Quality & Public Health Concern Map







MODIS True Color



**Area**

-  Surface Algal Mat Area: 68 Sq Km.
-  High Algal Concentration Area: 2320 Sq Km.  
(Chlorophyll > 18 µg/L)
-  Heavy Sediment Plume Area: 0 Sq Km.

-  Higher Concern Possible HAB Related Public Health Concern:  
(microcystin assumed > 18 µg/L based on surface scum analysis and historical observations, Water Temp > 18°C)
-  Lower Concern Detected Area: 68 Sq Km.

-  Higher Concern Possible HAB Related Water Quality Concern:  
(Chlorophyll > 18 µg/L, Water Temp > 18°C)
-  Lower Concern Detected Area: 2320 Sq Km.