

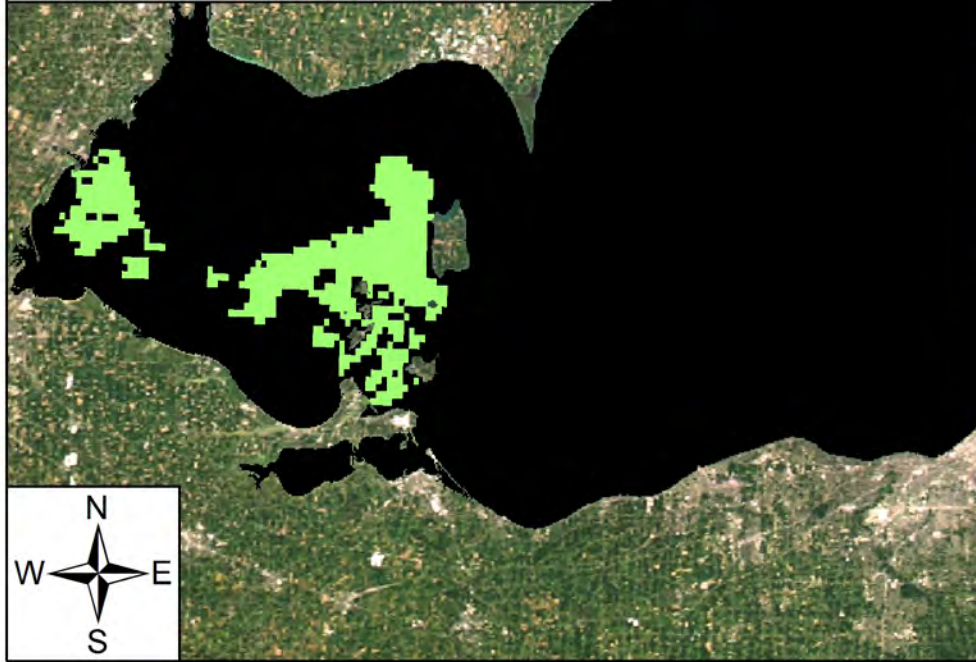
# MTRI Developmental Harmful and Nuisance Algal Bloom Map



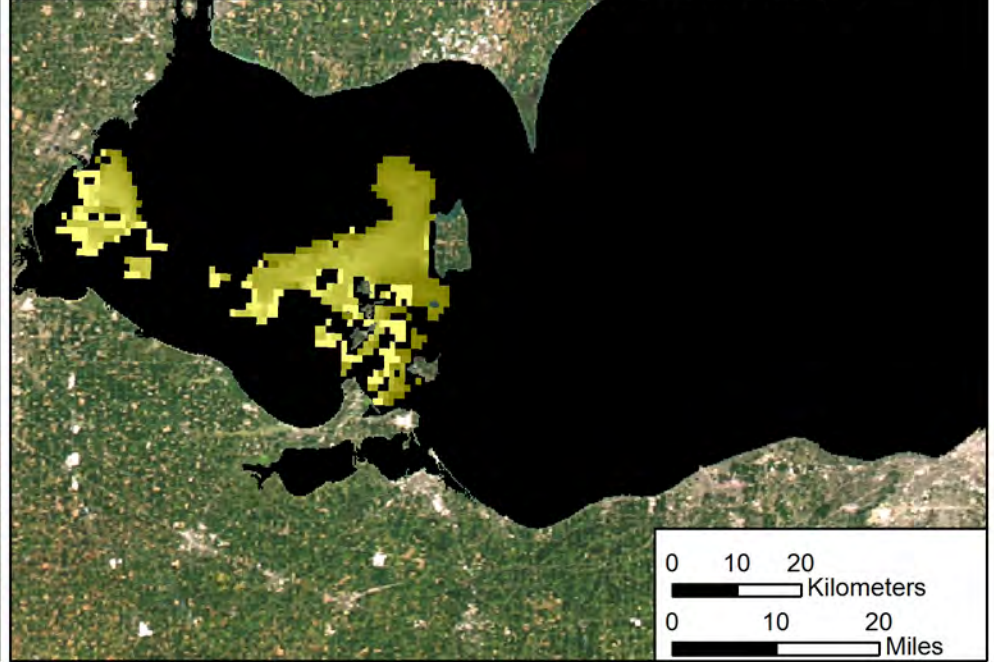
October 1, 2013  
Lake Erie



Algal and Sediment Extent Map










Water Quality & Public Health Concern Map



MODIS True Color



## Area

	Surface Algal Mat Area:	0 Sq Km.
	High Algal Concentration Area: (Chlorophyll > 18 µg/L)	662 Sq Km.
	Heavy Sediment Plume Area:	0 Sq Km.
	Higher Concern	Possible HAB Related Public Health Concern: (microcystin assumed > 18 µg/L based on surface scum analysis and historical observations, Water Temp > 18°C)
	Lower Concern	Detected Area: 0 Sq Km.
	Higher Concern	Possible HAB Related Water Quality Concern: (Chlorophyll > 18 µg/L, Water Temp > 18°C)
	Lower Concern	Detected Area: 662 Sq Km.