

# MTRI Developmental Harmful and Nuisance Algal Bloom Map

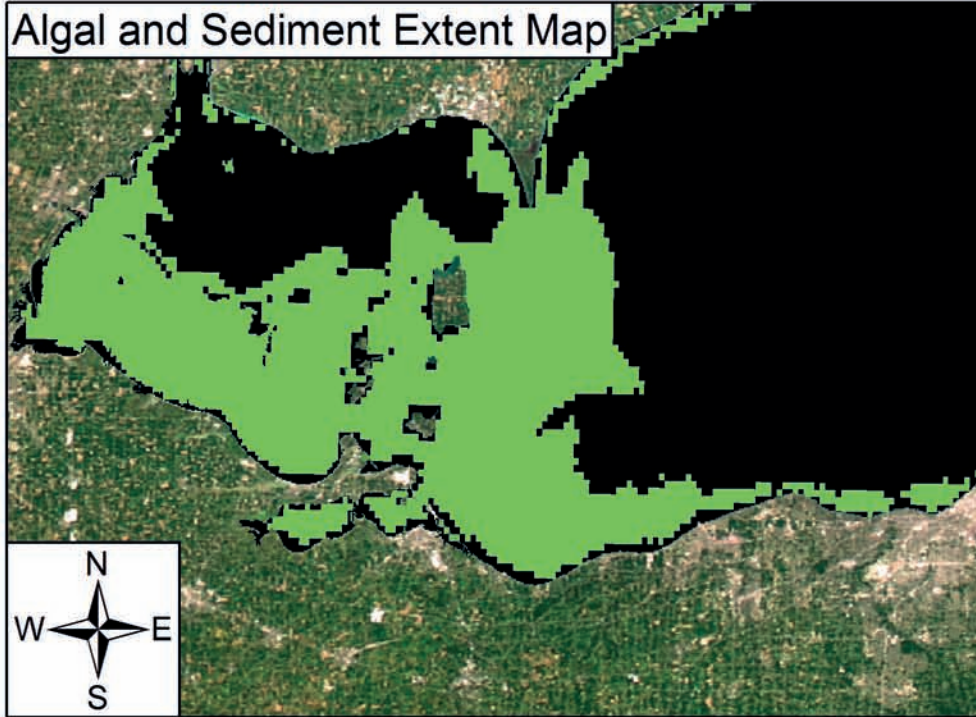
**MichiganTech**  
Research Institute  
[www.mtri.org](http://www.mtri.org)



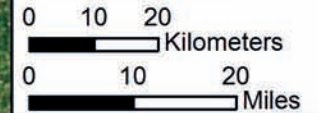
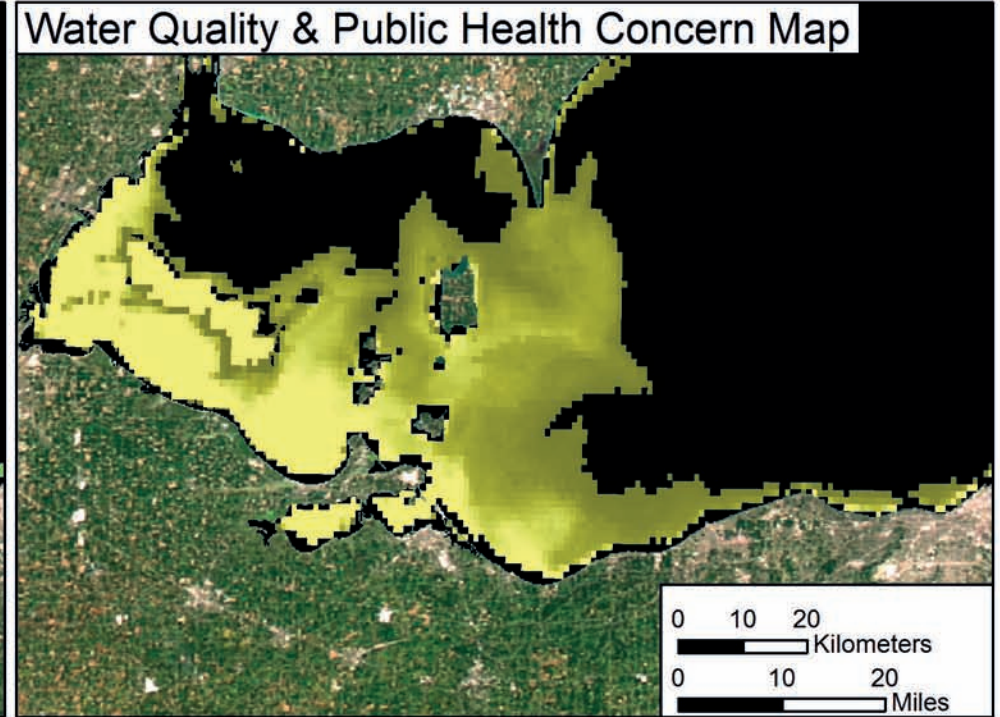
September 17, 2013  
Lake Erie



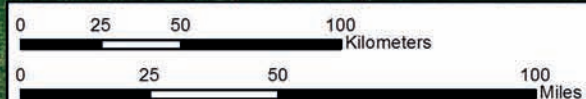
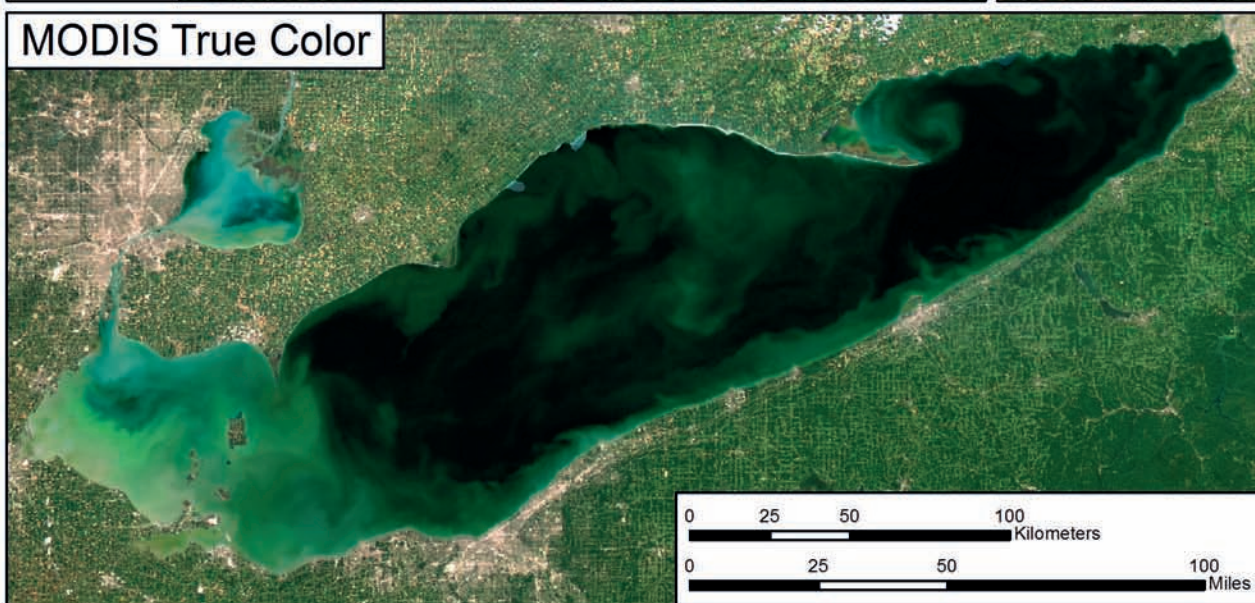
Algal and Sediment Extent Map









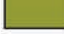
Water Quality & Public Health Concern Map



MODIS True Color



## Area

	Surface Algal Mat Area:	0 Sq Km.
	High Algal Concentration Area: (Chlorophyll > 20 µg/L)	3808 Sq Km.
	Heavy Sediment Plume Area:	0 Sq Km.
	Higher Concern	Possible HAB Related Public Health Concern: (microcystin assumed > 20 µg/L based on surface scum analysis and historical observations, Water Temp > 18°C)
	Lower Concern	Detected Area: 0 Sq Km.
	Higher Concern	Possible HAB Related Water Quality Concern: (Chlorophyll > 20 µg/L, Water Temp > 18°C)
	Lower Concern	Detected Area: 3808 Sq Km.