

# MTRI Developmental Harmful and Nuisance Algal Bloom Map

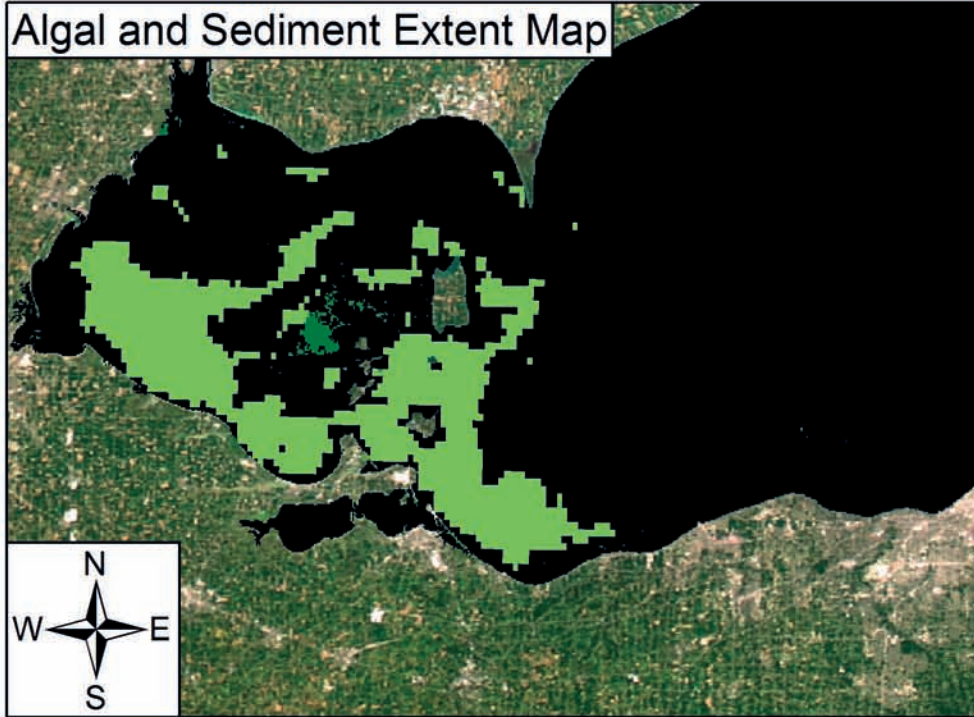
**MichiganTech**  
Research Institute  
[www.mtri.org](http://www.mtri.org)



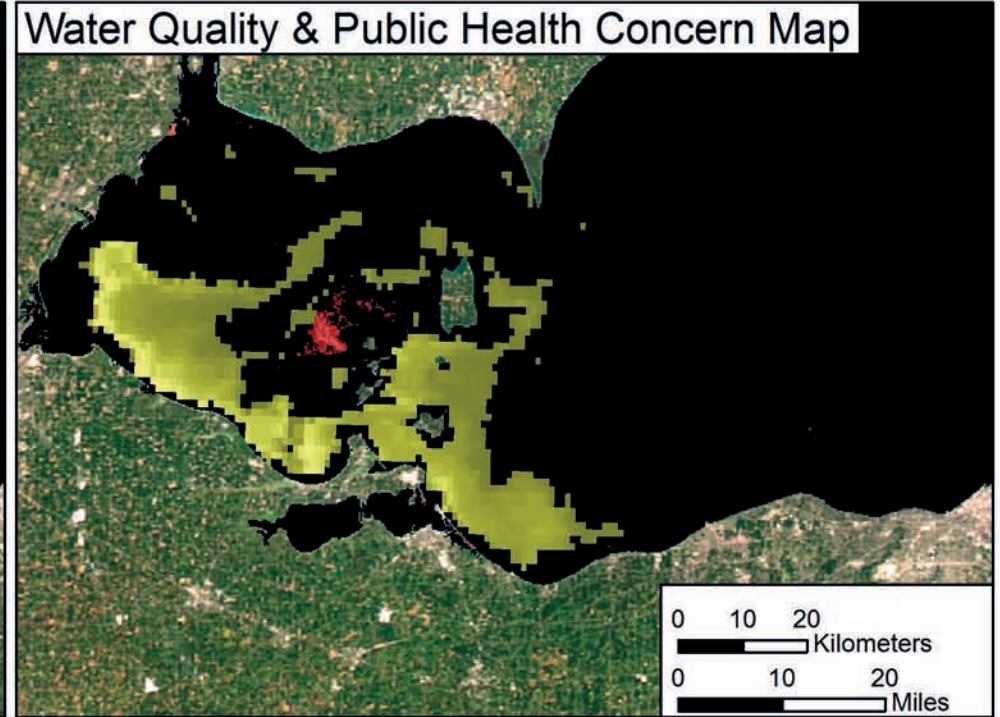
August 18, 2013  
Lake Erie



Algal and Sediment Extent Map



Water Quality & Public Health Concern Map



MODIS True Color



## Area

	Surface Algal Mat Area:	155 Sq Km.
	High Algal Concentration Area: (Chlorophyll > 20 µg/L)	1462 Sq Km.
	Heavy Sediment Plume Area:	0 Sq Km.
	Higher Concern Possible HAB Related Public Health Concern: (microcystin assumed > 20 µg/L based on surface scum analysis and historical observations, Water Temp > 18°C)	
	Lower Concern Detected Area:	155 Sq Km.
	Higher Concern Possible HAB Related Water Quality Concern: (Chlorophyll > 20 µg/L, Water Temp > 18°C)	
	Lower Concern Detected Area:	1462 Sq Km.