

MTRI Developmental Harmful and Nuisance Algal Bloom Map

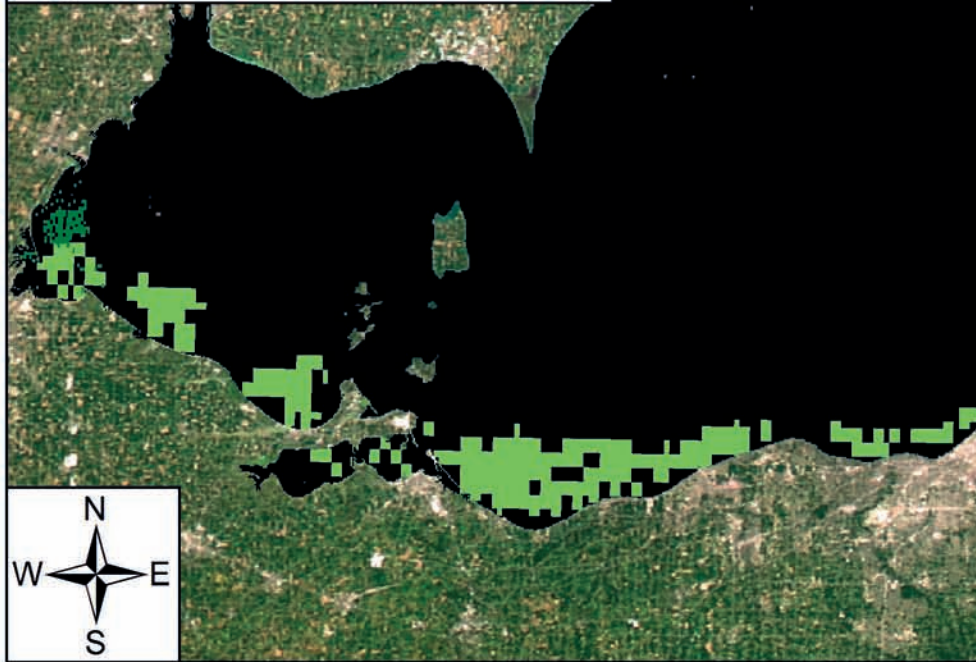
MichiganTech
Research Institute
www.mtri.org



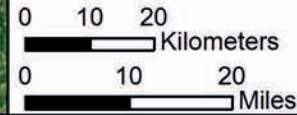
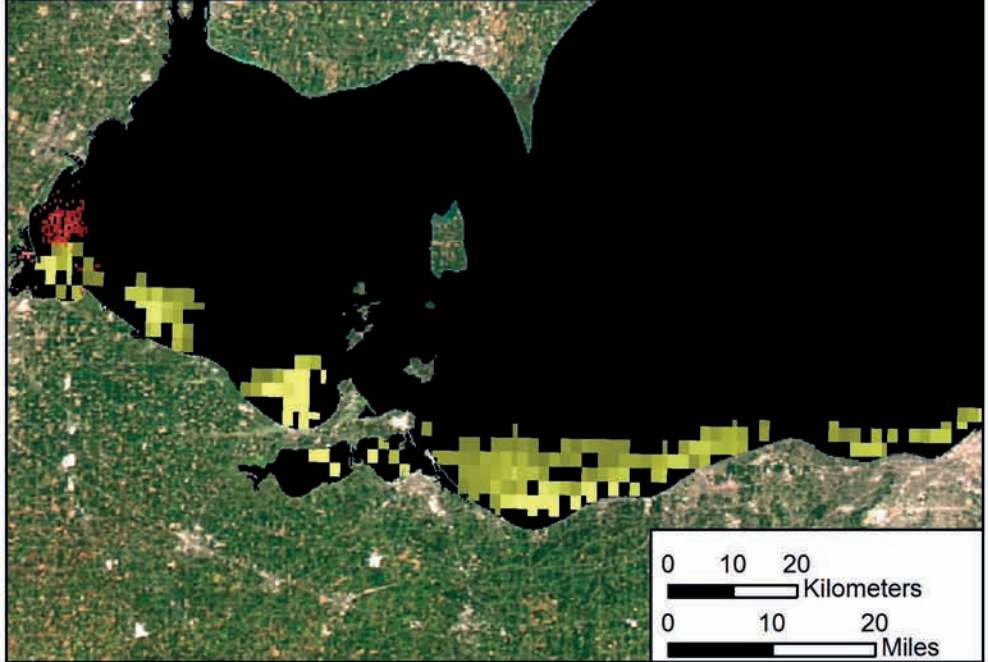
July 25, 2013
Lake Erie



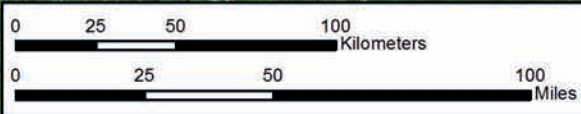
Algal and Sediment Extent Map



Water Quality & Public Health Concern Map



MODIS True Color



Area	
	Surface Algal Mat Area: 38 Sq Km.
	High Algal Concentration Area: (Chlorophyll > 20 µg/L) 820 Sq Km.
	Heavy Sediment Plume Area: 103 Sq Km.
	Higher Concern Possible HAB Related Public Health Concern: (microcystin assumed > 20 µg/L based on surface scum analysis and historical observations, Water Temp > 18°C)
	Lower Concern Detected Area: 38 Sq Km.
	Higher Concern Possible HAB Related Water Quality Concern: (Chlorophyll > 20 µg/L, Water Temp > 18°C)
	Lower Concern Detected Area: 820 Sq Km.