

MTRI Developmental Harmful and Nuisance Algal Bloom Map

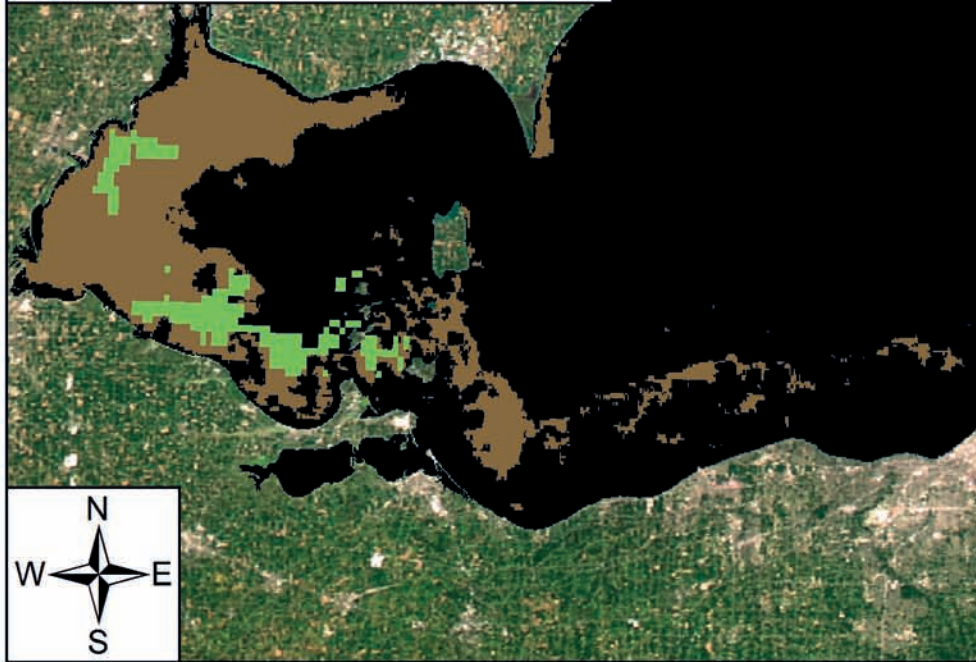
MichiganTech
Research Institute
www.mtri.org



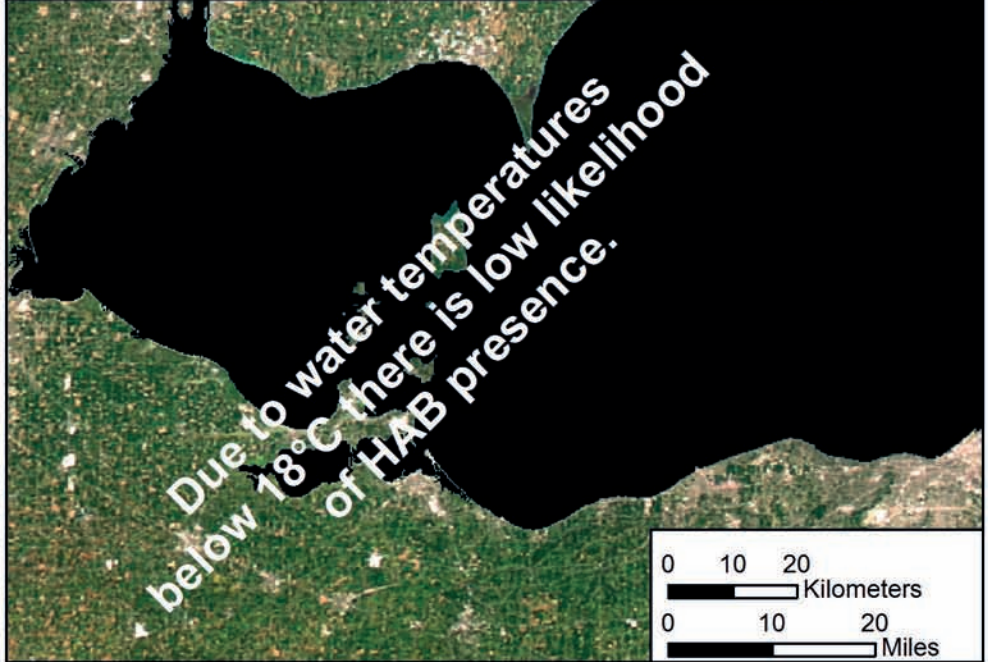
May 19, 2013
Lake Erie



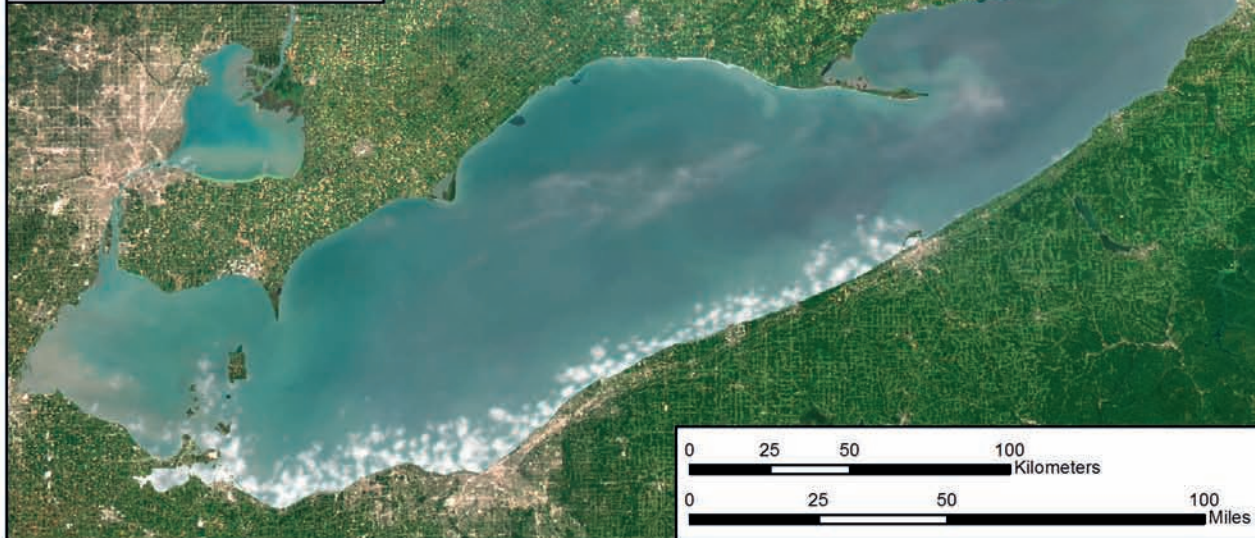
Algal and Sediment Extent Map



Water Quality & Public Health Concern Map



MODIS True Color



Area		
	Surface Algal Mat Area:	0 Sq Km.
	High Algal Concentration Area: (Chlorophyll > 20 µg/L)	440 Sq Km.
	Heavy Sediment Plume Area:	2,500 Sq Km.
	Higher Concern Possible HAB Related Public Health Concern: (microcystin assumed > 20 µg/L based on surface scum analysis and historical observations, Water Temp > 18°C)	
	Lower Concern Detected Area:	0 Sq Km.
	Higher Concern Possible HAB Related Water Quality Concern: (Chlorophyll > 20 µg/L, Water Temp > 18°C)	
	Lower Concern Detected Area:	0 Sq Km.