

MTRI Developmental Harmful and Nuisance Algal Bloom Map

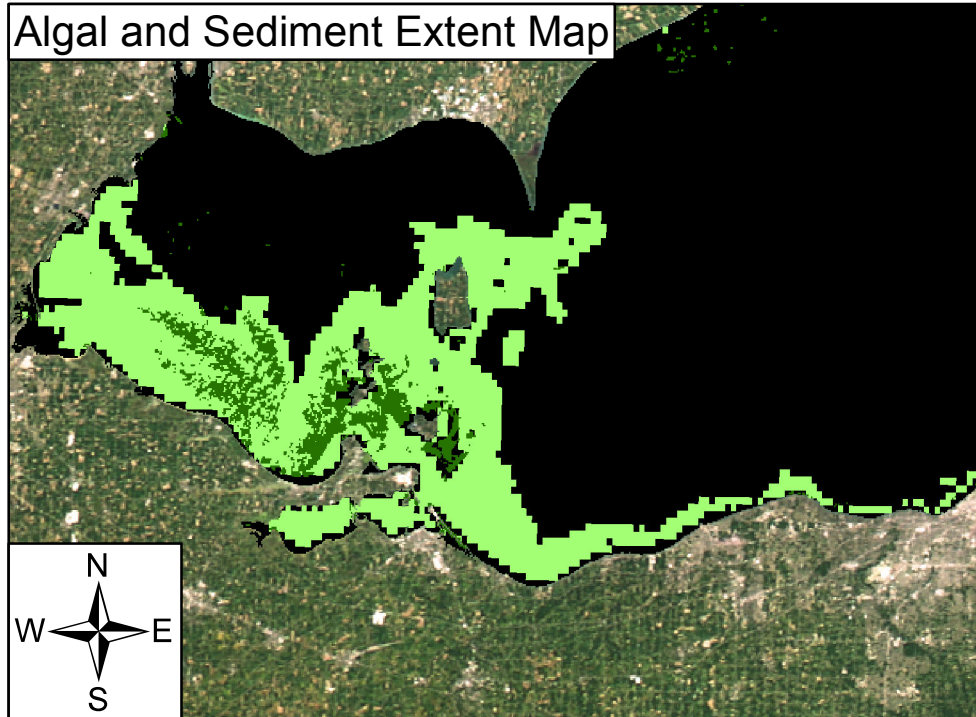
MichiganTech
Research Institute
www.mtri.org



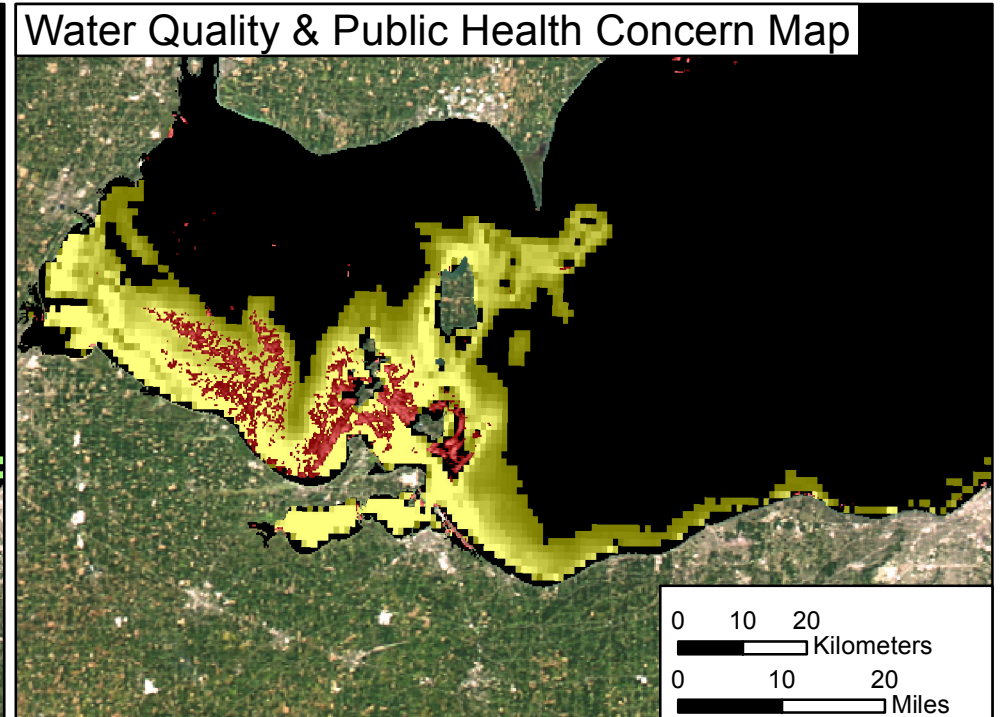
July 23, 2015
Lake Erie



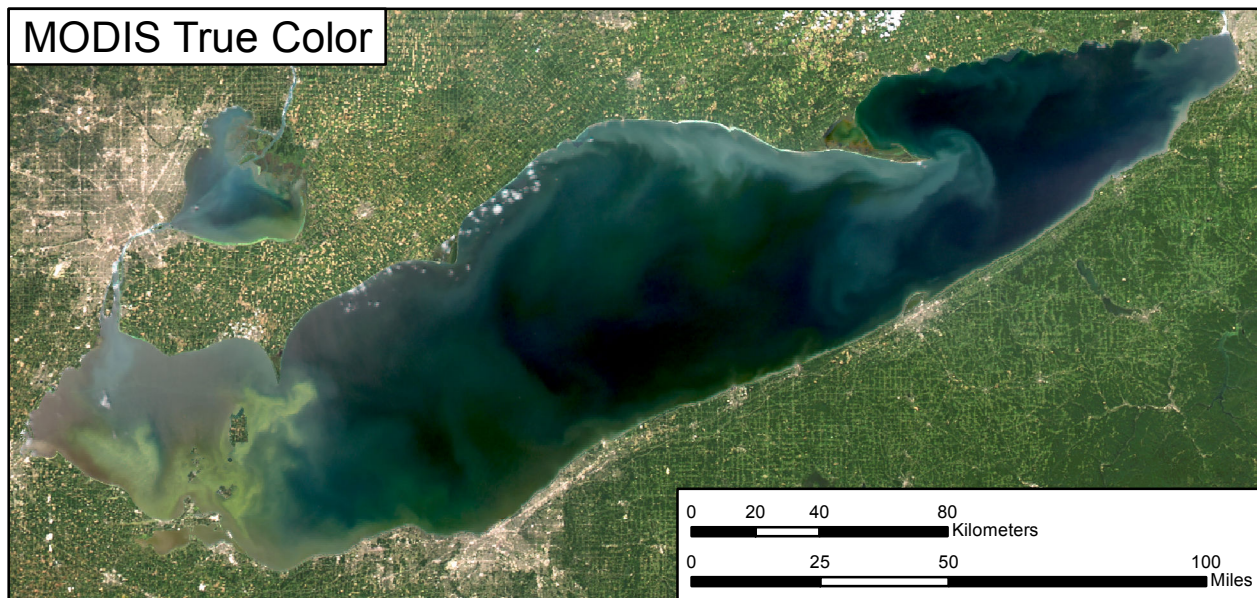
Algal and Sediment Extent Map









Water Quality & Public Health Concern Map



MODIS True Color



Area

	Surface Algal Mat Area:	239.06 Sq Km.
	High Algal Concentration Area:	1397.56 Sq Km.
	Higher Concern	Possible HAB Related Public Health Concern: (microcystin assumed > 20 µg/L based on surface scum analysis and historical observations, Water Temp > 18°C)
	Lower Concern	Detected Area: 239.06 Sq Km.
	Higher Concern	Possible HAB Related Water Quality Concern: (Chlorophyll > 20 µg/L, Water Temp > 18°C)
	Lower Concern	Detected Area: 1397.56 Sq Km.