

MTRI Developmental Harmful and Nuisance Algal Bloom Map

MichiganTech
Research Institute
www.mtri.org

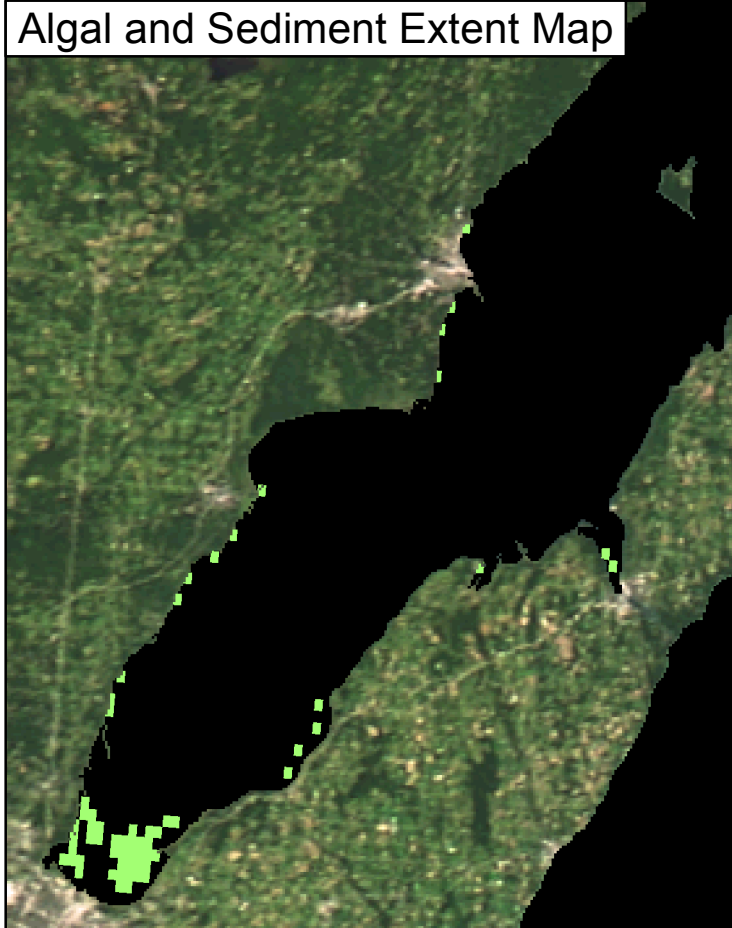
great lakes
observing system



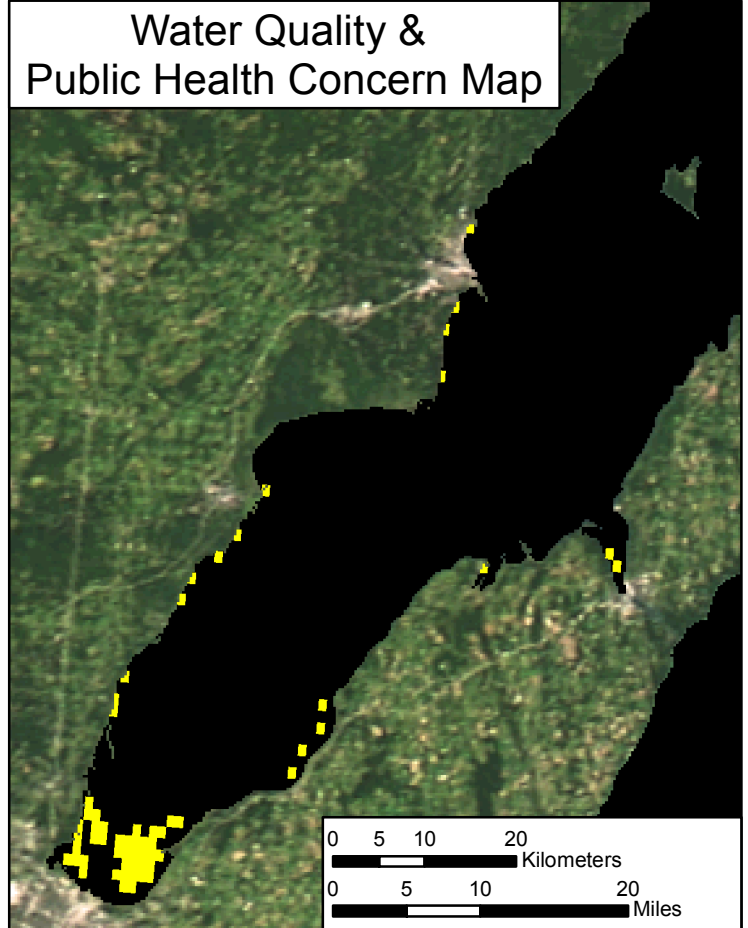
Green Bay
August 7, 2017



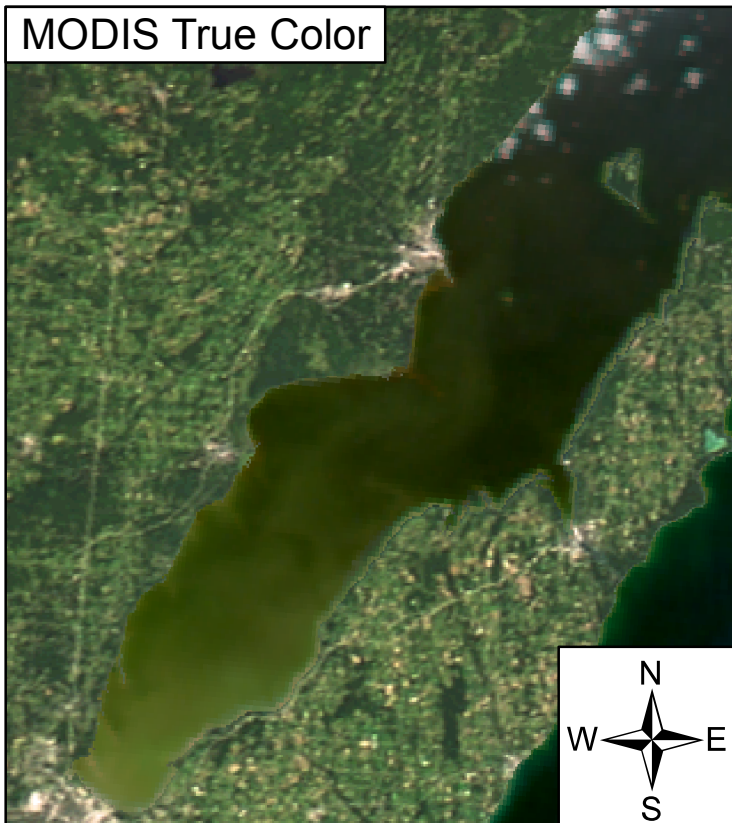
Algal and Sediment Extent Map



Water Quality & Public Health Concern Map





MODIS True Color



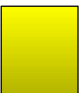
Area

 Surface Algal Mat N/A Sq. Km.

 High Algal Concentration:
(Chlorophyll > 20 µg/L) 63.75 Sq. Km.

 Higher Concern Possible HAB Related Public Health Concern: (microcystin assumed > 20 µg/L based on surface scum analysis and historical observations Water Temp > 18°C)

Lower Concern Detected Area: N/A Sq. Km.

 Higher Concern Possible HAB Related Water Quality Concern: (Chlorophyll > 20 µg/L Water Temp > 18°C)

Lower Concern Detected Area: 63.75 Sq. Km.