

MTRI Developmental Harmful and Nuisance Algal Bloom Map

MichiganTech
 Research Institute
www.mtri.org

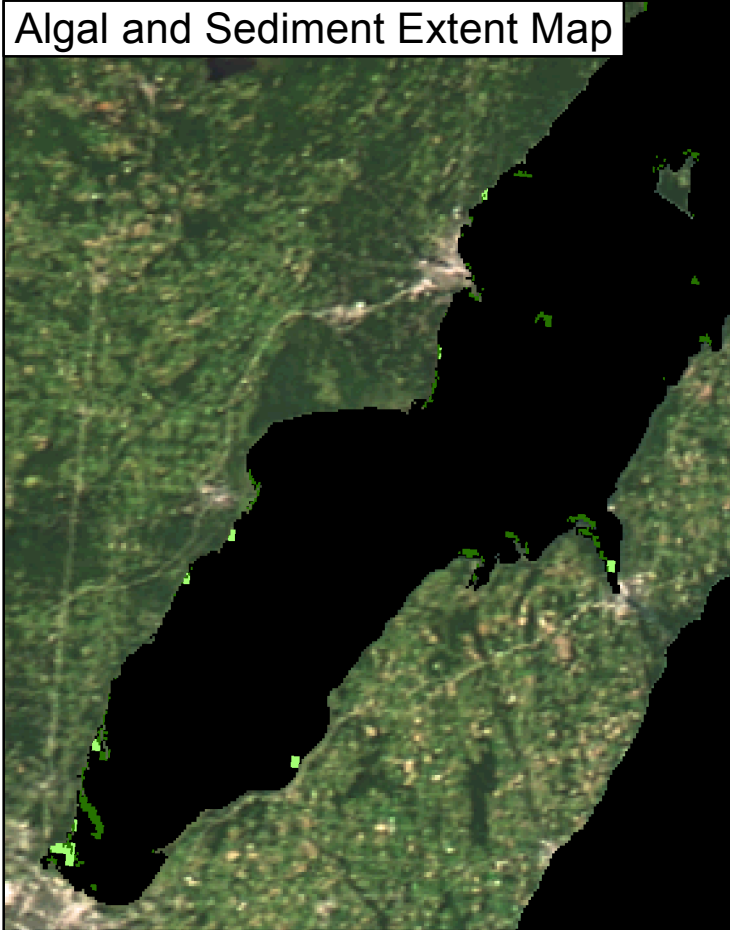
great lakes
 observing system



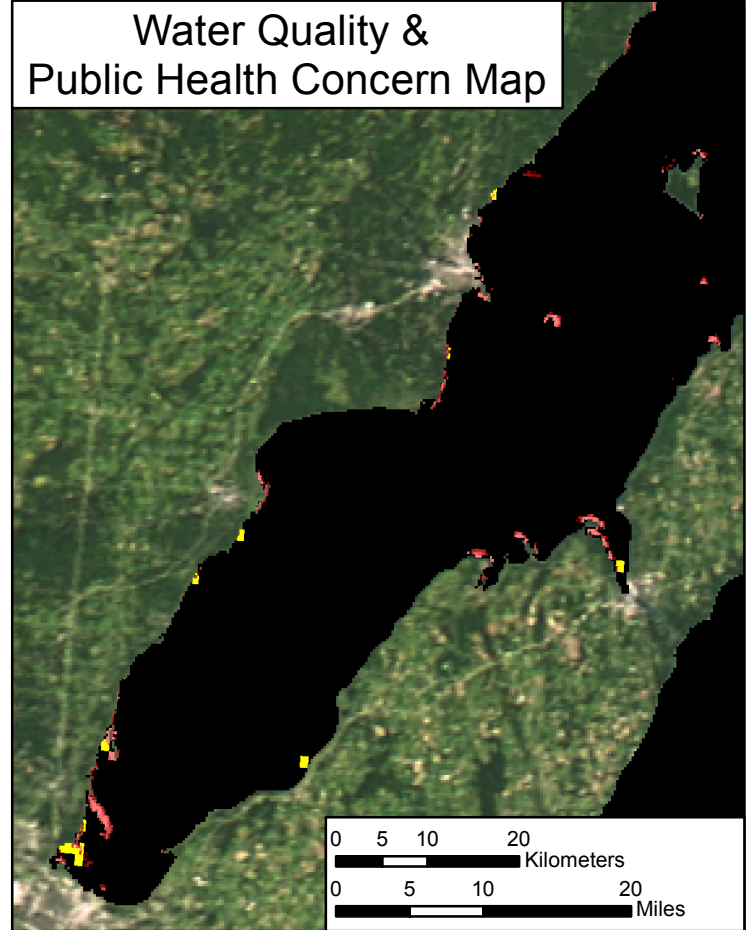
Green Bay
 July 31, 2017



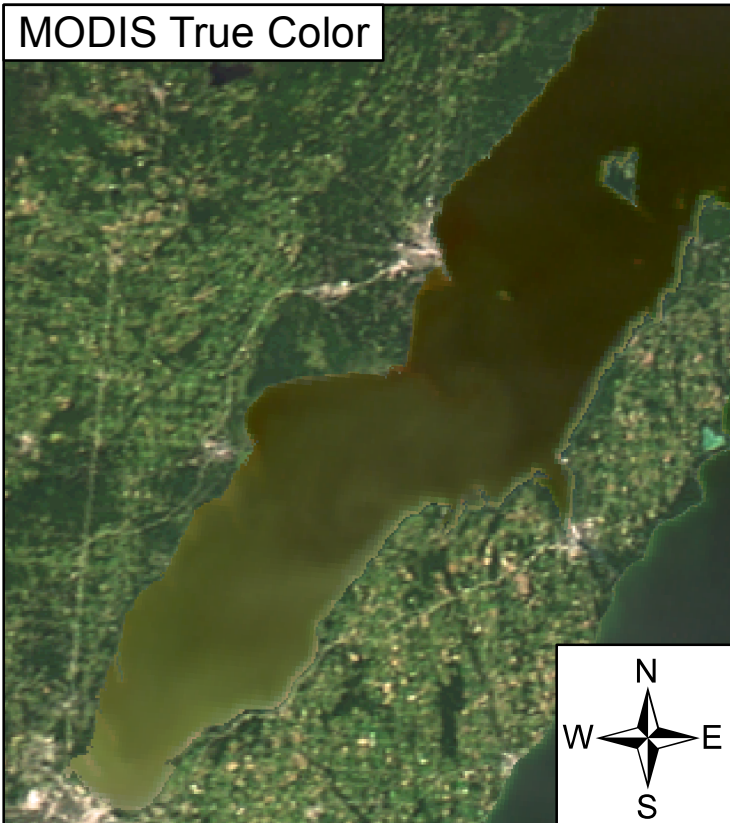
Algal and Sediment Extent Map



Water Quality & Public Health Concern Map



MODIS True Color



Area

- Surface Algal Mat 38.75 Sq. Km.
- High Algal Concentration: (Chlorophyll > 20 µg/L) 12.5 Sq. Km.
- Higher Concern Possible HAB Related Public Health Concern: (microcystin assumed > 20 µg/L based on surface scum analysis and historical observations Water Temp > 18°C)
 Lower Concern Detected Area: 38.75 Sq. Km.
- Higher Concern Possible HAB Related Water Quality Concern: (Chlorophyll > 20 µg/L Water Temp > 18°C)
 Lower Concern Detected Area: 12.5 Sq. Km.