

# MTRI Developmental Harmful and Nuisance Algal Bloom Map

**MichiganTech**  
 Research Institute  
[www.mtri.org](http://www.mtri.org)

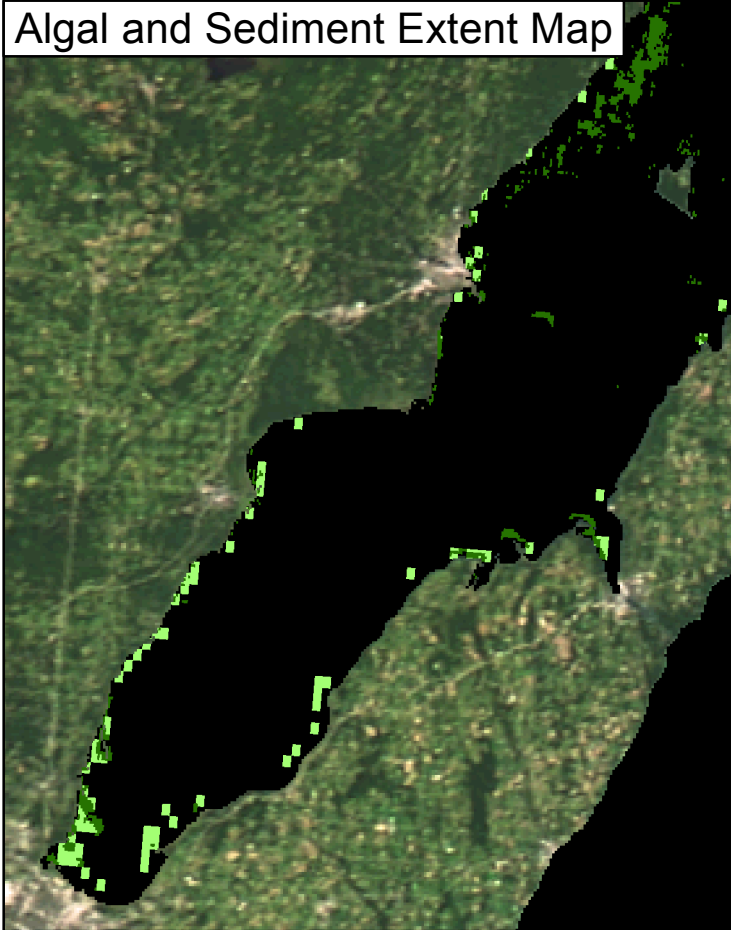
great lakes  
 observing system



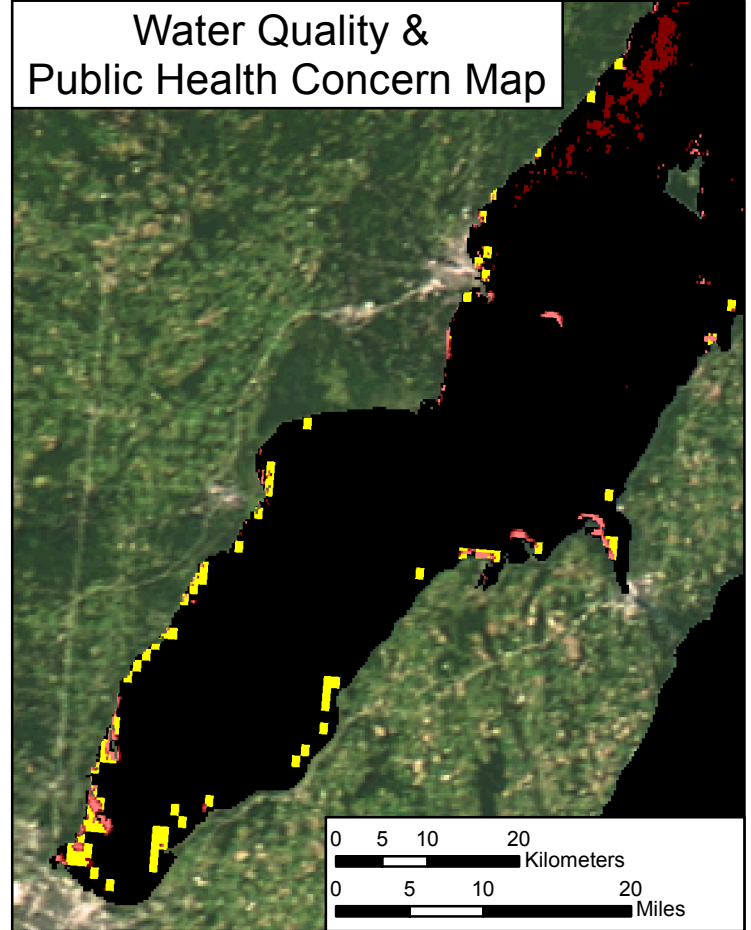
Green Bay  
 July 29, 2017



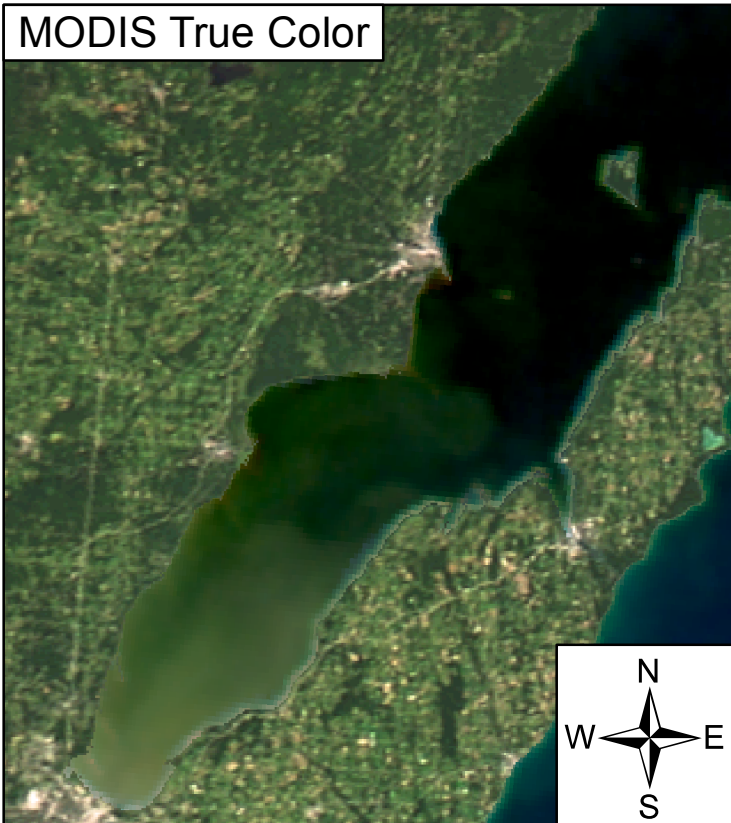
Algal and Sediment Extent Map









Water Quality & Public Health Concern Map



MODIS True Color



**Area**

	Surface Algal Mat	213.06 Sq. Km.
	High Algal Concentration: (Chlorophyll > 20 µg/L)	84.25 Sq. Km.
	Higher Concern	Possible HAB Related Public Health Concern: (microcystin assumed > 20 µg/L based on surface scum analysis and historical observations Water Temp > 18°C)
	Lower Concern	Detected Area: 213.06 Sq. Km.
	Higher Concern	Possible HAB Related Water Quality Concern: (Chlorophyll > 20 µg/L Water Temp > 18°C)
	Lower Concern	Detected Area: 84.25 Sq. Km.