

MTRI Developmental Harmful and Nuisance Algal Bloom Map

MichiganTech
 Research Institute
www.mtri.org

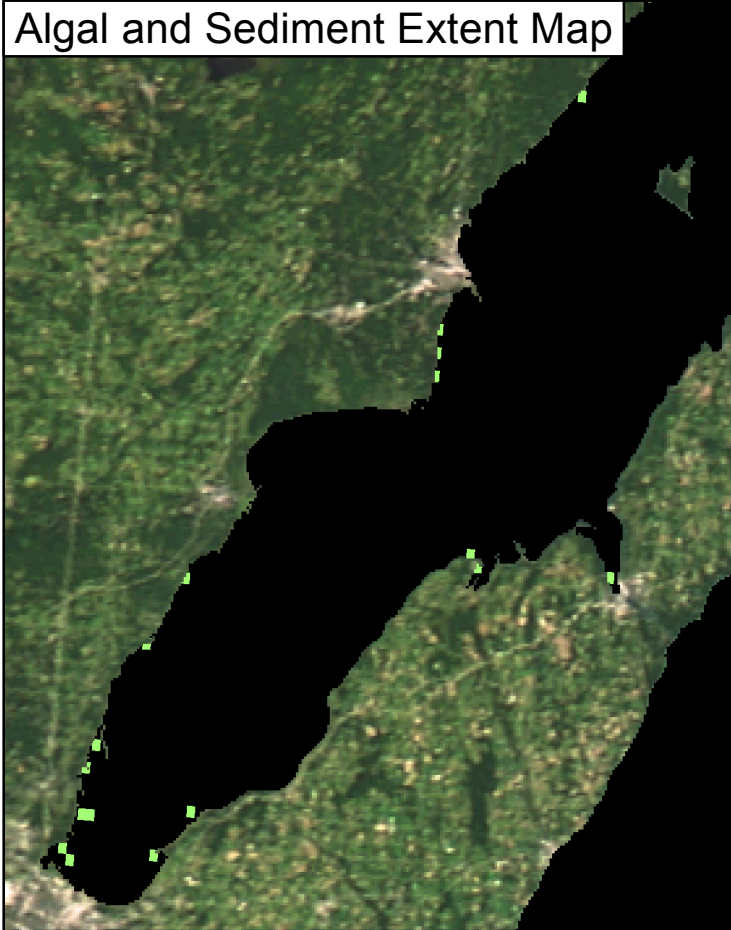
great lakes
 observing system



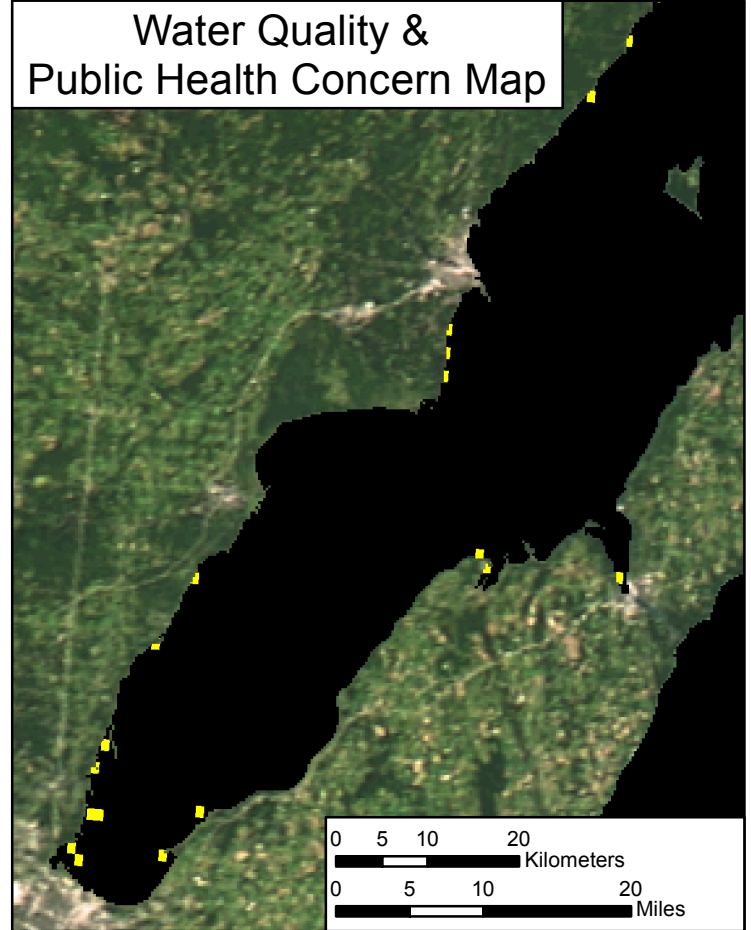
Green Bay
 July 17, 2017



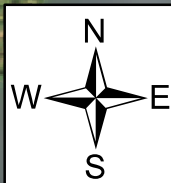
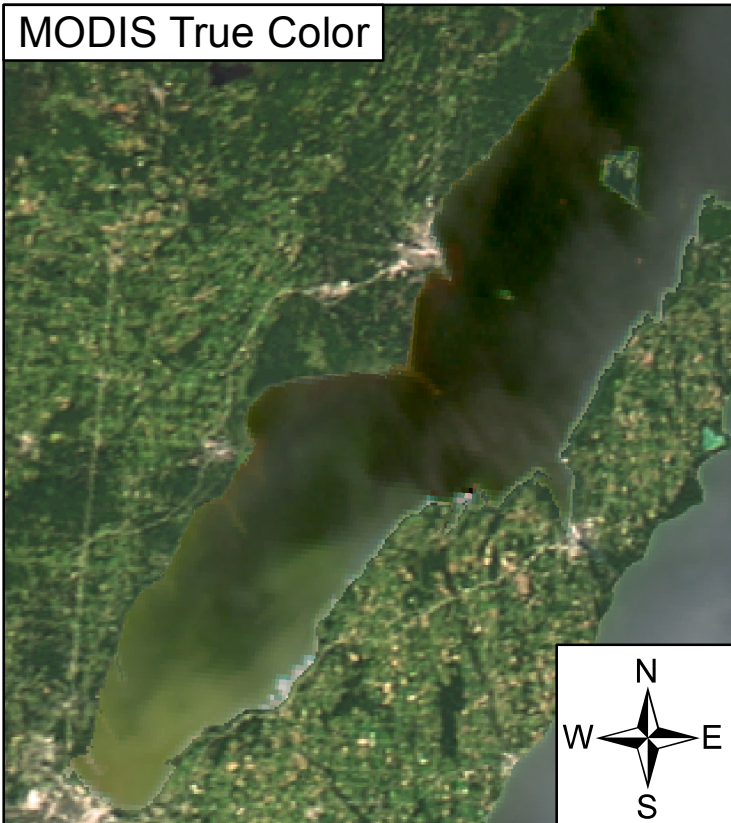
Algal and Sediment Extent Map



Water Quality & Public Health Concern Map



MODIS True Color



Area

Surface Algal Mat N/A Sq. Km.

High Algal Concentration:
 (Chlorophyll > 20 µg/L) 18.31 Sq. Km.

Higher Concern Possible HAB Related Public Health Concern: (microcystin assumed > 20 µg/L based on surface scum analysis and historical observations Water Temp > 18°C)
 Lower Concern Detected Area: N/A Sq. Km.

Higher Concern Possible HAB Related Water Quality Concern: (Chlorophyll > 20 µg/L Water Temp > 18°C)
 Lower Concern Detected Area: 18.31 Sq. Km.