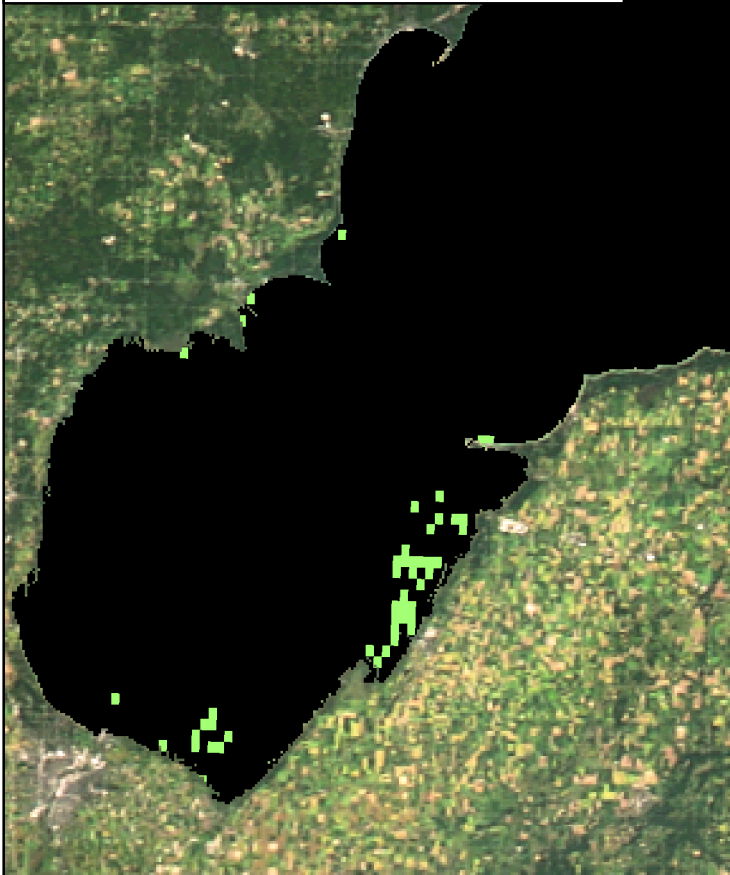
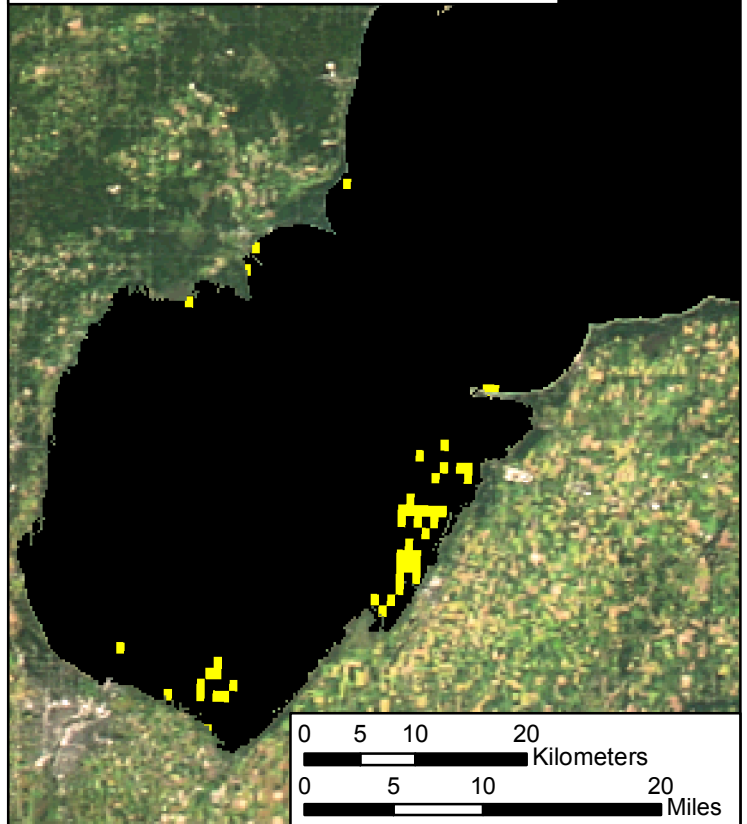


MTRI Developmental Harmful and Nuisance Algal Bloom Map

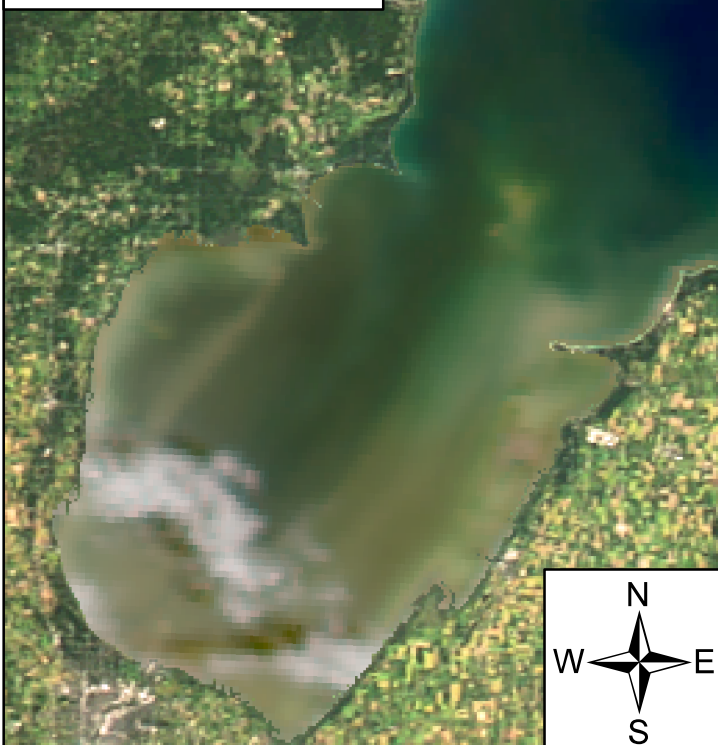
Algal and Sediment Extent Map




Water Quality & Public Health Concern Map





MODIS True Color



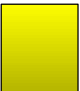
Area

 Surface Algal Mat N/A Sq Km.

 High Algal Concentration:
(Chlorophyll > 20 µg/L) 55.13 Sq. Km.

 Higher Concern Possible HAB Related Public Health Concern: (microcystin assumed > 20 µg/L based on surface scum analysis and historical observations Water Temp > 18°C)

Lower Concern Detected Area: N/A Sq Km.

 Higher Concern Possible HAB Related Water Quality Concern: (Chlorophyll > 20 µg/L Water Temp > 18°C)

Lower Concern Detected Area: 55.13 Sq. Km.