

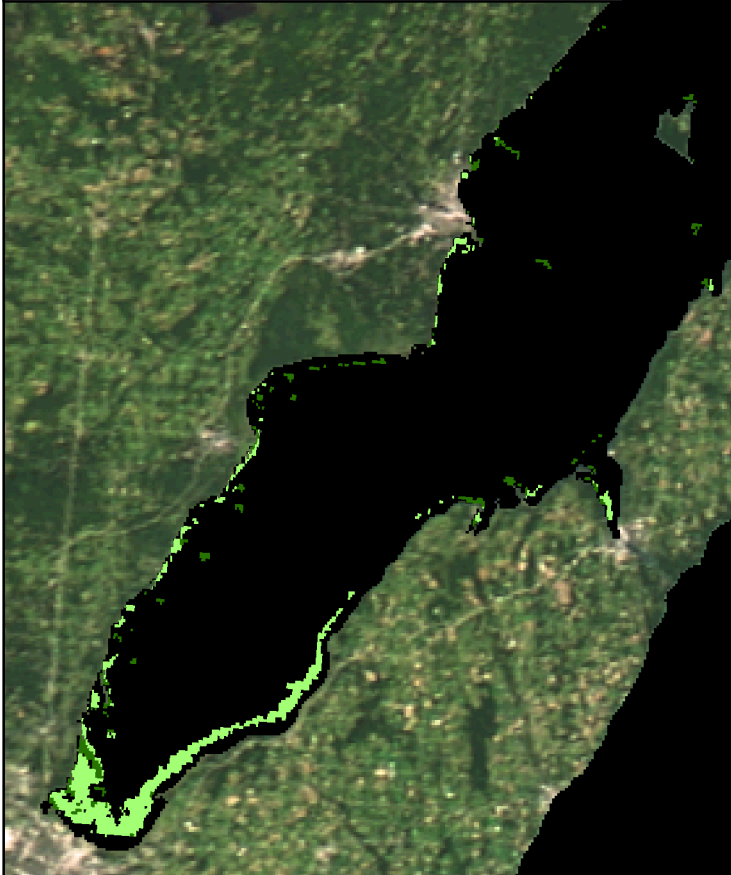
MTRI Developmental Harmful and Nuisance Algal Bloom Map



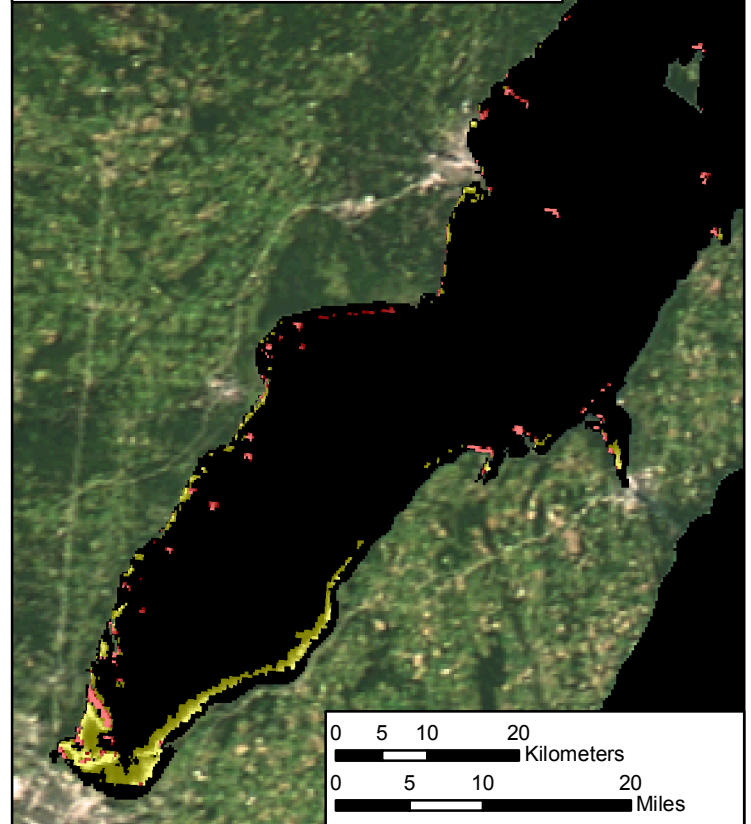
Green Bay
August 22, 2016



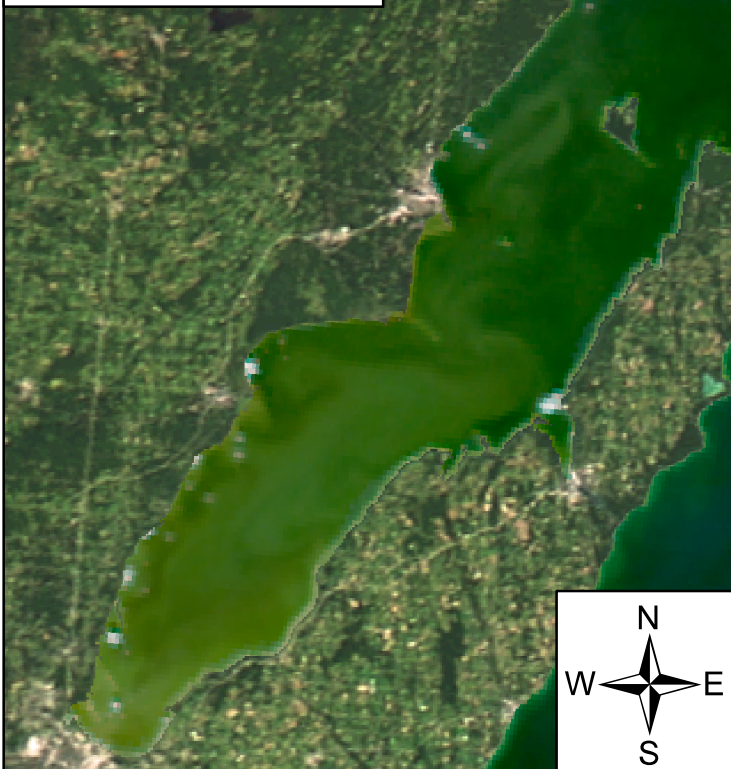
Algal and Sediment Extent Map




Water Quality & Public Health Concern Map





MODIS True Color

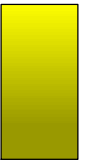


Area

 Surface Algal Mat 35.375 Sq. Km.

 High Algal Concentration: (Chlorophyll > 20 µg/L) 89 Sq. Km.

 Higher Concern Possible HAB Related Public Health Concern: (microcystin assumed > 20 µg/L based on surface scum analysis and historical observations Water Temp > 18°C)
Lower Concern Detected Area: 35.375 Sq Km.

 Higher Concern Possible HAB Related Water Quality Concern: (Chlorophyll > 20 µg/L Water Temp > 18°C)
Lower Concern Detected Area: 89 Sq Km.