

# MTRI Developmental Harmful and Nuisance Algal Bloom Map



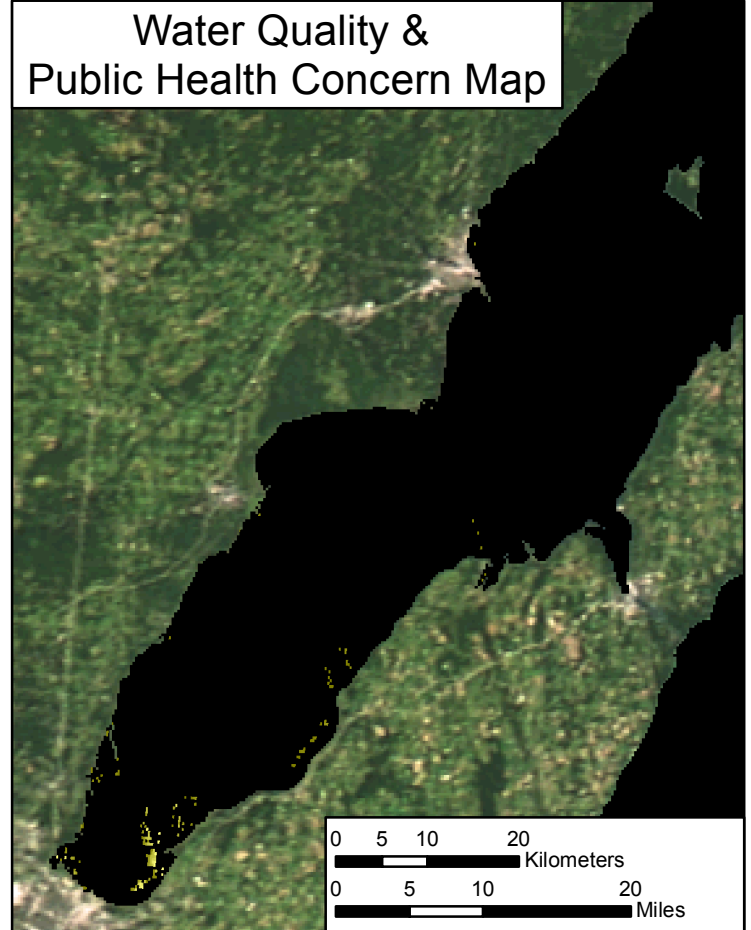
Green Bay  
July 22, 2016



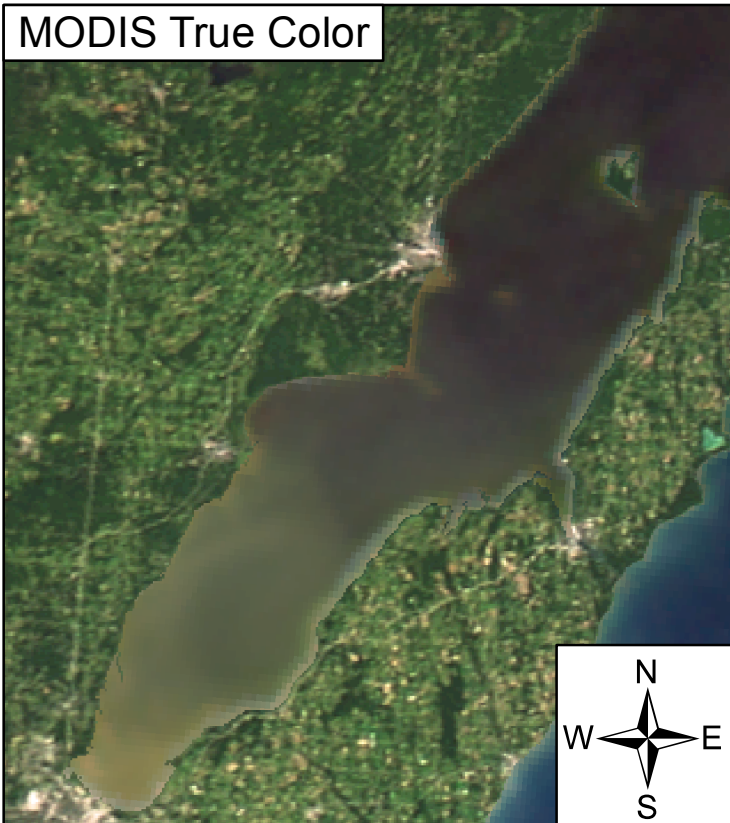
Algal and Sediment Extent Map







Water Quality & Public Health Concern Map



MODIS True Color



**Area**

	Surface Algal Mat	N/A Sq. Km.
	High Algal Concentration: (Chlorophyll > 20 µg/L)	12.0625 Sq. Km.
	Higher Concern Possible HAB Related Public Health Concern: (microcystin assumed > 20 µg/L based on surface scum analysis and historical observations Water Temp > 18°C)	Detected Area: N/A Sq. Km.
	Higher Concern Possible HAB Related Water Quality Concern: (Chlorophyll > 20 µg/L Water Temp > 18°C)	Detected Area: 12.0625 Sq. Km.
	Lower Concern	